

**PR48 Antibody (N-term)**  
**Purified Rabbit Polyclonal Antibody (Pab)**  
**Catalog # AP7772a**

**Specification**

---

**PR48 Antibody (N-term) - Product Information**

Application	WB,E
Primary Accession	<a href="#">Q9Y5P8</a>
Reactivity	Human
Host	Rabbit
Clonality	Polyclonal
Isotype	Rabbit IgG
Calculated MW	65061
Antigen Region	25-54

**PR48 Antibody (N-term) - Additional Information**

**Gene ID** 28227

**Other Names**

Serine/threonine-protein phosphatase 2A regulatory subunit B'' subunit beta, PP2A subunit B isoform PR48, Protein phosphatase 2A 48 kDa regulatory subunit, PPP2R3B, PPP2R3L

**Target/Specificity**

This PR48 antibody is generated from rabbits immunized with a KLH conjugated synthetic peptide between 25-54 amino acids from the N-terminal region of human PR48.

**Dilution**

WB~~1:1000

**Format**

Purified polyclonal antibody supplied in PBS with 0.09% (W/V) sodium azide. This antibody is prepared by Saturated Ammonium Sulfate (SAS) precipitation followed by dialysis against PBS.

**Storage**

Maintain refrigerated at 2-8°C for up to 2 weeks. For long term storage store at -20°C in small aliquots to prevent freeze-thaw cycles.

**Precautions**

PR48 Antibody (N-term) is for research use only and not for use in diagnostic or therapeutic procedures.

**PR48 Antibody (N-term) - Protein Information**

**Name** PPP2R3B

**Synonyms** PPP2R3L

**Function** The B regulatory subunit might modulate substrate selectivity and catalytic activity, and also might direct the localization of the catalytic enzyme to a particular subcellular compartment.

**Cellular Location**

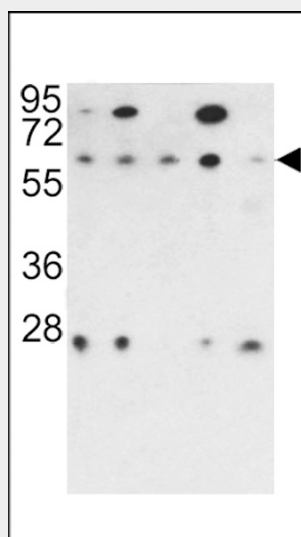
Nucleus.

**PR48 Antibody (N-term) - Protocols**

Provided below are standard protocols that you may find useful for product applications.

- [Western Blot](#)
- [Blocking Peptides](#)
- [Dot Blot](#)
- [Immunohistochemistry](#)
- [Immunofluorescence](#)
- [Immunoprecipitation](#)
- [Flow Cytometry](#)
- [Cell Culture](#)

**PR48 Antibody (N-term) - Images**



Western blot analysis of PR48 antibody (N-term) (Cat. #AP7772a) in 293, NCI-H460, Hela, K562 and HL60 cell line lysates (35ug/lane). PR48 (arrow) was detected using the purified Pab.

**PR48 Antibody (N-term) - Background**

Protein phosphatase 2 (formerly named type 2A) is one of the four major Ser/Thr phosphatases and is implicated in the negative control of cell growth and division. Protein phosphatase 2 holoenzymes are heterotrimeric proteins composed of a structural subunit A, a catalytic subunit C, and a regulatory subunit B. These different regulatory subunits confer distinct enzymatic specificities and intracellular localizations to the holoenzyme. This protein belongs to the B'' family. The B'' family has been further divided into subfamilies. This protein belongs to the beta subfamily of regulatory subunit B''.

**PR48 Antibody (N-term) - References**

Stevens, I., Eur. J. Biochem. 270 (2), 376-387 (2003)

Yokoyama,N., Oncogene 20 (42), 6057-6065 (2001)

Yan,Z., Mol. Cell. Biol. 20 (3), 1021-1029 (2000)