

**BRAF Antibody (T400)**  
**Affinity Purified Rabbit Polyclonal Antibody (Pab)**  
**Catalog # AP7810E****Specification**

---

**BRAF Antibody (T400) - Product Information**

Application	WB, IHC-P,E
Primary Accession	<a href="#">P15056</a>
Other Accession	<a href="#">P28028</a>
Reactivity	Human, Mouse
Predicted	Mouse
Host	Rabbit
Clonality	Polyclonal
Isotype	Rabbit IgG
Antigen Region	379-408

**BRAF Antibody (T400) - Additional Information****Gene ID** 673**Other Names**

Serine/threonine-protein kinase B-raf, Proto-oncogene B-Raf, p94, v-Raf murine sarcoma viral oncogene homolog B1, BRAF, BRAF1, RAFB1

**Target/Specificity**

This BRAF antibody is generated from rabbits immunized with a KLH conjugated synthetic peptide between 379-408 amino acids from human BRAF.

**Dilution**

WB~~1:500

IHC-P~~1:100

**Format**

Purified polyclonal antibody supplied in PBS with 0.09% (W/V) sodium azide. This antibody is purified through a protein A column, followed by peptide affinity purification.

**Storage**

Maintain refrigerated at 2-8°C for up to 2 weeks. For long term storage store at -20°C in small aliquots to prevent freeze-thaw cycles.

**Precautions**

BRAF Antibody (T400) is for research use only and not for use in diagnostic or therapeutic procedures.

**BRAF Antibody (T400) - Protein Information****Name** BRAF ([HGNC:1097](#))

**Synonyms** BRAF1, RAFB1

**Function** Protein kinase involved in the transduction of mitogenic signals from the cell membrane to the nucleus (Probable). Phosphorylates MAP2K1, and thereby activates the MAP kinase signal transduction pathway (PubMed:[21441910](#), PubMed:[29433126](#)). Phosphorylates PFKFB2 (PubMed:[36402789](#)). May play a role in the postsynaptic responses of hippocampal neurons (PubMed:[1508179](#)).

**Cellular Location**

Nucleus. Cytoplasm. Cell membrane. Note=Colocalizes with RGS14 and RAF1 in both the cytoplasm and membranes.

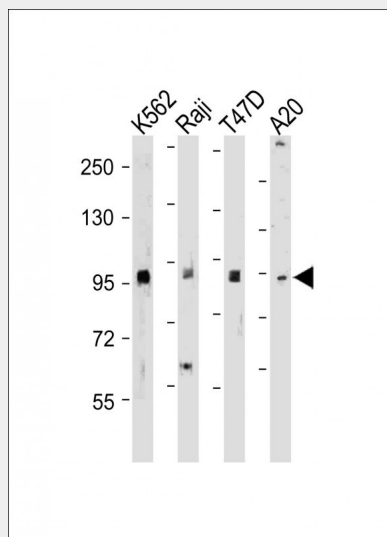
**Tissue Location**

Brain and testis.

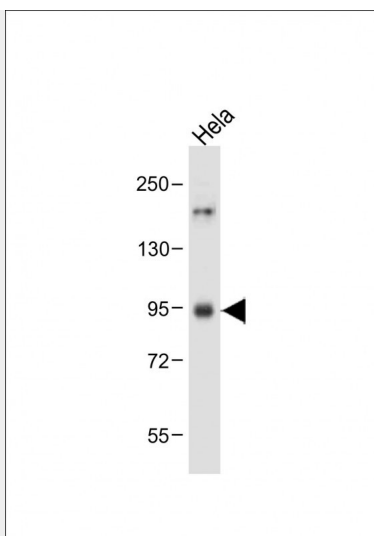
**BRAF Antibody (T400) - Protocols**

Provided below are standard protocols that you may find useful for product applications.

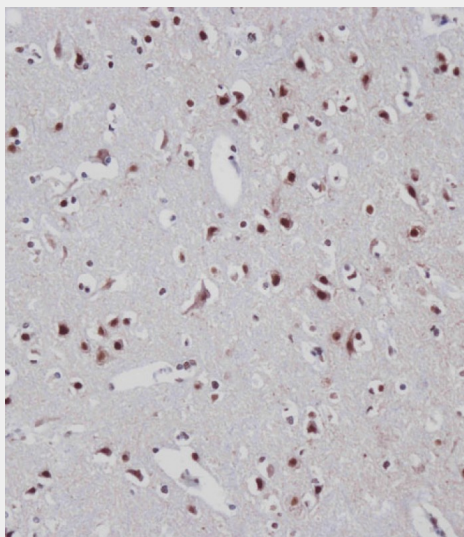
- [Western Blot](#)
- [Blocking Peptides](#)
- [Dot Blot](#)
- [Immunohistochemistry](#)
- [Immunofluorescence](#)
- [Immunoprecipitation](#)
- [Flow Cytometry](#)
- [Cell Culture](#)

**BRAF Antibody (T400) - Images**

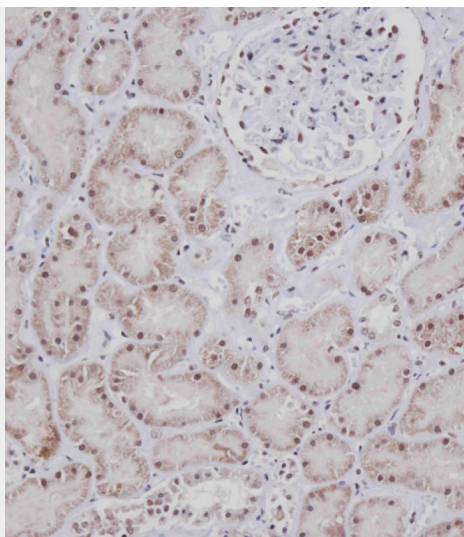
All lanes : Anti-BRAF Antibody (T400) at 1:500-2000 dilution Lane 1: K562 whole cell lysate Lane 2: Raji whole cell lysate Lane 3: T47D whole cell lysate Lane 4: A20 whole cell lysate Lysates/proteins at 20 µg per lane. Secondary Goat Anti-Rabbit IgG, (H+L), Peroxidase conjugated at 1/10000 dilution. Predicted band size : 84 kDa Blocking/Dilution buffer: 5% NFDM/TBST.



Anti-BRAF Antibody (T400) at 1:500 dilution + HeLa whole cell lysate Lysates/proteins at 20  $\mu$ g per lane. Secondary Goat Anti-Rabbit IgG, (H+L), Peroxidase conjugated at 1/10000 dilution. Predicted band size : 84 kDa Blocking/Dilution buffer: 5% NFDM/TBST.



Immunohistochemical analysis of AP7810E on paraffin-embedded Human brain tissue. Tissue was fixed with formaldehyde at room temperature. Heat induced epitope retrieval was performed by EDTA buffer (pH9.0). Samples were incubated with primary antibody(1:100) for 1 hour at room temperature. Undiluted CRF Anti-Polyvalent HRP Polymer antibody was used as the secondary antibody.



Immunohistochemical analysis of AP7810E on paraffin-embedded Human kidney tissue. Tissue was fixed with formaldehyde at room temperature. Heat induced epitope retrieval was performed by EDTA buffer (pH9. 0). Samples were incubated with primary antibody(1:100) for 1 hour at room temperature. Undiluted CRF Anti-Polyvalent HRP Polymer antibody was used as the secondary antibody.

#### **BRAF Antibody (T400) - Background**

BRAF, a member of the RAF subfamily of Ser/Thr protein kinases, is involved in the transduction of mitogenic signals from the cell membrane to the nucleus. It may play a role in the postsynaptic responses of hippocampal neurons. This cytoplasmic protein is expressed in brain and testis. Defects in BRAF are involved in a wide range of cancers including lung cancer and non-Hodgkin lymphoma (NHL). This protein contains 1 zinc-dependent phorbol-ester and DAG binding domain.

#### **BRAF Antibody (T400) - References**

Hingorani, S.R., et al., Cancer Res. 63(17):5198-5202 (2003).  
Lee, J.W., et al., Br. J. Cancer 89(10):1958-1960 (2003).  
Davies, H., et al., Nature 417(6892):949-954 (2002).  
Naoki, K., et al., Cancer Res. 62(23):7001-7003 (2002).  
Stephens, R.M., et al., Mol. Cell. Biol. 12(9):3733-3742 (1992).