

MUC20 Antibody (N-term)
Affinity Purified Rabbit Polyclonal Antibody (Pab)
Catalog # AP7830a

Specification

MUC20 Antibody (N-term) - Product Information

Application	IF, WB,E
Primary Accession	Q8N307
Other Accession	Q86ST8
Reactivity	Human
Host	Rabbit
Clonality	Polyclonal
Isotype	Rabbit IgG
Antigen Region	61-90

MUC20 Antibody (N-term) - Additional Information

Gene ID 200958

Other Names

Mucin-20, MUC-20, MUC20, KIAA1359

Target/Specificity

This MUC20 antibody is generated from rabbits immunized with a KLH conjugated synthetic peptide between 61-90 amino acids from the N-terminal region of human MUC20.

Dilution

IF~~1:10~50

WB~~1:2000

Format

Purified polyclonal antibody supplied in PBS with 0.09% (W/V) sodium azide. This antibody is purified through a protein A column, followed by peptide affinity purification.

Storage

Maintain refrigerated at 2-8°C for up to 2 weeks. For long term storage store at -20°C in small aliquots to prevent freeze-thaw cycles.

Precautions

MUC20 Antibody (N-term) is for research use only and not for use in diagnostic or therapeutic procedures.

MUC20 Antibody (N-term) - Protein Information

Name MUC20

Synonyms KIAA1359

Function May regulate MET signaling cascade. Seems to decrease hepatocyte growth factor (HGF)-induced transient MAPK activation. Blocks GRB2 recruitment to MET thus suppressing the GRB2-RAS pathway. Inhibits HGF-induced proliferation of MMP1 and MMP9 expression.

Cellular Location

Secreted. Apical cell membrane. Basolateral cell membrane. Cell projection, microvillus membrane

Tissue Location

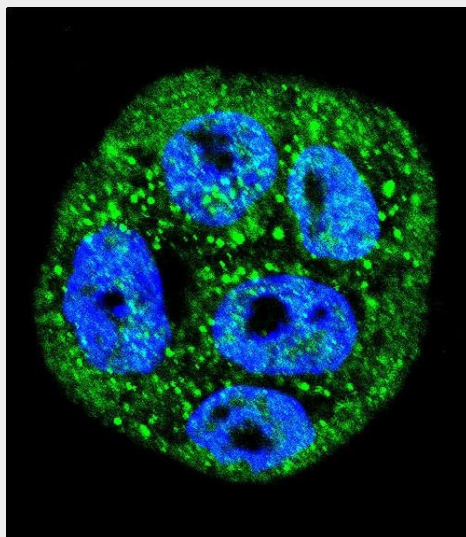
Highly expressed in kidney, moderately in placenta, lung, prostate, liver, and digestive system. In the kidney, localized in the proximal tubules but not in the glomerulus or distal tubules Detected in most of the male urogenital tract epithelia, with the exception of epididymis.

MUC20 Antibody (N-term) - Protocols

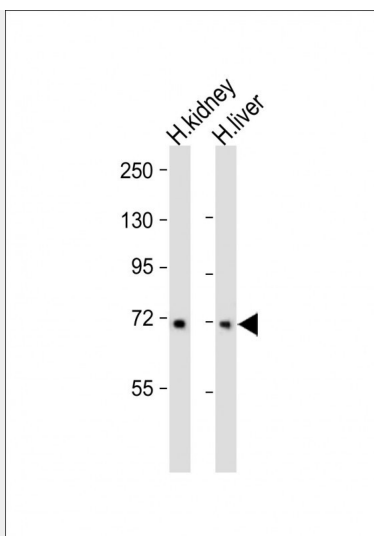
Provided below are standard protocols that you may find useful for product applications.

- [Western Blot](#)
- [Blocking Peptides](#)
- [Dot Blot](#)
- [Immunohistochemistry](#)
- [Immunofluorescence](#)
- [Immunoprecipitation](#)
- [Flow Cytometry](#)
- [Cell Culture](#)

MUC20 Antibody (N-term) - Images



Confocal immunofluorescent analysis of MUC20 Antibody (N-term)(Cat#AP7830a) with WiDr cell followed by Alexa Fluor 488-conjugated goat anti-rabbit IgG (green). DAPI was used to stain the cell nuclear (blue).



All lanes : Anti-MUC20 Antibody (N-term) at 1:2000 dilution Lane 1: Human kidney whole lysate
Lane 2: Human liver whole lysate Lysates/proteins at 20 µg per lane. Secondary Goat Anti-Rabbit IgG, (H+L), Peroxidase conjugated at 1/10000 dilution. Predicted band size : 72 kDa
Blocking/Dilution buffer: 5% NFDM/TBST.

MUC20 Antibody (N-term) - Background

This gene encodes a member of the mucin protein family. Mucins are high molecular weight glycoproteins secreted by many epithelial tissues to form an insoluble mucous barrier. The shorter isoform expressed by this gene is localized to the plasma membrane, whereas the longer isoform might be secreted. The C terminus of this protein associates with the multifunctional docking site of the met proto-oncogene and suppresses activation of some downstream met signaling cascades. The protein features a tandem repeat domain that varies between 2 and 6 copies in different individuals. Multiple transcript variants encoding different isoforms have been found for this gene.

MUC20 Antibody (N-term) - References

Li,G., Am. J. Nephrol. 26 (1), 43-49 (2006)
Suzuki,Y., Genome Res. 14 (9), 1711-1718 (2004)
Higuchi,T., Mol. Cell. Biol. 24 (17), 7456-7468 (2004)
Higuchi,T., J. Biol. Chem. 279 (3), 1968-1979 (2004)

MUC20 Antibody (N-term) - Citations

- [Comprehensive assessment of genetic variants within TCF4 in Fuchs' endothelial corneal dystrophy.](#)
- [Expression analysis of the transmembrane mucin MUC20 in human corneal and conjunctival epithelia.](#)