

**SARS2 Antibody (Center)**  
**Purified Rabbit Polyclonal Antibody (Pab)**  
**Catalog # AP7837c****Specification**

---

**SARS2 Antibody (Center) - Product Information**

Application	WB, IHC-P,E
Primary Accession	<a href="#">Q9NP81</a>
Reactivity	Human
Host	Rabbit
Clonality	Polyclonal
Isotype	Rabbit IgG
Calculated MW	58283
Antigen Region	315-344

**SARS2 Antibody (Center) - Additional Information****Gene ID** 54938**Other Names**

Serine--tRNA ligase, mitochondrial, SerRSmt, Seryl-tRNA synthetase, SerRS, Seryl-tRNA(Ser/Sec) synthetase, SARS2, SARSM

**Target/Specificity**

This SARS2 antibody is generated from rabbits immunized with a KLH conjugated synthetic peptide between 315-344 amino acids from the Central region of human SARS2.

**Dilution**

WB~~1:1000

IHC-P~~1:10~50

**Format**

Purified polyclonal antibody supplied in PBS with 0.09% (W/V) sodium azide. This antibody is prepared by Saturated Ammonium Sulfate (SAS) precipitation followed by dialysis against PBS.

**Storage**

Maintain refrigerated at 2-8°C for up to 2 weeks. For long term storage store at -20°C in small aliquots to prevent freeze-thaw cycles.

**Precautions**

SARS2 Antibody (Center) is for research use only and not for use in diagnostic or therapeutic procedures.

**SARS2 Antibody (Center) - Protein Information****Name** SARS2**Synonyms** SARSM

**Function** Catalyzes the attachment of serine to tRNA(Ser). Is also probably able to aminoacylate tRNA(Sec) with serine, to form the misacylated tRNA L-seryl-tRNA(Sec), which will be further converted into selenocysteiny-tRNA(Sec).

**Cellular Location**

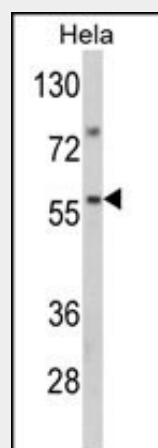
Mitochondrion matrix {ECO:0000250|UniProtKB:Q9N0F3}

**SARS2 Antibody (Center) - Protocols**

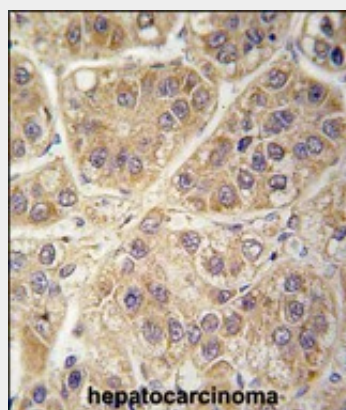
Provided below are standard protocols that you may find useful for product applications.

- [Western Blot](#)
- [Blocking Peptides](#)
- [Dot Blot](#)
- [Immunohistochemistry](#)
- [Immunofluorescence](#)
- [Immunoprecipitation](#)
- [Flow Cytometry](#)
- [Cell Culture](#)

**SARS2 Antibody (Center) - Images**



Western blot analysis of SARS2 Antibody (Center) (Cat. #AP7837c) in HeLa cell line lysates (35ug/lane). SARS2 (arrow) was detected using the purified Pab.



Formalin-fixed and paraffin-embedded human hepatocarcinoma tissue reacted with SARS2

antibody (Center) (Cat.#AP7837c), which was peroxidase-conjugated to the secondary antibody, followed by DAB staining. This data demonstrates the use of this antibody for immunohistochemistry; clinical relevance has not been evaluated.

#### **SARS2 Antibody (Center) - Background**

SARS2 catalyzes the attachment of serine to tRNA(Ser). It is also able to aminoacylate tRNA(Sec) with serine, to form the misacylated tRNA L-seryl-tRNA(Sec), which will be further converted into selenocysteinyI-tRNA(Sec).

#### **SARS2 Antibody (Center) - References**

- Muller,T., Acta Neuropathol. 110 (4), 426-430 (2005)  
Gibbons,W.J. Jr., Biochem. Biophys. Res. Commun. 317 (3), 774-778 (2004)  
Yokogawa,T., J. Biol. Chem. 275 (26), 19913-19920 (2000)