

**ALDH1L1 Antibody (C-term)**  
**Purified Rabbit Polyclonal Antibody (Pab)**  
**Catalog # AP7848B****Specification**

---

**ALDH1L1 Antibody (C-term) - Product Information**

Application	WB, IHC-P,E
Primary Accession	<a href="#">O75891</a>
Reactivity	Human, Mouse
Host	Rabbit
Clonality	Polyclonal
Isotype	Rabbit IgG
Calculated MW	98829
Antigen Region	717-746

**ALDH1L1 Antibody (C-term) - Additional Information****Gene ID** 10840**Other Names**

Cytosolic 10-formyltetrahydrofolate dehydrogenase, 10-FTHFDH, FDH, Aldehyde dehydrogenase family 1 member L1, ALDH1L1, FTHFD

**Target/Specificity**

This ALDH1L1 antibody is generated from rabbits immunized with a KLH conjugated synthetic peptide between 717-746 amino acids from the C-terminal region of human ALDH1L1.

**Dilution**

WB~~1:1000

IHC-P~~1:10~50

**Format**

Purified polyclonal antibody supplied in PBS with 0.09% (W/V) sodium azide. This antibody is prepared by Saturated Ammonium Sulfate (SAS) precipitation followed by dialysis against PBS.

**Storage**

Maintain refrigerated at 2-8°C for up to 2 weeks. For long term storage store at -20°C in small aliquots to prevent freeze-thaw cycles.

**Precautions**

ALDH1L1 Antibody (C-term) is for research use only and not for use in diagnostic or therapeutic procedures.

**ALDH1L1 Antibody (C-term) - Protein Information****Name** ALDH1L1 ([HGNC:3978](#))**Synonyms** FTHFD

**Function** Cytosolic 10-formyltetrahydrofolate dehydrogenase that catalyzes the NADP(+)-dependent conversion of 10-formyltetrahydrofolate to tetrahydrofolate and carbon dioxide (PubMed:[19933275](#), PubMed:[21238436](#)). May also have an NADP(+)-dependent aldehyde dehydrogenase activity towards formaldehyde, acetaldehyde, propionaldehyde, and benzaldehyde (By similarity).

**Cellular Location**

Cytoplasm, cytosol.

**Tissue Location**

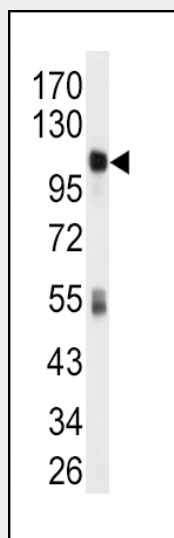
Highly expressed in liver, pancreas and kidney.

**ALDH1L1 Antibody (C-term) - Protocols**

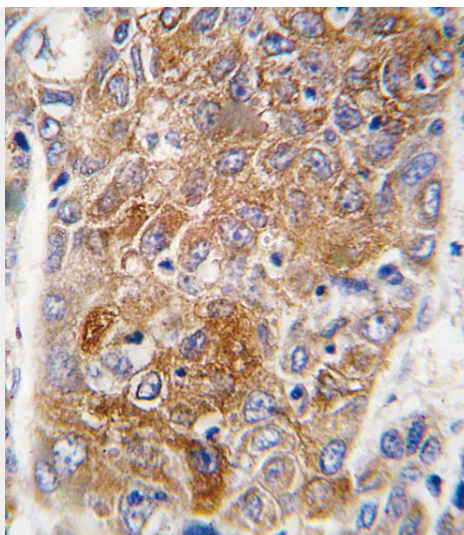
Provided below are standard protocols that you may find useful for product applications.

- [Western Blot](#)
- [Blocking Peptides](#)
- [Dot Blot](#)
- [Immunohistochemistry](#)
- [Immunofluorescence](#)
- [Immunoprecipitation](#)
- [Flow Cytometry](#)
- [Cell Culture](#)

**ALDH1L1 Antibody (C-term) - Images**



Western blot analysis of anti-ALDH1L1 Antibody (C-term) (Cat.#AP7848b) in mouse liver tissue lysates (35ug/lane). ALDH1L1 (arrow) was detected using the purified Pab.



Formalin-fixed and paraffin-embedded human hepatocarcinoma tissue reacted with ALDH1L1 antibody (C-term), which was peroxidase-conjugated to the secondary antibody, followed by DAB staining. This data demonstrates the use of this antibody for immunohistochemistry; clinical relevance has not been evaluated.

#### **ALDH1L1 Antibody (C-term) - Background**

ALDH1L1 catalyzes the conversion of 10-formyltetrahydrofolate, NADP, and water to tetrahydrofolate, NADPH, and carbon dioxide. The encoded protein belongs to the aldehyde dehydrogenase family and is responsible for formate oxidation in vivo. Deficiencies in this gene can result in an accumulation of formate and subsequent methanol poisoning.

#### **ALDH1L1 Antibody (C-term) - References**

Hosgood, H.D. III, Carcinogenesis 29 (10), 1938-1943 (2008)  
Lee, K.M., Hum. Genet. 122 (5), 525-533 (2007)