

CDC25C Antibody (C-term)
Purified Rabbit Polyclonal Antibody (Pab)
Catalog # AP7862b**Specification**

CDC25C Antibody (C-term) - Product Information

Application	WB,E
Primary Accession	P30307
Reactivity	Human
Host	Rabbit
Clonality	Polyclonal
Isotype	Rabbit IgG
Calculated MW	53365
Antigen Region	376-402

CDC25C Antibody (C-term) - Additional Information**Gene ID** 995**Other Names**

M-phase inducer phosphatase 3, Dual specificity phosphatase Cdc25C, CDC25C

Target/Specificity

This CDC25C antibody is generated from rabbits immunized with a KLH conjugated synthetic peptide between 376-402 amino acids from the C-terminal region of human CDC25C.

Dilution

WB~~1:1000

Format

Purified polyclonal antibody supplied in PBS with 0.09% (W/V) sodium azide. This antibody is prepared by Saturated Ammonium Sulfate (SAS) precipitation followed by dialysis against PBS.

Storage

Maintain refrigerated at 2-8°C for up to 2 weeks. For long term storage store at -20°C in small aliquots to prevent freeze-thaw cycles.

Precautions

CDC25C Antibody (C-term) is for research use only and not for use in diagnostic or therapeutic procedures.

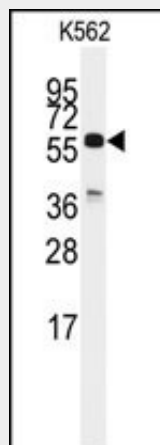
CDC25C Antibody (C-term) - Protein Information**Name** CDC25C

Function Functions as a dosage-dependent inducer in mitotic control. Tyrosine protein phosphatase required for progression of the cell cycle. When phosphorylated, highly effective in activating G2 cells into prophase. Directly dephosphorylates CDK1 and activates its kinase activity.

Cellular Location
Nucleus**CDC25C Antibody (C-term) - Protocols**

Provided below are standard protocols that you may find useful for product applications.

- [Western Blot](#)
- [Blocking Peptides](#)
- [Dot Blot](#)
- [Immunohistochemistry](#)
- [Immunofluorescence](#)
- [Immunoprecipitation](#)
- [Flow Cytometry](#)
- [Cell Culture](#)

CDC25C Antibody (C-term) - Images

Western blot analysis of anti-CDC25C Antibody (C-term) (Cat.#AP7862b) in K562 cell line lysates (35ug/lane).CDC25C(arrow) was detected using the purified Pab.

CDC25C Antibody (C-term) - Background

CDC25C is a tyrosine phosphatase and belongs to the Cdc25 phosphatase family. It directs dephosphorylation of cyclin B-bound CDC2 and triggers entry into mitosis. It is also thought to suppress p53-induced growth arrest.

CDC25C Antibody (C-term) - References

- Varmeh,S., Mol. Cancer Ther. 7 (12), 3789-3799 (2008)
Long,J.M., Cell Cycle 7 (19), 3062-3073 (2008)
Bonnet,J., Cell Cycle 7 (13), 1991-1998 (2008)