

**COPS3 Antibody (Center)**  
**Purified Rabbit Polyclonal Antibody (Pab)**  
**Catalog # AP7863c****Specification**

---

**COPS3 Antibody (Center) - Product Information**

Application	WB,E
Primary Accession	<a href="#">Q9UNS2</a>
Other Accession	<a href="#">Q68FW9</a> , <a href="#">Q88543</a> , <a href="#">Q4R898</a>
Reactivity	Human
Predicted	Monkey, Mouse, Rat
Host	Rabbit
Clonality	Polyclonal
Isotype	Rabbit IgG
Calculated MW	47873
Antigen Region	98-130

**COPS3 Antibody (Center) - Additional Information****Gene ID** 8533**Other Names**

COP9 signalosome complex subunit 3, SGN3, Signalosome subunit 3, JAB1-containing signalosome subunit 3, COPS3, CSN3

**Target/Specificity**

This COPS3 antibody is generated from rabbits immunized with a KLH conjugated synthetic peptide between 98-130 amino acids from the Central region of human COPS3.

**Dilution**

WB~~1:1000

**Format**

Purified polyclonal antibody supplied in PBS with 0.09% (W/V) sodium azide. This antibody is prepared by Saturated Ammonium Sulfate (SAS) precipitation followed by dialysis against PBS.

**Storage**

Maintain refrigerated at 2-8°C for up to 2 weeks. For long term storage store at -20°C in small aliquots to prevent freeze-thaw cycles.

**Precautions**

COPS3 Antibody (Center) is for research use only and not for use in diagnostic or therapeutic procedures.

**COPS3 Antibody (Center) - Protein Information****Name** COPS3

**Synonyms** CSN3

**Function** Component of the COP9 signalosome complex (CSN), a complex involved in various cellular and developmental processes. The CSN complex is an essential regulator of the ubiquitin (Ubl) conjugation pathway by mediating the deneddylation of the cullin subunits of SCF- type E3 ligase complexes, leading to decrease the Ubl ligase activity of SCF-type complexes such as SCF, CSA or DDB2. The complex is also involved in phosphorylation of p53/TP53, c-jun/JUN, IkappaBalpha/NFKBIA, ITPK1 and IRF8/ICSBP, possibly via its association with CK2 and PKD kinases. CSN-dependent phosphorylation of TP53 and JUN promotes and protects degradation by the Ubl system, respectively.

**Cellular Location**

Cytoplasm. Nucleus

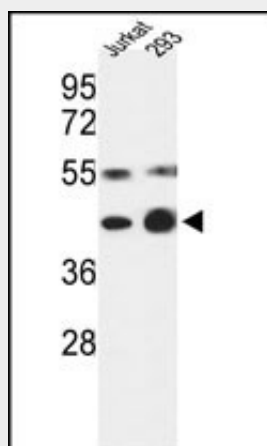
**Tissue Location**

Widely expressed. Expressed at high level in heart and skeletal muscle.

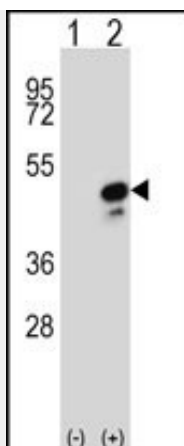
**COPS3 Antibody (Center) - Protocols**

Provided below are standard protocols that you may find useful for product applications.

- [Western Blot](#)
- [Blocking Peptides](#)
- [Dot Blot](#)
- [Immunohistochemistry](#)
- [Immunofluorescence](#)
- [Immunoprecipitation](#)
- [Flow Cytometry](#)
- [Cell Culture](#)

**COPS3 Antibody (Center) - Images**

Western blot analysis of COPS3 Antibody (Center) (Cat.#AP7863c) in Jurkat, 293 cell line lysates (35ug/lane). COPS3 (arrow) was detected using the purified Pab.



Western blot analysis of COPS3 (arrow) using rabbit polyclonal COPS3 Antibody (Center) (Cat.#AP7863c). 293 cell lysates (2 ug/lane) either nontransfected (Lane 1) or transiently transfected (Lane 2) with the COPS3 gene.

#### **COPS3 Antibody (Center) - Background**

COPS3 possesses kinase activity that phosphorylates regulators involved in signal transduction. This protein phosphorylates I kappa-Balpha, p105, and c-Jun. It acts as a docking site for complex-mediated phosphorylation.

#### **COPS3 Antibody (Center) - References**

Henriksen J., Aagesen T.H., Maelandsmo G.M., Oncogene 22:5358-5361(2003)  
Potocki L., Chen K.-S., Lupski J.R. Genomics 57:180-182(1999)  
Bech-Otschir D., Kraft R., Huang X., EMBO J. 20:1630-1639(2001)