

HSPCB Antibody (Center)
Purified Rabbit Polyclonal Antibody (Pab)
Catalog # AP7867c**Specification**

HSPCB Antibody (Center) - Product Information

Application	WB,E
Primary Accession	P08238
Other Accession	P34058 , P11499 , Q4R4T5 , Q04619 , Q76LV1 , P82995 , P30946 , O02705 , P07901 , Q4R4P1 , P07900 , P46633 , P11501 , Q76LV2 , Q9GKX7 , Q9GKX8 , P30947 , Q6AZV1
Reactivity	Human
Predicted	Bovine, Chicken, Hamster, Horse, Monkey, Mouse, Pig, Rabbit, Rat, Xenopus
Host	Rabbit
Clonality	Polyclonal
Isotype	Rabbit IgG
Calculated MW	83264
Antigen Region	403-431

HSPCB Antibody (Center) - Additional Information**Gene ID** 3326**Other Names**

Heat shock protein HSP 90-beta, HSP 90, Heat shock 84 kDa, HSP 84, HSP84, HSP90AB1, HSP90B, HSPC2, HSPCB

Target/Specificity

This HSPCB antibody is generated from rabbits immunized with a KLH conjugated synthetic peptide between 403-431 amino acids from the Central region of human HSPCB.

Dilution

WB~~1:1000

Format

Purified polyclonal antibody supplied in PBS with 0.09% (W/V) sodium azide. This antibody is prepared by Saturated Ammonium Sulfate (SAS) precipitation followed by dialysis against PBS.

Storage

Maintain refrigerated at 2-8°C for up to 2 weeks. For long term storage store at -20°C in small aliquots to prevent freeze-thaw cycles.

Precautions

HSPCB Antibody (Center) is for research use only and not for use in diagnostic or therapeutic procedures.

HSPCB Antibody (Center) - Protein Information

Name HSP90AB1 ([HGNC:5258](#))

Synonyms HSP90B, HSPC2, HSPCB

Function Molecular chaperone that promotes the maturation, structural maintenance and proper regulation of specific target proteins involved for instance in cell cycle control and signal transduction. Undergoes a functional cycle linked to its ATPase activity. This cycle probably induces conformational changes in the client proteins, thereby causing their activation. Interacts dynamically with various co-chaperones that modulate its substrate recognition, ATPase cycle and chaperone function (PubMed:[16478993](#), PubMed:[19696785](#)). Engages with a range of client protein classes via its interaction with various co-chaperone proteins or complexes, that act as adapters, simultaneously able to interact with the specific client and the central chaperone itself. Recruitment of ATP and co-chaperone followed by client protein forms a functional chaperone. After the completion of the chaperoning process, properly folded client protein and co-chaperone leave HSP90 in an ADP-bound partially open conformation and finally, ADP is released from HSP90 which acquires an open conformation for the next cycle (PubMed:[27295069](#), PubMed:[26991466](#)). Apart from its chaperone activity, it also plays a role in the regulation of the transcription machinery. HSP90 and its co-chaperones modulate transcription at least at three different levels. They first alter the steady-state levels of certain transcription factors in response to various physiological cues. Second, they modulate the activity of certain epigenetic modifiers, such as histone deacetylases or DNA methyl transferases, and thereby respond to the change in the environment. Third, they participate in the eviction of histones from the promoter region of certain genes and thereby turn on gene expression (PubMed:[25973397](#)). Antagonizes STUB1- mediated inhibition of TGF-beta signaling via inhibition of STUB1- mediated SMAD3 ubiquitination and degradation (PubMed:[24613385](#)). Promotes cell differentiation by chaperoning BIRC2 and thereby protecting from auto-ubiquitination and degradation by the proteasomal machinery (PubMed:[18239673](#)). Main chaperone involved in the phosphorylation/activation of the STAT1 by chaperoning both JAK2 and PRKCE under heat shock and in turn, activates its own transcription (PubMed:[20353823](#)). Involved in the translocation into ERGIC (endoplasmic reticulum-Golgi intermediate compartment) of leaderless cargos (lacking the secretion signal sequence) such as the interleukin 1/IL-1; the translocation process is mediated by the cargo receptor TMED10 (PubMed:[32272059](#)).

Cellular Location

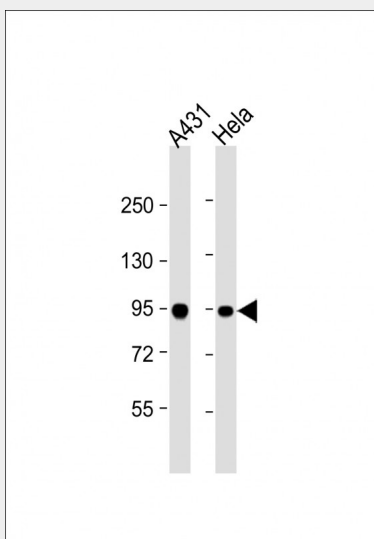
Cytoplasm. Melanosome Nucleus. Secreted. Cell membrane. Dynein axonemal particle {ECO:0000250|UniProtKB:Q6AZV1}. Cell surface. Note=Identified by mass spectrometry in melanosome fractions from stage I to stage IV (PubMed:17081065) Translocates with BIRC2 from the nucleus to the cytoplasm during differentiation (PubMed:18239673). Secreted when associated with TGFB1 processed form (LAP) (PubMed:20599762).

HSPCB Antibody (Center) - Protocols

Provided below are standard protocols that you may find useful for product applications.

- [Western Blot](#)
- [Blocking Peptides](#)
- [Dot Blot](#)
- [Immunohistochemistry](#)
- [Immunofluorescence](#)
- [Immunoprecipitation](#)
- [Flow Cytometry](#)
- [Cell Culture](#)

HSPCB Antibody (Center) - Images



All lanes : Anti-HSPCB Antibody (Center) at 1:1000 dilution Lane 1: A431 whole cell lysate Lane 2: HeLa whole cell lysate Lysates/proteins at 20 µg per lane. Secondary Goat Anti-Rabbit IgG, (H+L), Peroxidase conjugated at 1/10000 dilution. Predicted band size : 83 kDa Blocking/Dilution buffer: 5% NFDM/TBST.

HSPCB Antibody (Center) - Background

HSPCB are highly conserved molecular chaperones that have key roles in signal transduction, protein folding, protein degradation, and morphologic evolution. This protein normally associate with other cochaperones and play important roles in folding newly synthesized proteins or stabilizing and refolding denatured proteins after stress.

HSPCB Antibody (Center) - References

Hoffmann T., Hovemann B. Gene 74:491-501(1988)
Mason A., O'Connor D., Greenhalf W. Submitted (JUN-2000)
Wright L., Barril X., Dymock B., Chem. Biol. 11:775-785(2004)