

**ESRRG Antibody (Center)**  
**Purified Rabbit Polyclonal Antibody (Pab)**  
**Catalog # AP7870c****Specification**

---

**ESRRG Antibody (Center) - Product Information**

Application	WB,E
Primary Accession	<a href="#">P62508</a>
Other Accession	<a href="#">P62510</a> , <a href="#">P62509</a>
Reactivity	Human
Predicted	Mouse, Rat
Host	Rabbit
Clonality	Polyclonal
Isotype	Rabbit IgG
Calculated MW	51306
Antigen Region	189-221

**ESRRG Antibody (Center) - Additional Information****Gene ID** 2104**Other Names**

Estrogen-related receptor gamma, ERR gamma-2, Estrogen receptor-related protein 3, Nuclear receptor subfamily 3 group B member 3, ESRRG, ERR3, ERRG2, KIAA0832, NR3B3

**Target/Specificity**

This ESRRG antibody is generated from rabbits immunized with a KLH conjugated synthetic peptide between 189-221 amino acids from the Central region of human ESRRG.

**Dilution**

WB~~1:500-1:1000

**Format**

Purified polyclonal antibody supplied in PBS with 0.09% (W/V) sodium azide. This antibody is prepared by Saturated Ammonium Sulfate (SAS) precipitation followed by dialysis against PBS.

**Storage**

Maintain refrigerated at 2-8°C for up to 2 weeks. For long term storage store at -20°C in small aliquots to prevent freeze-thaw cycles.

**Precautions**

ESRRG Antibody (Center) is for research use only and not for use in diagnostic or therapeutic procedures.

**ESRRG Antibody (Center) - Protein Information****Name** ESRRG

**Synonyms** ERR3, ERRG2, KIAA0832, NR3B3

**Function** Orphan receptor that acts as a transcription activator in the absence of bound ligand. Binds specifically to an estrogen response element and activates reporter genes controlled by estrogen response elements (By similarity). Induces the expression of PERM1 in the skeletal muscle.

**Cellular Location**

Nucleus.

**Tissue Location**

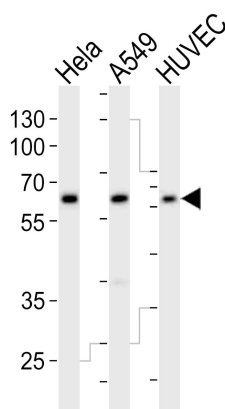
Expressed in the heart, kidney, brain, lung, bone marrow, adrenal gland, trachea, spinal cord and thyroid gland

**ESRRG Antibody (Center) - Protocols**

Provided below are standard protocols that you may find useful for product applications.

- [Western Blot](#)
- [Blocking Peptides](#)
- [Dot Blot](#)
- [Immunohistochemistry](#)
- [Immunofluorescence](#)
- [Immunoprecipitation](#)
- [Flow Cytometry](#)
- [Cell Culture](#)

**ESRRG Antibody (Center) - Images**



Western blot analysis of lysates from HeLa, A549, HUVEC cell line (from left to right), using ESRRG Antibody (Center)(Cat. #AP7870c). AP7870c was diluted at 1:1000 at each lane. A goat anti-rabbit IgG H&L(HRP) at 1:10000 dilution was used as the secondary antibody. Lysates at 20ug per lane.

**ESRRG Antibody (Center) - Background**

ESRRG is an orphan receptor that acts as transcription activator in the absence of bound ligand. This protein binds specifically to an estrogen response element and activates reporter genes

controlled by estrogen response elements.

#### **ESRRG Antibody (Center) - References**

Chen F., Zhang Q., McDonald T. Gene 228:101-109(1999)

Heard D.J., Norby P.L. Mol. Endocrinol. 14:382-392(2000)

Hong H., Yang L., Stallcup M.R.J. Biol. Chem. 274:22618-22626(1999)