

**PKN beta Antibody (C-term)**  
**Purified Rabbit Polyclonal Antibody (Pab)**  
**Catalog # AP7935a**

**Specification**

---

**PKN beta Antibody (C-term) - Product Information**

Application	WB, IHC-P,E
Primary Accession	<a href="#">Q6P5Z2</a>
Other Accession	<a href="#">NP_037487</a>
Reactivity	Human
Host	Rabbit
Clonality	Polyclonal
Isotype	Rabbit IgG
Antigen Region	463-492

**PKN beta Antibody (C-term) - Additional Information**

**Gene ID** 29941

**Other Names**

Serine/threonine-protein kinase N3, Protein kinase PKN-beta, Protein-kinase C-related kinase 3, PKN3, PKNBETA

**Target/Specificity**

This PKN beta antibody is generated from rabbits immunized with a KLH conjugated synthetic peptide between 463-492 amino acids from the C-terminal region of human PKN beta.

**Dilution**

WB~~1:500

IHC-P~~1:10~50

**Format**

Purified polyclonal antibody supplied in PBS with 0.09% (W/V) sodium azide. This antibody is prepared by Saturated Ammonium Sulfate (SAS) precipitation followed by dialysis against PBS.

**Storage**

Maintain refrigerated at 2-8°C for up to 2 weeks. For long term storage store at -20°C in small aliquots to prevent freeze-thaw cycles.

**Precautions**

PKN beta Antibody (C-term) is for research use only and not for use in diagnostic or therapeutic procedures.

**PKN beta Antibody (C-term) - Protein Information**

**Name** PKN3

**Synonyms** PKNBETA

**Function** Contributes to invasiveness in malignant prostate cancer.

**Cellular Location**

Nucleus. Cytoplasm, perinuclear region. Note=Nuclear and perinuclear Golgi region

**Tissue Location**

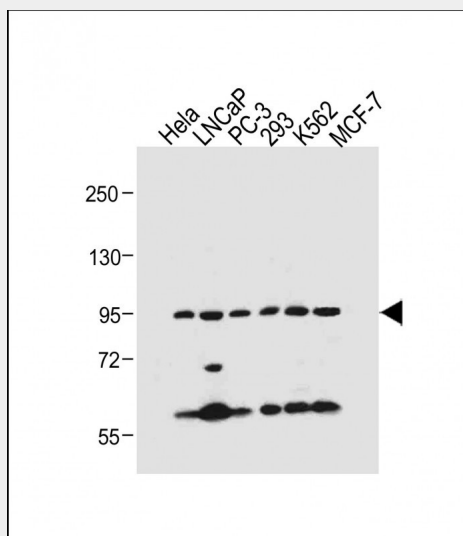
Expressed in prostate tumors and various cancer cell lines. Not expressed in adult tissues

**PKN beta Antibody (C-term) - Protocols**

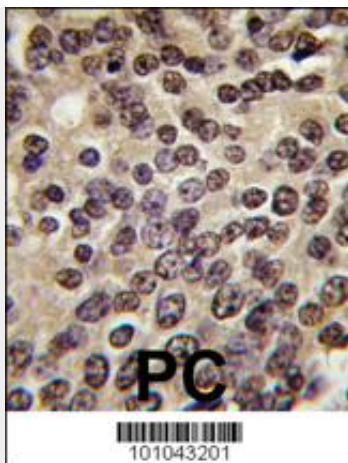
Provided below are standard protocols that you may find useful for product applications.

- [Western Blot](#)
- [Blocking Peptides](#)
- [Dot Blot](#)
- [Immunohistochemistry](#)
- [Immunofluorescence](#)
- [Immunoprecipitation](#)
- [Flow Cytometry](#)
- [Cell Culture](#)

**PKN beta Antibody (C-term) - Images**



All lanes : Anti-PKN beta Antibody (C-term) at 1:500 dilution Lane 1: HeLa whole cell lysate Lane 2: LNCaP whole cell lysate Lane 3: PC-3 whole cell lysate Lane 4: 293 whole cell lysate Lane 5: K562 whole cell lysate Lane 6: MCF-7 whole cell lysate Lysates/proteins at 20 µg per lane. Secondary Goat Anti-Rabbit IgG, (H+L), Peroxidase conjugated at 1/10000 dilution. Predicted band size : 99 kDa Blocking/Dilution buffer: 5% NFDm/TBST.



Formalin-fixed and paraffin-embedded human prostata carcinoma tissue reacted with PKN beta antibody (C-term), which was peroxidase-conjugated to the secondary antibody, followed by DAB staining. This data demonstrates the use of this antibody for immunohistochemistry; clinical relevance has not been evaluated.

#### **PKN beta Antibody (C-term) - Background**

PKN3, a protein kinase C-related molecule, mediates malignant cell growth downstream of activated PI3K. PKN3 is required for invasive prostate cell growth as assessed by 3D cell culture assays and in an orthotopic mouse tumor model by inducible expression of short hairpin RNA (shRNA). PKN3 is regulated by PI3K at both the expression level and the catalytic activity level. Therefore, PKN3 might represent a preferred target for therapeutic intervention in cancers that lack tumor suppressor PTEN function or depend on chronic activation of PI3K.

#### **PKN beta Antibody (C-term) - References**

Oishi, K., et al., Biochem. Biophys. Res. Commun. 261(3):808-814 (1999).