

**SGK2 Antibody (N-term)**  
**Purified Rabbit Polyclonal Antibody (Pab)**  
**Catalog # AP7947a****Specification**

---

**SGK2 Antibody (N-term) - Product Information**

Application	WB, IHC-P,E
Primary Accession	<a href="#">Q9HBY8</a>
Reactivity	Human, Mouse
Host	Rabbit
Clonality	Polyclonal
Isotype	Rabbit IgG
Antigen Region	1-30

**SGK2 Antibody (N-term) - Additional Information****Gene ID** 10110**Other Names**

Serine/threonine-protein kinase Sgk2, Serum/glucocorticoid-regulated kinase 2, SGK2

**Target/Specificity**

This SGK2 antibody is generated from rabbits immunized with a KLH conjugated synthetic peptide between 1-30 amino acids from the N-terminal region of human SGK2.

**Dilution**

WB~~1:1000

IHC-P~~1:50~100

**Format**

Purified polyclonal antibody supplied in PBS with 0.09% (W/V) sodium azide. This antibody is prepared by Saturated Ammonium Sulfate (SAS) precipitation followed by dialysis against PBS.

**Storage**

Maintain refrigerated at 2-8°C for up to 2 weeks. For long term storage store at -20°C in small aliquots to prevent freeze-thaw cycles.

**Precautions**

SGK2 Antibody (N-term) is for research use only and not for use in diagnostic or therapeutic procedures.

**SGK2 Antibody (N-term) - Protein Information****Name** SGK2

**Function** Serine/threonine-protein kinase which is involved in the regulation of a wide variety of ion channels, membrane transporters, cell growth, survival and proliferation. Up-regulates Na(+) channels: SCNN1A/ENAC, K(+) channels: KCNA3/Kv1.3, KCNE1 and KCNQ1, amino acid transporter:

SLC6A19, glutamate transporter: SLC1A6/EAAT4, glutamate receptors: GRIA1/GLUR1 and GRIK2/GLUR6, Na(+)/H(+) exchanger: SLC9A3/NHE3, and the Na(+)/K(+) ATPase.

**Cellular Location**

Cytoplasm. Nucleus

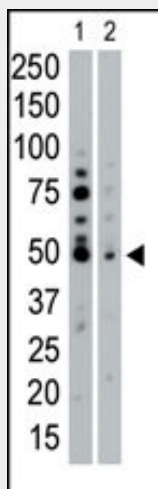
**Tissue Location**

Highly expressed in liver, kidney and pancreas, and at lower levels in brain.

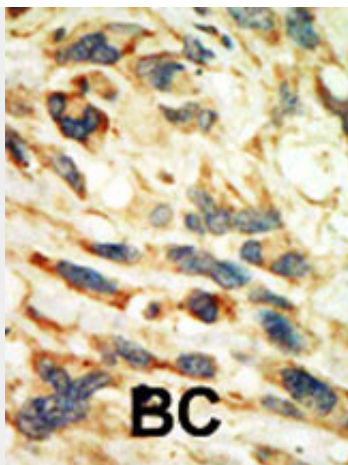
**SGK2 Antibody (N-term) - Protocols**

Provided below are standard protocols that you may find useful for product applications.

- [Western Blot](#)
- [Blocking Peptides](#)
- [Dot Blot](#)
- [Immunohistochemistry](#)
- [Immunofluorescence](#)
- [Immunoprecipitation](#)
- [Flow Cytometry](#)
- [Cell Culture](#)

**SGK2 Antibody (N-term) - Images**

The anti-SGK2 Pab (Cat. #AP7947a) is used in Western blot to detect SGK2 in HeLa cell lysate (Lane 1) and mouse pancreas tissue lysate (Lane 2).



Formalin-fixed and paraffin-embedded human cancer tissue reacted with the primary antibody, which was peroxidase-conjugated to the secondary antibody, followed by AEC staining. This data demonstrates the use of this antibody for immunohistochemistry; clinical relevance has not been evaluated. BC = breast carcinoma; HC = hepatocarcinoma.

#### **SGK2 Antibody (N-term) - Background**

SGK2, a Ser/Thr protein kinase, is similar to serum- and glucocorticoid-induced protein kinase (SGK), but this gene product is not induced by serum or glucocorticoids. Expression is induced in response to signals that activate phosphatidylinositol 3-kinase, which is also true for SGK.

#### **SGK2 Antibody (N-term) - References**

Friedrich, B., et al., Pflugers Arch. 445(6):693-696 (2003).  
Embark, H.M., et al., Pflugers Arch. 445(5):601-606 (2003).  
Gamper, N., et al., Pflugers Arch. 445(1):60-66 (2002).  
Lang, F., et al., Sci. STKE 2001 (108), RE17 (2001).  
Kobayashi, T., et al., Biochem. J. 344 Pt 1, 189-197 (1999).

#### **SGK2 Antibody (N-term) - Citations**

- [IL-6 activates serum and glucocorticoid kinase via p38alpha mitogen-activated protein kinase pathway.](#)