

MEK2 (MAP2K2) Antibody (N-term)
Purified Rabbit Polyclonal Antibody (Pab)
Catalog # AP7961a**Specification**

MEK2 (MAP2K2) Antibody (N-term) - Product Information

Application	IF, WB,E
Primary Accession	P36507
Other Accession	P36506 , Q63932
Reactivity	Human, Mouse, Rat
Host	Rabbit
Clonality	Polyclonal
Isotype	Rabbit IgG
Calculated MW	44424
Antigen Region	1-30

MEK2 (MAP2K2) Antibody (N-term) - Additional Information**Gene ID** 5605**Other Names**

Dual specificity mitogen-activated protein kinase kinase 2, MAP kinase kinase 2, MAPKK 2, ERK activator kinase 2, MAPK/ERK kinase 2, MEK 2, MAP2K2, MEK2, MKK2, PRKMK2

Target/Specificity

This MEK2 (MAP2K2) antibody is generated from rabbits immunized with a KLH conjugated synthetic peptide between 1-30 amino acids from the N-terminal region of human MEK2 (MAP2K2).

Dilution

IF~~1:10~50

WB~~1:1000

Format

Purified polyclonal antibody supplied in PBS with 0.09% (W/V) sodium azide. This antibody is purified through a protein A column, followed by peptide affinity purification.

Storage

Maintain refrigerated at 2-8°C for up to 2 weeks. For long term storage store at -20°C in small aliquots to prevent freeze-thaw cycles.

Precautions

MEK2 (MAP2K2) Antibody (N-term) is for research use only and not for use in diagnostic or therapeutic procedures.

MEK2 (MAP2K2) Antibody (N-term) - Protein Information**Name** MAP2K2

Synonyms MEK2, MKK2, PRKMK2

Function Catalyzes the concomitant phosphorylation of a threonine and a tyrosine residue in a Thr-Glu-Tyr sequence located in MAP kinases. Activates the ERK1 and ERK2 MAP kinases (By similarity). Activates BRAF in a KSR1 or KSR2-dependent manner; by binding to KSR1 or KSR2 releases the inhibitory intramolecular interaction between KSR1 or KSR2 protein kinase and N-terminal domains which promotes KSR1 or KSR2-BRAF dimerization and BRAF activation (PubMed:[29433126](#)).

Cellular Location

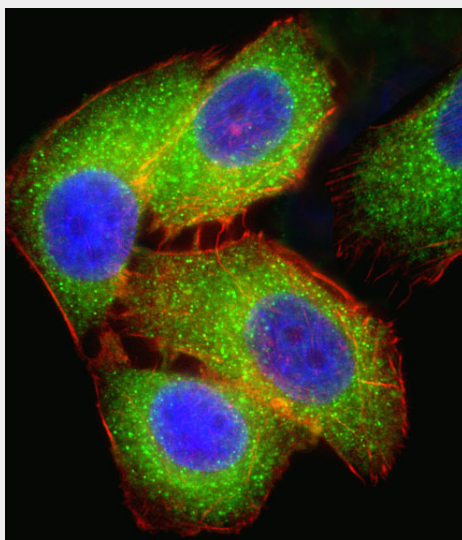
Cytoplasm. Membrane; Peripheral membrane protein. Note=Membrane localization is probably regulated by its interaction with KSR1.

MEK2 (MAP2K2) Antibody (N-term) - Protocols

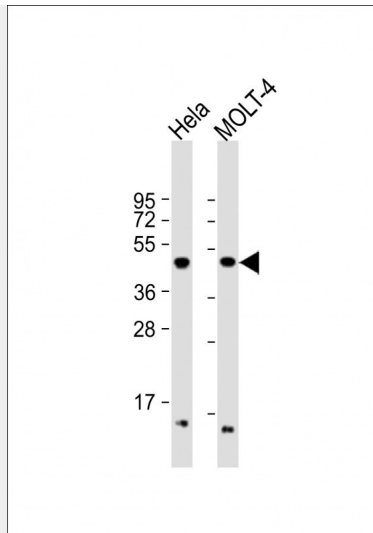
Provided below are standard protocols that you may find useful for product applications.

- [Western Blot](#)
- [Blocking Peptides](#)
- [Dot Blot](#)
- [Immunohistochemistry](#)
- [Immunofluorescence](#)
- [Immunoprecipitation](#)
- [Flow Cytometry](#)
- [Cell Culture](#)

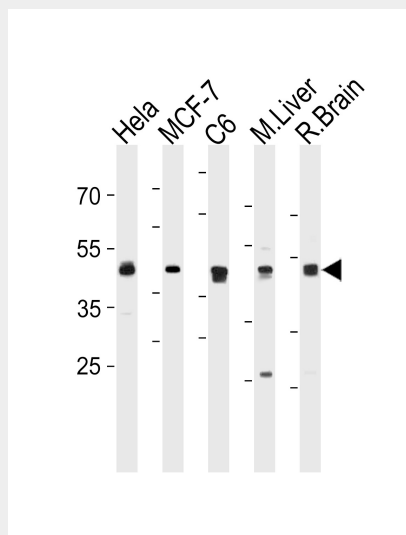
MEK2 (MAP2K2) Antibody (N-term) - Images



Fluorescent confocal image of U251 cell stained with MEK2 (MAP2K2) Antibody (N-term)(Cat#AP7961a).U251 cells were fixed with 4% PFA (20 min), permeabilized with Triton X-100 (0.1%, 10 min), then incubated with MEK2 (MAP2K2) primary antibody (1:25, 1 h at 37°C). For secondary antibody, Alexa Fluor® 488 conjugated donkey anti-rabbit antibody (green) was used (1:400, 50 min at 37°C).Cytoplasmic actin was counterstained with Alexa Fluor® 555 (red) conjugated Phalloidin (7units/ml, 1 h at 37°C). Nuclei were counterstained with DAPI (blue) (10 µg/ml, 10 min).MEK2 (MAP2K2) immunoreactivity is localized to Cytoplasm significantly.



All lanes : Anti-MEK2 (MAP2K2) Antibody (N-term) at 1:1000 dilution Lane 1: HeLa whole cell lysate Lane 2: MOLT-4 whole cell lysate Lysates/proteins at 20 µg per lane. Secondary Goat Anti-Rabbit IgG, (H+L), Peroxidase conjugated at 1/10000 dilution. Predicted band size : 44 kDa Blocking/Dilution buffer: 5% NFDM/TBST.



MEK2 (MAP2K2) Antibody (N-term) (Cat. #AP7961a) western blot analysis in HeLa, MCF-7, rat C6 cell line and mouse Liver, rat Brain tissue lysates (35 µg/lane). This demonstrates the MEK2 (MAP2K2) antibody detected the MEK2 (MAP2K2) protein (arrow).

MEK2 (MAP2K2) Antibody (N-term) - Background

MAP2K2 is a dual specificity protein kinase that belongs to the MAP kinase kinase family. This kinase is known to play a critical role in mitogen growth factor signal transduction. It phosphorylates and thus activates MAPK1/ERK2 and MAPK2/ERK3. The activation of this kinase itself is dependent on the Ser/Thr phosphorylation by MAP kinase kinase kinases. The inhibition or degradation of this kinase is found to be involved in the pathogenesis of Yersinia and anthrax.

MEK2 (MAP2K2) Antibody (N-term) - References

Burroughs, K.D., et al., Mol. Cancer Res. 1(4):312-322 (2003).
Tran, H., et al., Mol. Cell. Biol. 23(20):7177-7188 (2003).
Li, S.P., et al., Cancer Res. 63(13):3473-3477 (2003).

Li, Y., et al., J. Biol. Chem. 278(16):13663-13671 (2003).
Liu, X., et al., J. Biol. Chem. 277(42):39312-39319 (2002).