

**TLL2 Antibody (N-term)**  
**Purified Rabbit Polyclonal Antibody (Pab)**  
**Catalog # AP7983a****Specification**

---

**TLL2 Antibody (N-term) - Product Information**

Application	WB, IHC-P,E
Primary Accession	<a href="#">Q9Y6L7</a>
Reactivity	Human
Host	Rabbit
Clonality	Polyclonal
Isotype	Rabbit IgG
Calculated MW	113557
Antigen Region	23-53

**TLL2 Antibody (N-term) - Additional Information****Gene ID** 7093**Other Names**

Tolloid-like protein 2, 3424-, TLL2, KIAA0932

**Target/Specificity**

This TLL2 antibody is generated from rabbits immunized with a KLH conjugated synthetic peptide between 23-53 amino acids from the N-terminal region of human TLL2.

**Dilution**

WB~~1:1000

IHC-P~~1:10~50

**Format**

Purified polyclonal antibody supplied in PBS with 0.09% (W/V) sodium azide. This antibody is prepared by Saturated Ammonium Sulfate (SAS) precipitation followed by dialysis against PBS.

**Storage**

Maintain refrigerated at 2-8°C for up to 2 weeks. For long term storage store at -20°C in small aliquots to prevent freeze-thaw cycles.

**Precautions**

TLL2 Antibody (N-term) is for research use only and not for use in diagnostic or therapeutic procedures.

**TLL2 Antibody (N-term) - Protein Information****Name** TLL2**Synonyms** KIAA0932

**Function** Protease which specifically processes pro-lysyl oxidase. Required for the embryonic development. Predominant protease, which in the development, influences dorsal-ventral patterning and skeletogenesis.

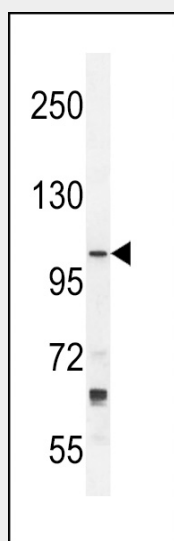
**Cellular Location**  
Secreted.

### TLL2 Antibody (N-term) - Protocols

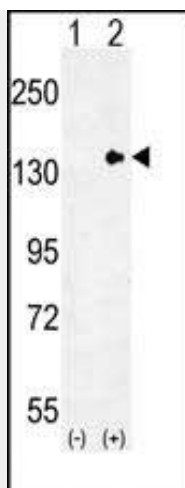
Provided below are standard protocols that you may find useful for product applications.

- [Western Blot](#)
- [Blocking Peptides](#)
- [Dot Blot](#)
- [Immunohistochemistry](#)
- [Immunofluorescence](#)
- [Immunoprecipitation](#)
- [Flow Cytometry](#)
- [Cell Culture](#)

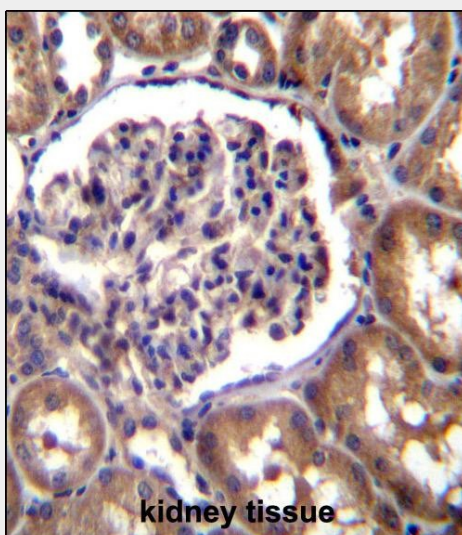
### TLL2 Antibody (N-term) - Images



TLL2 Antibody (N-term) (Cat.#AP7983a) western blot analysis in NCI-H292 cell line lysates (35ug/lane). This demonstrates the TLL2 antibody detected the TLL2 protein (arrow).



Western blot analysis of TLL2 (arrow) using rabbit polyclonal TLL2 Antibody (N-term) (Cat. #AP7983a). 293 cell lysates (2 ug/lane) either nontransfected (Lane 1) or transiently transfected (Lane 2) with the TLL2 gene.



TLL2 Antibody (N-term) (Cat. #AP7983a) immunohistochemistry analysis in formalin fixed and paraffin embedded human kidney tissue followed by peroxidase conjugation of the secondary antibody and DAB staining. This data demonstrates the use of TLL2 Antibody (N-term) for immunohistochemistry. Clinical relevance has not been evaluated.

#### **TLL2 Antibody (N-term) - Background**

TLL2 is an astacin-like zinc-dependent metalloprotease and is a subfamily member of the metzincin family. Unlike other family members, a similar protein in mice does not cleave procollagen C-propeptides or chordin.

#### **TLL2 Antibody (N-term) - References**

Scott, I.C., Dev. Biol. 213 (2), 283-300 (1999)