

**GLK Antibody (C-term)**  
**Purified Rabbit Polyclonal Antibody (Pab)**  
**Catalog # AP8005B****Specification**

---

**GLK Antibody (C-term) - Product Information**

Application	WB, IHC-P,E
Primary Accession	<a href="#">Q8IVH8</a>
Reactivity	Human
Host	Rabbit
Clonality	Polyclonal
Isotype	Rabbit IgG
Calculated MW	101316
Antigen Region	423-453

**GLK Antibody (C-term) - Additional Information****Gene ID** 8491**Other Names**

Mitogen-activated protein kinase kinase kinase kinase 3, Germinal center kinase-related protein kinase, GLK, MAPK/ERK kinase kinase kinase 3, MEK kinase kinase 3, MEKKK 3, MAP4K3, RAB8IPL1

**Target/Specificity**

This GLK antibody is generated from rabbits immunized with a KLH conjugated synthetic peptide between 423-453 amino acids from the C-terminal region of human GLK.

**Dilution**

WB~~1:1000  
IHC-P~~1:50~100

**Format**

Purified polyclonal antibody supplied in PBS with 0.09% (W/V) sodium azide. This antibody is prepared by Saturated Ammonium Sulfate (SAS) precipitation followed by dialysis against PBS.

**Storage**

Maintain refrigerated at 2-8°C for up to 2 weeks. For long term storage store at -20°C in small aliquots to prevent freeze-thaw cycles.

**Precautions**

GLK Antibody (C-term) is for research use only and not for use in diagnostic or therapeutic procedures.

**GLK Antibody (C-term) - Protein Information****Name** MAP4K3**Synonyms** RAB8IPL1

**Function** May play a role in the response to environmental stress. Appears to act upstream of the JUN N-terminal pathway.

**Tissue Location**

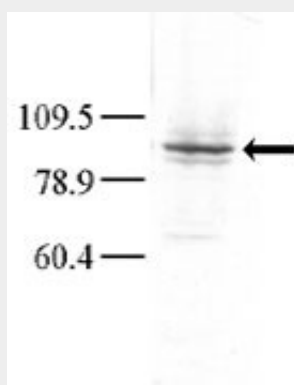
Ubiquitously expressed in all tissues examined, with high levels in heart, brain, placenta, skeletal muscle, kidney and pancreas and lower levels in lung and liver

**GLK Antibody (C-term) - Protocols**

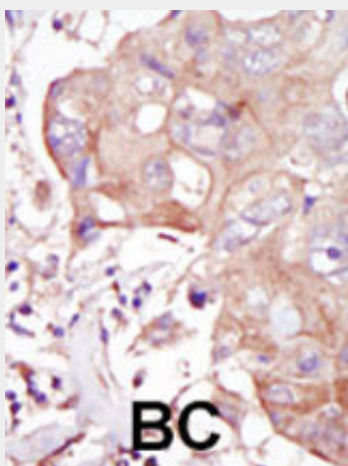
Provided below are standard protocols that you may find useful for product applications.

- [Western Blot](#)
- [Blocking Peptides](#)
- [Dot Blot](#)
- [Immunohistochemistry](#)
- [Immunofluorescence](#)
- [Immunoprecipitation](#)
- [Flow Cytometry](#)
- [Cell Culture](#)

**GLK Antibody (C-term) - Images**



Western blot analysis of anti-GLK Pab (Cat. #AP8005b) in Hela cell lysate. Dilution for anti-GLK was 1:100; dilution for secondary goat anti-rabbit-HRP was 1:7000. A chemiluminescent kit was used for development of the Western blot. Data and protocol courtesy of Dr. Richard Lu, Partners HealthCare System at Harvard University.



Formalin-fixed and paraffin-embedded human cancer tissue reacted with the primary antibody, which was peroxidase-conjugated to the secondary antibody, followed by DAB staining. This data demonstrates the use of this antibody for immunohistochemistry; clinical relevance has not been evaluated. BC = breast carcinoma; HC = hepatocarcinoma.

**GLK Antibody (C-term) - Background**

GLK is a member of the Ste20 family of serine/threonine protein kinases. The protein belongs to the subfamily that consists of members, such as germinal center kinase (GCK), that are characterized by an N-terminal catalytic domain and C-terminal regulatory domain. The kinase activity of the encoded protein can be stimulated by UV radiation and tumor necrosis factor- $\alpha$ . The protein specifically activates the c-Jun N-terminal kinase (JNK) signaling pathway. Evidence suggests that it functions upstream of mitogen-activated protein kinase kinase kinase 1 (MEKK1). This gene previously was referred to as RAB8-interacting protein-like 1 (RAB8IPL1), but it has been renamed mitogen-activated protein kinase kinase kinase kinase 3 (MAP4K3).

**GLK Antibody (C-term) - References**

Diener, K., et al., Proc. Natl. Acad. Sci. U.S.A. 94(18):9687-9692 (1997).