

**NEK11L Antibody (C-term)**  
**Purified Rabbit Polyclonal Antibody (Pab)**  
**Catalog # AP8070b****Specification**

---

**NEK11L Antibody (C-term) - Product Information**

Application	WB,E
Primary Accession	<a href="#">Q8NG66</a>
Reactivity	Human
Host	Rabbit
Clonality	Polyclonal
Isotype	Rabbit IgG
Calculated MW	74192
Antigen Region	480-510

**NEK11L Antibody (C-term) - Additional Information****Gene ID** 79858**Other Names**

Serine/threonine-protein kinase Nek11, Never in mitosis A-related kinase 11, NimA-related protein kinase 11, NEK11 ([http://www.genenames.org/cgi-bin/gene\\_symbol\\_report?hgnc\\_id=18593](http://www.genenames.org/cgi-bin/gene_symbol_report?hgnc_id=18593))  
HGNC:18593

**Target/Specificity**

This NEK11L antibody is generated from rabbits immunized with a KLH conjugated synthetic peptide between 480-510 amino acids from the C-terminal region of human NEK11L.

**Dilution**

WB~~1:1000

**Format**

Purified polyclonal antibody supplied in PBS with 0.09% (W/V) sodium azide. This antibody is purified through a protein A column, followed by peptide affinity purification.

**Storage**

Maintain refrigerated at 2-8°C for up to 2 weeks. For long term storage store at -20°C in small aliquots to prevent freeze-thaw cycles.

**Precautions**

NEK11L Antibody (C-term) is for research use only and not for use in diagnostic or therapeutic procedures.

**NEK11L Antibody (C-term) - Protein Information****Name** NEK11 ([HGNC:18593](#))

**Function** Protein kinase which plays an important role in the G2/M checkpoint response to DNA damage. Controls degradation of CDC25A by directly phosphorylating it on residues whose phosphorylation is required for BTRC-mediated polyubiquitination and degradation.

**Cellular Location**

Nucleus. Nucleus, nucleolus. Note=Nuclear during interphase but moves to the polar microtubules during prometaphase and metaphase (PubMed:12154088). Accumulates in the nucleolus in G1/S-arrested cells (PubMed:15161910).

**Tissue Location**

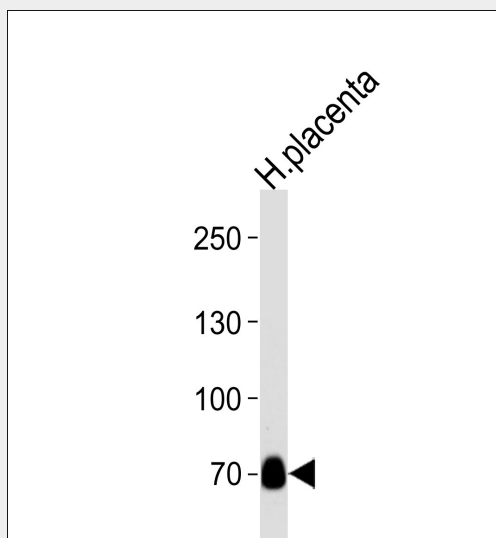
Poorly expressed in cerebellum, trachea, lung, appendix, and uterus.

**NEK11L Antibody (C-term) - Protocols**

Provided below are standard protocols that you may find useful for product applications.

- [Western Blot](#)
- [Blocking Peptides](#)
- [Dot Blot](#)
- [Immunohistochemistry](#)
- [Immunofluorescence](#)
- [Immunoprecipitation](#)
- [Flow Cytometry](#)
- [Cell Culture](#)

**NEK11L Antibody (C-term) - Images**



Western blot analysis of lysate from human placenta tissue lysate, using NEK11L Antibody E495 (Cat. #AP8070b). AP8070b was diluted at 1:1000 at each lane. A goat anti-rabbit IgG H&L(HRP) at 1:5000 dilution was used as the secondary antibody. Lysate at 35ug per lane.

**NEK11L Antibody (C-term) - Background**

NEK11 belongs to the NIMA family of kinases, which are involved in DNA replication and genotoxic stress responses (Noguchi et al., 2002 [PubMed 12154088]).[supplied by OMIM]

**NEK11L Antibody (C-term) - References**

Blume-Jensen P, et al. Nature 2001. 411: 355.  
Cantrell D, J. Cell Sci. 2001. 114: 1439.  
Jhiang S Oncogene 2000. 19: 5590.  
Manning G, et al. Science 2002. 298: 1912.  
Moller, D, et al. Am. J. Physiol. 1994. 266: C351-C359.  
Robertson, S. et al. Trends Genet. 2000. 16: 368.  
Robinson D, et al. Oncogene 2000. 19: 5548.  
Van der Ven, P, et al. Hum. Molec. Genet. 1993. 2: 1889.  
Vanhaesebroeck, B, et al. Biochem. J. 2000. 346: 561.  
Van Weering D, et al. Recent Results Cancer Res. 1998. 154: 271.