

BAIAP1 (MAGI1)Antibody (C-term)
Purified Rabbit Polyclonal Antibody (Pab)
Catalog # AP8173A**Specification**

BAIAP1 (MAGI1)Antibody (C-term) - Product Information

Application	WB, IHC-P,E
Primary Accession	O96QZ7-3 and O96QZ7-4
Other Accession	O4L1J4 , NP_004733
Reactivity	Human
Predicted	Rat
Host	Rabbit
Clonality	Polyclonal
Isotype	Rabbit IgG
Antigen Region	1227-1256

BAIAP1 (MAGI1)Antibody (C-term) - Additional Information**Other Names**

Membrane-associated guanylate kinase, WW and PDZ domain-containing protein 1, Atrophin-1-interacting protein 3, AIP-3, BAI1-associated protein 1, BAP-1, Membrane-associated guanylate kinase inverted 1, MAGI-1, Trinucleotide repeat-containing gene 19 protein, WW domain-containing protein 3, WWP3, MAGI1, AIP3, BAIAP1, BAP1, TNRC19

Target/Specificity

This BAIAP1 (MAGI1) antibody is generated from rabbits immunized with a KLH conjugated synthetic peptide between 1227-1256 amino acids from the C-terminal region of human BAIAP1 (MAGI1).

Dilution

WB~~1:1000
IHC-P~~1:50~100

Format

Purified polyclonal antibody supplied in PBS with 0.09% (W/V) sodium azide. This antibody is prepared by Saturated Ammonium Sulfate (SAS) precipitation followed by dialysis against PBS.

Storage

Maintain refrigerated at 2-8°C for up to 2 weeks. For long term storage store at -20°C in small aliquots to prevent freeze-thaw cycles.

Precautions

BAIAP1 (MAGI1)Antibody (C-term) is for research use only and not for use in diagnostic or therapeutic procedures.

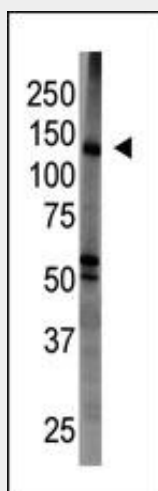
BAIAP1 (MAGI1)Antibody (C-term) - Protein Information

BAIAP1 (MAGI1)Antibody (C-term) - Protocols

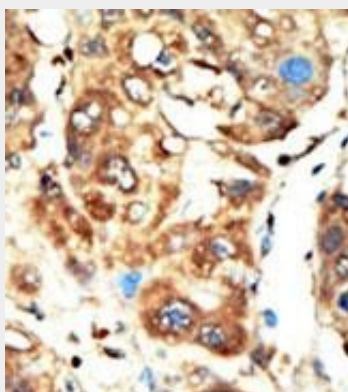
Provided below are standard protocols that you may find useful for product applications.

- [Western Blot](#)
- [Blocking Peptides](#)
- [Dot Blot](#)
- [Immunohistochemistry](#)
- [Immunofluorescence](#)
- [Immunoprecipitation](#)
- [Flow Cytometry](#)
- [Cell Culture](#)

BAIAP1 (MAGI1)Antibody (C-term) - Images



The anti-BAIAP1 Pab (Cat. #AP8173a) is used in Western blot to detect BAIAP1 in mouse brain tissue lysate.



Formalin-fixed and paraffin-embedded human cancer tissue reacted with the primary antibody, which was peroxidase-conjugated to the secondary antibody, followed by AEC staining. This data demonstrates the use of this antibody for immunohistochemistry; clinical relevance has not been evaluated. BC = breast carcinoma; HC = hepatocarcinoma.

BAIAP1 (MAGI1)Antibody (C-term) - Background

BAIAP1 is a member of the membrane-associated guanylate kinase homologue (MAGUK) family. Characterized by two WW domains, a guanylate kinase domain, and five PDZ domains, this protein interacts with the cytoplasmic region of BAI1. Together, these proteins may play a role in cell

adhesion and signal transduction.

BAIAP1 (MAGI1)Antibody (C-term) - References

- Patrie, K.M., et al., J. Biol. Chem. 277(33):30183-30190 (2002).
Shiratsuchi, T., et al., Biochem. Biophys. Res. Commun. 247(3):597-604 (1998).
Wood, J.D., et al., Mol. Cell. Neurosci. 11(3):149-160 (1998).
Margolis, R.L., et al., Hum. Genet. 100(1):114-122 (1997).
Pirozzi, G., et al., J. Biol. Chem. 272(23):14611-14616 (1997).