

**Guanylyl Cyclase alpha 2 (GUCY1A2) Antibody (C-term)**  
**Purified Rabbit Polyclonal Antibody (Pab)**  
**Catalog # AP8176b****Specification**

---

**Guanylyl Cyclase alpha 2 (GUCY1A2) Antibody (C-term) - Product Information**

|                   |  |
|-------------------|--|
| Application       | WB, IHC-P,E  |
| Primary Accession | <a href="#">P33402</a>                             |
| Other Accession   | <a href="#">O9WVI4</a> , <a href="#">NP_000846</a> |
| Reactivity        | Human  |
| Predicted         | Rat  |
| Host              | Rabbit   |
| Clonality         | Polyclonal   |
| Isotype           | Rabbit IgG   |
| Calculated MW     | 81750  |
| Antigen Region    | 699-732  |

**Guanylyl Cyclase alpha 2 (GUCY1A2) Antibody (C-term) - Additional Information****Gene ID** 2977**Other Names**

Guanylate cyclase soluble subunit alpha-2, GCS-alpha-2, GUCY1A2, GUC1A2, GUCSA2

**Target/Specificity**

This Guanylyl Cyclase alpha 2 (GUCY1A2) antibody is generated from rabbits immunized with a KLH conjugated synthetic peptide between 699-732 amino acids from the C-terminal region of human Guanylyl Cyclase alpha 2 (GUCY1A2).

**Dilution**

WB~~1:1000

IHC-P~~1:50~100

**Format**

Purified polyclonal antibody supplied in PBS with 0.09% (W/V) sodium azide. This antibody is prepared by Saturated Ammonium Sulfate (SAS) precipitation followed by dialysis against PBS.

**Storage**

Maintain refrigerated at 2-8°C for up to 2 weeks. For long term storage store at -20°C in small aliquots to prevent freeze-thaw cycles.

**Precautions**

Guanylyl Cyclase alpha 2 (GUCY1A2) Antibody (C-term) is for research use only and not for use in diagnostic or therapeutic procedures.

**Guanylyl Cyclase alpha 2 (GUCY1A2) Antibody (C-term) - Protein Information****Name** GUCY1A2

**Synonyms** GUC1A2, GUCSA2

**Function** Has guanylyl cyclase on binding to the beta-1 subunit.

**Cellular Location**  
Cytoplasm.

**Tissue Location**

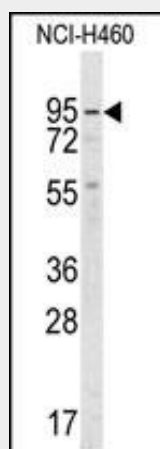
Isoform 1 is expressed in fetal brain, liver, colon, endothelium and testis. Isoform 2 is expressed only in liver, colon and endothelium

**Guanylyl Cyclase alpha 2 (GUCY1A2) Antibody (C-term) - Protocols**

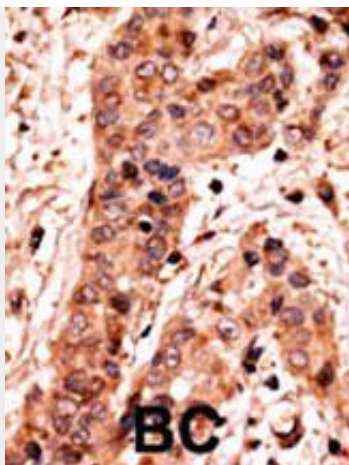
Provided below are standard protocols that you may find useful for product applications.

- [Western Blot](#)
- [Blocking Peptides](#)
- [Dot Blot](#)
- [Immunohistochemistry](#)
- [Immunofluorescence](#)
- [Immunoprecipitation](#)
- [Flow Cytometry](#)
- [Cell Culture](#)

**Guanylyl Cyclase alpha 2 (GUCY1A2) Antibody (C-term) - Images**



Western blot analysis of anti-GUCY1A2 Antibody (C-term) (Cat.#AP8176b) in NCI-H460 cell line lysates (35ug/lane). GUCY1A2 (arrow) was detected using the purified Pab.



Formalin-fixed and paraffin-embedded human cancer tissue reacted with the primary antibody, which was peroxidase-conjugated to the secondary antibody, followed by AEC staining. This data demonstrates the use of this antibody for immunohistochemistry; clinical relevance has not been evaluated. BC = breast carcinoma; HC = hepatocarcinoma.

#### **Guanylyl Cyclase alpha 2 (GUCY1A2) Antibody (C-term) - Background**

Soluble guanylate cyclase (sGC), a heterodimeric protein consisting of an alpha and a beta subunit, catalyzes the conversion of GTP to the second messenger cGMP and functions as the main receptor for nitric oxide and nitrovasodilator drugs.

#### **Guanylyl Cyclase alpha 2 (GUCY1A2) Antibody (C-term) - References**

- Baba, H., et al., Neuroreport 15(4):677-680 (2004).  
Bellamy, T.C., et al., Proc. Natl. Acad. Sci. U.S.A. 99(1):507-510 (2002).  
Russwurm, M., et al., J. Biol. Chem. 276(48):44647-44652 (2001).  
Bamberger, A.M., et al., J. Clin. Endocrinol. Metab. 86(2):909-912 (2001).  
Budworth, J., et al., Biochem. Biophys. Res. Commun. 263(3):696-701 (1999).