

**ZFP36 Antibody (Center)**  
**Purified Rabbit Polyclonal Antibody (Pab)**  
**Catalog # AP8520c****Specification**

---

**ZFP36 Antibody (Center) - Product Information**

Application	WB, IHC-P, FC,E
Primary Accession	<a href="#">P16415</a>
Reactivity	Human, Mouse
Host	Rabbit
Clonality	Polyclonal
Isotype	Rabbit IgG
Antigen Region	119-148

**ZFP36 Antibody (Center) - Additional Information****Gene ID** 55552**Other Names**

Zinc finger protein 823, Zinc finger protein ZFP-36, ZNF823, ZFP36

**Target/Specificity**

This ZFP36 antibody is generated from rabbits immunized with a KLH conjugated synthetic peptide between 119-148 amino acids from the Central region of human ZFP36.

**Dilution**

WB~~1:1000  
IHC-P~~1:50~100  
FC~~1:10~50

**Format**

Purified polyclonal antibody supplied in PBS with 0.09% (W/V) sodium azide. This antibody is prepared by Saturated Ammonium Sulfate (SAS) precipitation followed by dialysis against PBS.

**Storage**

Maintain refrigerated at 2-8°C for up to 2 weeks. For long term storage store at -20°C in small aliquots to prevent freeze-thaw cycles.

**Precautions**

ZFP36 Antibody (Center) is for research use only and not for use in diagnostic or therapeutic procedures.

**ZFP36 Antibody (Center) - Protein Information****Name** ZNF823**Synonyms** ZFP36

**Function** May be involved in transcriptional regulation.

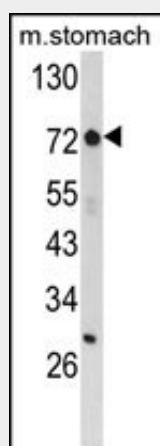
**Cellular Location**  
Nucleus.

### ZFP36 Antibody (Center) - Protocols

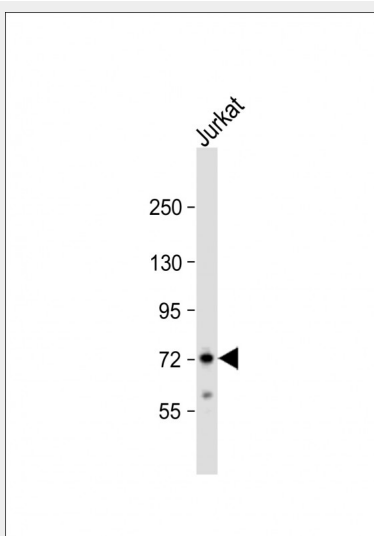
Provided below are standard protocols that you may find useful for product applications.

- [Western Blot](#)
- [Blocking Peptides](#)
- [Dot Blot](#)
- [Immunohistochemistry](#)
- [Immunofluorescence](#)
- [Immunoprecipitation](#)
- [Flow Cytometry](#)
- [Cell Culture](#)

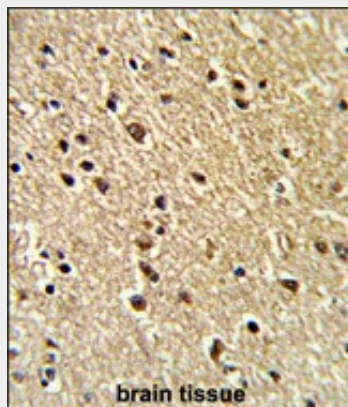
### ZFP36 Antibody (Center) - Images



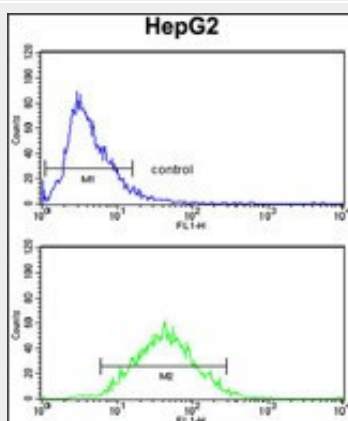
Western blot analysis of ZFP36 Antibody (Center) (Cat. #AP8520c) in mouse stomach tissue lysates (35ug/lane). ZFP36 (arrow) was detected using the purified Pab.(8ug/ml)



Anti-ZFP36 Antibody (Center) at 1:1000 dilution + Jurkat whole cell lysate Lysates/proteins at 20 µg per lane. Secondary Goat Anti-Rabbit IgG, (H+L), Peroxidase conjugated at 1/10000 dilution. Predicted band size : 70 kDa Blocking/Dilution buffer: 5% NFDM/TBST.



Formalin-fixed and paraffin-embedded human brain tissue reacted with ZFP36 Antibody (Center), which was peroxidase-conjugated to the secondary antibody, followed by DAB staining. This data demonstrates the use of this antibody for immunohistochemistry; clinical relevance has not been evaluated.



ZFP36 Antibody (Center) (Cat.#AP8520c) flow cytometry analysis of HepG2 cells (bottom histogram) compared to a negative control (top histogram). FITC-conjugated goat-anti-rabbit secondary antibodies were used for the analysis.

### **ZFP36 Antibody (Center) - Background**

ZFP36 may be involved in transcriptional regulation.

### **ZFP36 Antibody (Center) - References**

Kimura,K., et.al., Genome Res. 16 (1), 55-65 (2006)  
Strausberg,R.L., et.al., Proc. Natl. Acad. Sci. U.S.A. 99 (26), 16899-16903 (2002)