

**LRPAP1 Antibody (C-term)**  
**Affinity Purified Rabbit Polyclonal Antibody (Pab)**  
**Catalog # AP8529b**

**Specification**

---

**LRPAP1 Antibody (C-term) - Product Information**

Application	WB, IHC-P, FC,E
Primary Accession	<a href="#">P30533</a>
Reactivity	Human
Host	Rabbit
Clonality	Polyclonal
Isotype	Rabbit IgG
Calculated MW	41466
Antigen Region	281-309

**LRPAP1 Antibody (C-term) - Additional Information**

**Gene ID** 4043

**Other Names**

Alpha-2-macroglobulin receptor-associated protein, Alpha-2-MRAP, Low density lipoprotein receptor-related protein-associated protein 1, RAP, LRPAP1, A2MRAP

**Target/Specificity**

This LRPAP1 antibody is generated from rabbits immunized with a KLH conjugated synthetic peptide between 281-309 amino acids from the C-terminal region of human LRPAP1.

**Dilution**

WB~~1:1000  
IHC-P~~1:10~50  
FC~~1:10~50

**Format**

Purified polyclonal antibody supplied in PBS with 0.09% (W/V) sodium azide. This antibody is purified through a protein A column, followed by peptide affinity purification.

**Storage**

Maintain refrigerated at 2-8°C for up to 2 weeks. For long term storage store at -20°C in small aliquots to prevent freeze-thaw cycles.

**Precautions**

LRPAP1 Antibody (C-term) is for research use only and not for use in diagnostic or therapeutic procedures.

**LRPAP1 Antibody (C-term) - Protein Information**

**Name** LRPAP1 ([HGNC:6701](#))

**Synonyms** A2MRAP

**Function** Molecular chaperone for LDL receptor-related proteins that may regulate their ligand binding activity along the secretory pathway.

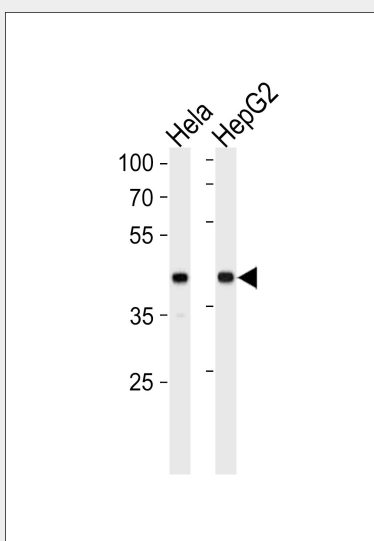
**Cellular Location**

Rough endoplasmic reticulum lumen. Endoplasmic reticulum-Golgi intermediate compartment lumen. Golgi apparatus, cis- Golgi network. Golgi apparatus lumen. Endosome lumen. Cell surface. Note=May be associated with receptors at the cell surface.

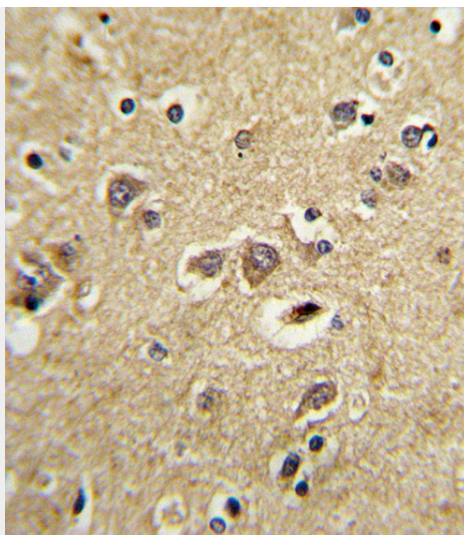
**LRPAP1 Antibody (C-term) - Protocols**

Provided below are standard protocols that you may find useful for product applications.

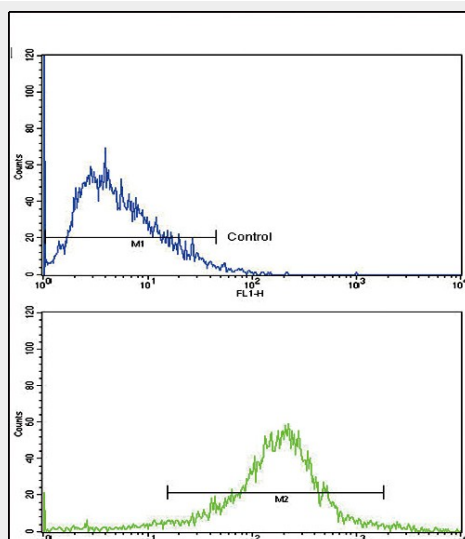
- [Western Blot](#)
- [Blocking Peptides](#)
- [Dot Blot](#)
- [Immunohistochemistry](#)
- [Immunofluorescence](#)
- [Immunoprecipitation](#)
- [Flow Cytometry](#)
- [Cell Culture](#)

**LRPAP1 Antibody (C-term) - Images**

LRPAP1 Antibody (C-term) (Cat. #AP8529b) western blot analysis in HeLa, HepG2 cell line lysates (35ug/lane). This demonstrates the LRPAP1 antibody detected the LRPAP1 protein (arrow).



Formalin-fixed and paraffin-embedded human brain tissue with LRPAP1 Antibody (C-term), which was peroxidase-conjugated to the secondary antibody, followed by DAB staining. This data demonstrates the use of this antibody for immunohistochemistry; clinical relevance has not been evaluated.



Flow cytometric analysis of HepG2 cells using LRPAP1 Antibody (C-term)(bottom histogram) compared to a negative control cell (top histogram). FITC-conjugated goat-anti-rabbit secondary antibodies were used for the analysis.

### LRPAP1 Antibody (C-term) - Background

LRPAP1 interacts with LRP1/alpha-2-macroglobulin receptor and glycoprotein 330.

### LRPAP1 Antibody (C-term) - References

Lisi,S., et.al., J. Endocrinol. Invest. 30 (10), 839-843 (2007)  
Vertegaal,A.C., et.al., Mol. Cell Proteomics 5 (12), 2298-2310 (2006)

### LRPAP1 Antibody (C-term) - Citations

- [Primate-specific miR-603 is implicated in the risk and pathogenesis of Alzheimer's disease.](#)