

PTAR1 Antibody (Center)
Affinity Purified Rabbit Polyclonal Antibody (Pab)
Catalog # AP8622c

Specification

PTAR1 Antibody (Center) - Product Information

| | |
|-------------------|------------------------|
| Application | WB, IHC-P, FC,E |
| Primary Accession | Q7Z6K3 |
| Reactivity | Human |
| Host | Rabbit |
| Clonality | Polyclonal |
| Isotype | Rabbit IgG |
| Calculated MW | 46405 |
| Antigen Region | 60-89 |

PTAR1 Antibody (Center) - Additional Information

Gene ID 375743

Other Names

Protein prenyltransferase alpha subunit repeat-containing protein 1, PTAR1

Target/Specificity

This PTAR1 antibody is generated from rabbits immunized with a KLH conjugated synthetic peptide between 60-89 amino acids from the Central region of human PTAR1.

Dilution

WB~~1:1000
IHC-P~~1:50~100
FC~~1:10~50

Format

Purified polyclonal antibody supplied in PBS with 0.09% (W/V) sodium azide. This antibody is purified through a protein A column, followed by peptide affinity purification.

Storage

Maintain refrigerated at 2-8°C for up to 2 weeks. For long term storage store at -20°C in small aliquots to prevent freeze-thaw cycles.

Precautions

PTAR1 Antibody (Center) is for research use only and not for use in diagnostic or therapeutic procedures.

PTAR1 Antibody (Center) - Protein Information

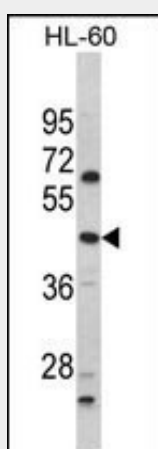
Name PTAR1

PTAR1 Antibody (Center) - Protocols

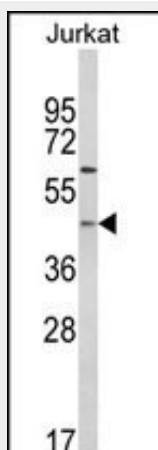
Provided below are standard protocols that you may find useful for product applications.

- [Western Blot](#)
- [Blocking Peptides](#)
- [Dot Blot](#)
- [Immunohistochemistry](#)
- [Immunofluorescence](#)
- [Immunoprecipitation](#)
- [Flow Cytometry](#)
- [Cell Culture](#)

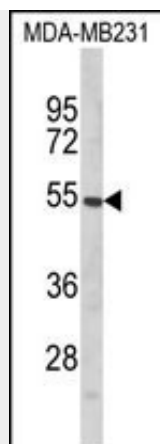
PTAR1 Antibody (Center) - Images



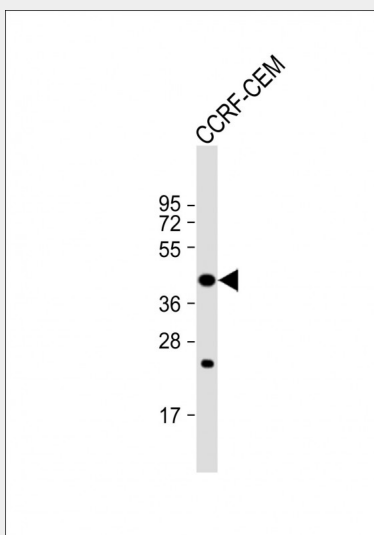
Western blot analysis of PTAR1 Antibody (Center) (Cat. #AP8622c) in HL-60 cell line lysates (35ug/lane). PTAR1 (arrow) was detected using the purified Pab.



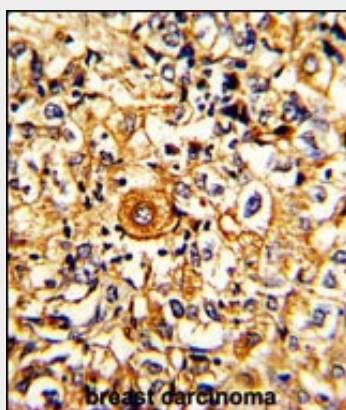
Western blot analysis of PTAR1 Antibody (Center) (Cat. #AP8622c) in Jurkat cell line lysates (35ug/lane). PTAR1 (arrow) was detected using the purified Pab.



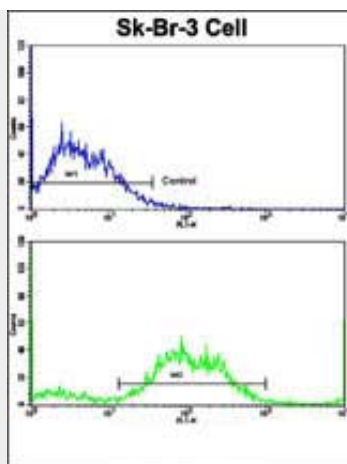
Western blot analysis of PTAR1 Antibody (Center) (Cat. #AP8622c) in MDA-MB231 cell line lysates (35ug/lane). PTAR1 (arrow) was detected using the purified Pab.



Anti-PTAR1 Antibody (Center) at 1:1000 dilution + CCRF-CEM whole cell lysate Lysates/proteins at 20 µg per lane. Secondary Goat Anti-Rabbit IgG, (H+L), Peroxidase conjugated at 1/10000 dilution. Predicted band size : 46 kDa Blocking/Dilution buffer: 5% NFDM/TBST.



Formalin-fixed and paraffin-embedded human breast carcinoma with PTAR1 Antibody (Center), which was peroxidase-conjugated to the secondary antibody, followed by DAB staining. This data demonstrates the use of this antibody for immunohistochemistry; clinical relevance has not been evaluated.



Flow cytometric analysis of SK-Br-3 cells using PTAR1 Antibody (Center)(bottom histogram) compared to a negative control cell (top histogram). FITC-conjugated goat-anti-rabbit secondary antibodies were used for the analysis.

PTAR1 Antibody (Center) - References

Oh,J.H., et.al., Mamm. Genome 16 (12), 942-954 (2005)