

ESRRA Antibody (Center)
Affinity Purified Rabbit Polyclonal Antibody (Pab)
Catalog # AP8635c**Specification**

ESRRA Antibody (Center) - Product Information

Application	IF, WB, IHC-P, FC,E
Primary Accession	P11474
Other Accession	P62510 , P62509 , P62508 , P11475 , Q61539 , O95718 , Q5QJV7 , O08580
Reactivity	Human
Predicted	Mouse, Rat
Host	Rabbit
Clonality	Polyclonal
Isotype	Rabbit IgG
Antigen Region	131-159

ESRRA Antibody (Center) - Additional Information**Gene ID** 2101**Other Names**

Steroid hormone receptor ERR1, Estrogen receptor-like 1, Estrogen-related receptor alpha, ERR-alpha, Nuclear receptor subfamily 3 group B member 1, ESRRA, ERR1, ESRL1, NR3B1

Target/Specificity

This ESRRA antibody is generated from rabbits immunized with a KLH conjugated synthetic peptide between 131-159 amino acids from the Central region of human ESRRA.

Dilution

IF~~1:10~50
WB~~1:1000
IHC-P~~1:50~100
FC~~1:10~50

Format

Purified polyclonal antibody supplied in PBS with 0.09% (W/V) sodium azide. This antibody is purified through a protein A column, followed by peptide affinity purification.

Storage

Maintain refrigerated at 2-8°C for up to 2 weeks. For long term storage store at -20°C in small aliquots to prevent freeze-thaw cycles.

Precautions

ESRRA Antibody (Center) is for research use only and not for use in diagnostic or therapeutic procedures.

ESRRA Antibody (Center) - Protein Information

Name ESRRA

Synonyms ERR1, ESRL1, NR3B1

Function Binds to an ERR-alpha response element (ERRE) containing a single consensus half-site, 5'-TNAAGGTCA-3'. Can bind to the medium- chain acyl coenzyme A dehydrogenase (MCAD) response element NRRE-1 and may act as an important regulator of MCAD promoter. Binds to the C1 region of the lactoferrin gene promoter. Requires dimerization and the coactivator, PGC-1A, for full activity. The ERRalpha/PGC1alpha complex is a regulator of energy metabolism. Induces the expression of PERM1 in the skeletal muscle.

Cellular Location

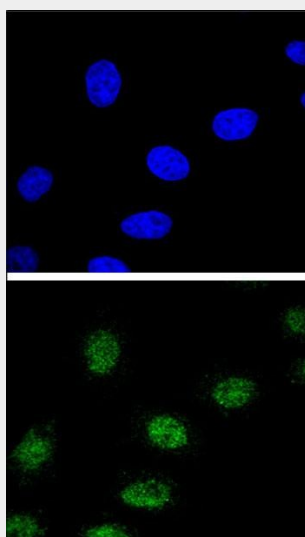
Nucleus {ECO:0000255|PROSITE-ProRule:PRU00407, ECO:0000269|PubMed:18063693, ECO:0000269|PubMed:21190936}. Cytoplasm. Note=Co-localizes to the cytoplasm only in presence of MAPK15.

ESRRA Antibody (Center) - Protocols

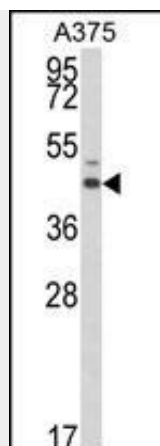
Provided below are standard protocols that you may find useful for product applications.

- [Western Blot](#)
- [Blocking Peptides](#)
- [Dot Blot](#)
- [Immunohistochemistry](#)
- [Immunofluorescence](#)
- [Immunoprecipitation](#)
- [Flow Cytometry](#)
- [Cell Culture](#)

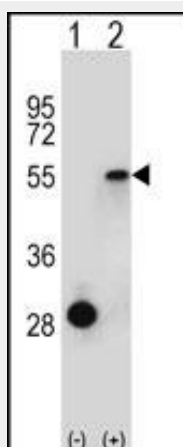
ESRRA Antibody (Center) - Images



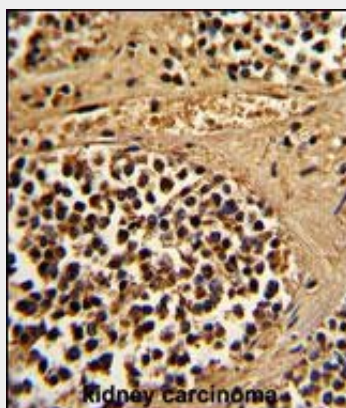
Confocal immunofluorescent analysis of ESRRA Antibody (Center) (Cat. #AP8635c) with 293 cell followed by Alexa Fluor® 488-conjugated goat anti-rabbit IgG (green). DAPI was used to stain the cell nuclear (blue).



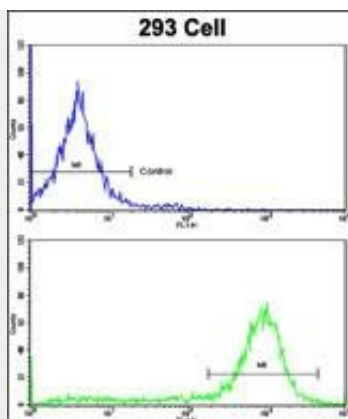
Western blot analysis of ESRRA Antibody (Center) (Cat. #AP8635c) in A375 cell line lysates (35ug/lane). ESRRA (arrow) was detected using the purified Pab.



Western blot analysis of ESRRA (arrow) using rabbit polyclonal ESRRA Antibody (Center) (Cat. #AP8635c). 293 cell lysates (2 ug/lane) either nontransfected (Lane 1) or transiently transfected (Lane 2) with the ESRRA gene.



Formalin-fixed and paraffin-embedded human kidney carcinoma reacted with ESRRA Antibody (Center), which was peroxidase-conjugated to the secondary antibody, followed by DAB staining. This data demonstrates the use of this antibody for immunohistochemistry; clinical relevance has not been evaluated.



Flow cytometric analysis of 293 cells using ESRRA Antibody (Center)(bottom histogram) compared to a negative control cell (top histogram). FITC-conjugated goat-anti-rabbit secondary antibodies were used for the analysis.

ESRRA Antibody (Center) - Background

ESRRA is a nuclear receptor that is closely related to the estrogen receptor. This protein acts as a site-specific transcription regulator and has been also shown to interact with estrogen and the transcription factor TFIIB by direct protein-protein contact. The binding and regulatory activities of this protein have been demonstrated in the regulation of a variety of genes including lactoferrin, osteopontin, medium-chain acyl coenzyme A dehydrogenase (MCAD) and thyroid hormone receptor genes.

ESRRA Antibody (Center) - References

Yang,N., et.al., J. Biol. Chem. 271 (10), 5795-5804 (1996)
Wiley,S.R., et.al., Genes Dev. 7 (11), 2206-2219 (1993)