

CYP2A13 Antibody (C-term)
Purified Rabbit Polyclonal Antibody (Pab)
Catalog # AP8649b**Specification**

CYP2A13 Antibody (C-term) - Product Information

Application	WB, IHC-P, FC,E
Primary Accession	Q16696
Reactivity	Human
Host	Rabbit
Clonality	Polyclonal
Isotype	Rabbit IgG
Calculated MW	56688
Antigen Region	446-477

CYP2A13 Antibody (C-term) - Additional Information**Gene ID** 1553**Other Names**

Cytochrome P450 2A13, CYP11A13, CYP2A13

Target/Specificity

This CYP2A13 antibody is generated from rabbits immunized with a KLH conjugated synthetic peptide between 446-477 amino acids from the C-terminal region of human CYP2A13.

Dilution

WB~~1:1000
IHC-P~~1:50~100
FC~~1:10~50

Format

Purified polyclonal antibody supplied in PBS with 0.09% (W/V) sodium azide. This antibody is prepared by Saturated Ammonium Sulfate (SAS) precipitation followed by dialysis against PBS.

Storage

Maintain refrigerated at 2-8°C for up to 2 weeks. For long term storage store at -20°C in small aliquots to prevent freeze-thaw cycles.

Precautions

CYP2A13 Antibody (C-term) is for research use only and not for use in diagnostic or therapeutic procedures.

CYP2A13 Antibody (C-term) - Protein Information**Name** CYP2A13**Function** Exhibits a coumarin 7-hydroxylase activity. Active in the metabolic activation of

hexamethylphosphoramide, N,N-dimethylaniline, 2'-methoxyacetophenone, N-nitrosomethylphenylamine, and the tobacco- specific carcinogen, 4-(methylnitrosamino)-1-(3-pyridyl)-1-butanone. Possesses phenacetin O-deethylation activity.

Cellular Location

Endoplasmic reticulum membrane; Peripheral membrane protein. Microsome membrane; Peripheral membrane protein

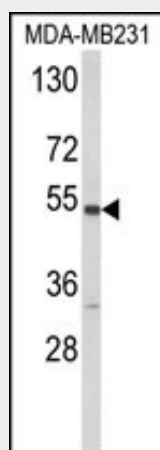
Tissue Location

Expressed in liver and a number of extrahepatic tissues, including nasal mucosa, lung, trachea, brain, mammary gland, prostate, testis, and uterus, but not in heart, kidney, bone marrow, colon, small intestine, spleen, stomach, thymus, or skeletal muscle

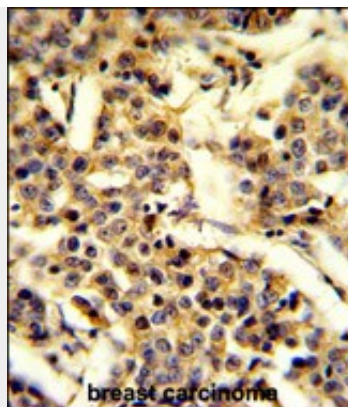
CYP2A13 Antibody (C-term) - Protocols

Provided below are standard protocols that you may find useful for product applications.

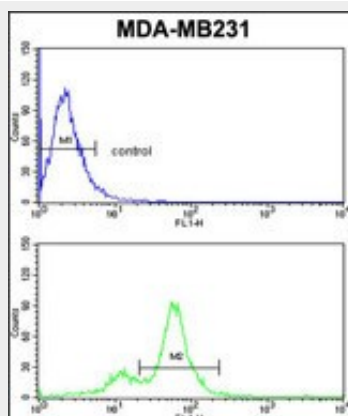
- [Western Blot](#)
- [Blocking Peptides](#)
- [Dot Blot](#)
- [Immunohistochemistry](#)
- [Immunofluorescence](#)
- [Immunoprecipitation](#)
- [Flow Cytometry](#)
- [Cell Culture](#)

CYP2A13 Antibody (C-term) - Images

Western blot analysis of CYP2A13 Antibody (C-term) (Cat. #AP8649b) in MDA-MB231 cell line lysates (35ug/lane). CYP2A13 (arrow) was detected using the purified Pab.



Formalin-fixed and paraffin-embedded human breast carcinoma reacted with CYP2A13 Antibody (C-term), which was peroxidase-conjugated to the secondary antibody, followed by DAB staining. This data demonstrates the use of this antibody for immunohistochemistry; clinical relevance has not been evaluated.



CYP2A13 Antibody (C-term) (Cat. #AP8649b) flow cytometric analysis of MDA-MB231 cells (bottom histogram) compared to a negative control cell (top histogram). FITC-conjugated goat-anti-rabbit secondary antibodies were used for the analysis.

CYP2A13 Antibody (C-term) - Background

CYP2A13 is a member of the cytochrome P450 superfamily of enzymes. The cytochrome P450 proteins are monooxygenases which catalyze many reactions involved in drug metabolism and synthesis of cholesterol, steroids and other lipids. This protein localizes to the endoplasmic reticulum. Although its endogenous substrate has not been determined, it is known to metabolize 4-(methylnitrosamino)-1-(3-pyridyl)-1-butanone, a major nitrosamine specific to tobacco.

CYP2A13 Antibody (C-term) - References

Smith, G., et.al., *Xenobiotica* 28 (12), 1129-1165 (1998)
Nelson, D.R., et.al., *Pharmacogenetics* 14 (1), 1-18 (2004)