

Beclin1-BH3 Domain Antibody
Affinity Purified Rabbit Polyclonal Antibody (Pab)
Catalog # AP8653a**Specification**

Beclin1-BH3 Domain Antibody - Product Information

Application	WB, IHC-P, FC,E
Primary Accession	Q14457
Other Accession	Q6GP52 , Q91XJ1 , Q4A1L5 , O88597 , Q5ZKS6 , Q4A1L4
Reactivity	Human, Mouse
Predicted	Bovine, Chicken, Pig, Rat, Xenopus
Host	Rabbit
Clonality	Polyclonal
Isotype	Rabbit IgG
Calculated MW	51896
Antigen Region	95-132

Beclin1-BH3 Domain Antibody - Additional Information**Gene ID** 8678**Other Names**

Beclin-1, Coiled-coil myosin-like BCL2-interacting protein, Protein GT197, BECN1, GT197

Target/Specificity

This Beclin1 antibody is generated from rabbits immunized with a KLH conjugated synthetic peptide between 95-132 amino acids from human Beclin1.

Dilution

WB~~1:1000
IHC-P~~1:50~100
FC~~1:10~50

Format

Purified polyclonal antibody supplied in PBS with 0.09% (W/V) sodium azide. This antibody is purified through a protein A column, followed by peptide affinity purification.

Storage

Maintain refrigerated at 2-8°C for up to 2 weeks. For long term storage store at -20°C in small aliquots to prevent freeze-thaw cycles.

Precautions

Beclin1-BH3 Domain Antibody is for research use only and not for use in diagnostic or therapeutic procedures.

Beclin1-BH3 Domain Antibody - Protein Information

Name BECN1**Synonyms** GT197

Function Plays a central role in autophagy (PubMed:[18570871](#), PubMed:[21358617](#), PubMed:[23184933](#), PubMed:[23974797](#), PubMed:[28445460](#), PubMed:[25484083](#), PubMed:[37776275](#)). Acts as a core subunit of the PI3K complex that mediates formation of phosphatidylinositol 3-phosphate; different complex forms are believed to play a role in multiple membrane trafficking pathways: PI3KC3-C1 is involved in initiation of autophagosomes and PI3KC3-C2 in maturation of autophagosomes and endocytosis. Involved in regulation of degradative endocytic trafficking and required for the abscission step in cytokinesis, probably in the context of PI3KC3-C2 (PubMed:[20643123](#), PubMed:[20208530](#), PubMed:[23974797](#), PubMed:[26783301](#)). Essential for the formation of PI3KC3-C2 but not PI3KC3-C1 PI3K complex forms. Involved in endocytosis (PubMed:[25275521](#)). Protects against infection by a neurovirulent strain of Sindbis virus (PubMed:[9765397](#)). May play a role in antiviral host defense.

Cellular Location

Cytoplasm. Golgi apparatus, trans-Golgi network membrane; Peripheral membrane protein. Endosome membrane; Peripheral membrane protein. Endoplasmic reticulum membrane; Peripheral membrane protein. Mitochondrion membrane; Peripheral membrane protein. Endosome {ECO:0000250|UniProtKB:O88597} Cytoplasmic vesicle, autophagosome. Note=Interaction with ATG14 promotes translocation to autophagosomes. Expressed in dendrites and cell bodies of cerebellar Purkinje cells (By similarity) {ECO:0000250|UniProtKB:O88597, ECO:0000269|PubMed:19050071} [Beclin-1-C 37 kDa]: Mitochondrion {ECO:0000250|UniProtKB:O88597}

Tissue Location

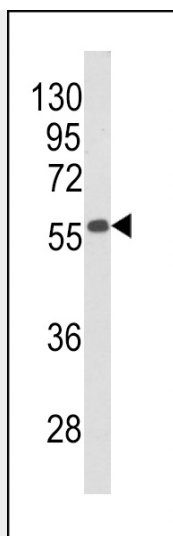
Ubiquitous.

Beclin1-BH3 Domain Antibody - Protocols

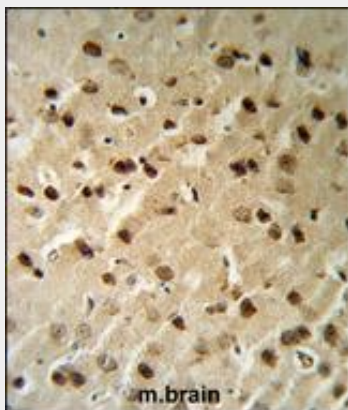
Provided below are standard protocols that you may find useful for product applications.

- [Western Blot](#)
- [Blocking Peptides](#)
- [Dot Blot](#)
- [Immunohistochemistry](#)
- [Immunofluorescence](#)
- [Immunoprecipitation](#)
- [Flow Cytometry](#)
- [Cell Culture](#)

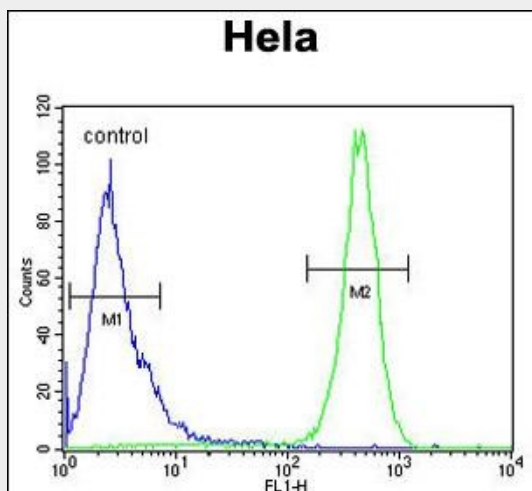
Beclin1-BH3 Domain Antibody - Images



Western blot analysis of Beclin1-BH3 Domain Antibody (Cat. #AP8653a) in mouse stomach tissue lysates (35ug/lane). BECN1 (arrow) was detected using the purified Pab.



Beclin1-BH3 Domain Antibody (Cat. #AP8653a) IHC analysis in formalin fixed and paraffin embedded mouse brain tissue followed by peroxidase conjugation of the secondary antibody and DAB staining. This data demonstrates the use of the Beclin1-BH3 Domain Antibody for immunohistochemistry. Clinical relevance has not been evaluated.



Beclin1-BH3 Domain Antibody (Cat. #AP8653a) flow cytometric analysis of HeLa cells (right histogram) compared to a negative control cell (left histogram). FITC-conjugated goat-anti-rabbit secondary antibodies were used for the analysis.

Beclin1-BH3 Domain Antibody - Background

Beclin1-BH3 plays a central role in autophagy (By similarity). It may play a role in antiviral host defense. Protects against infection by a neurovirulent strain of Sindbis virus.

Beclin1-BH3 Domain Antibody - References

Won,K.Y., et.al., Hum. Pathol. 41 (1), 107-112 (2010) Oberstein,A., et.al., J. Biol. Chem. 282 (17), 13123-13132 (2007)