

TARSL2 Antibody (C-term)
Affinity Purified Rabbit Polyclonal Antibody (Pab)
Catalog # AP8654b**Specification**

TARSL2 Antibody (C-term) - Product Information

Application	WB, IHC-P, FC,E
Primary Accession	A2RTX5
Reactivity	Human
Host	Rabbit
Clonality	Polyclonal
Isotype	Rabbit IgG
Calculated MW	92646
Antigen Region	638-665

TARSL2 Antibody (C-term) - Additional Information**Gene ID** 123283**Other Names**

Probable threonine--tRNA ligase 2, cytoplasmic, Threonyl-tRNA synthetase, ThrRS, Threonyl-tRNA synthetase-like protein 2, TARSL2

Target/Specificity

This TARSL2 antibody is generated from rabbits immunized with a KLH conjugated synthetic peptide between 638-665 amino acids from the C-terminal region of human TARSL2.

Dilution

WB~~1:1000
IHC-P~~1:50~100
FC~~1:10~50

Format

Purified polyclonal antibody supplied in PBS with 0.09% (W/V) sodium azide. This antibody is purified through a protein A column, followed by peptide affinity purification.

Storage

Maintain refrigerated at 2-8°C for up to 2 weeks. For long term storage store at -20°C in small aliquots to prevent freeze-thaw cycles.

Precautions

TARSL2 Antibody (C-term) is for research use only and not for use in diagnostic or therapeutic procedures.

TARSL2 Antibody (C-term) - Protein Information**Name** TARSL2 ([HGNC:24728](#))

Synonyms TARSL2

Function Catalyzes the attachment of threonine to tRNA(Thr) in a two- step reaction: threonine is first activated by ATP to form Thr-AMP and then transferred to the acceptor end of tRNA(Thr). Also edits incorrectly charged tRNA(Thr) via its editing domain, at the post- transfer stage.

Cellular Location

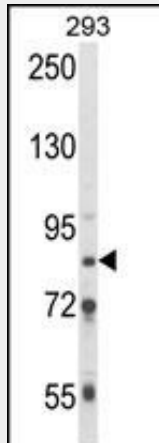
Cytoplasm {ECO:0000250|UniProtKB:Q8BLY2}. Nucleus {ECO:0000250|UniProtKB:Q8BLY2}.
Note=Primarily cytoplasmic. Also detected at lower levels in the nucleus
{ECO:0000250|UniProtKB:Q8BLY2}

TARSL2 Antibody (C-term) - Protocols

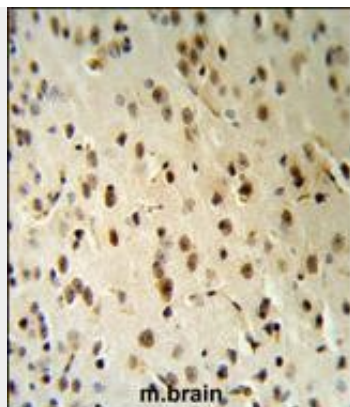
Provided below are standard protocols that you may find useful for product applications.

- [Western Blot](#)
- [Blocking Peptides](#)
- [Dot Blot](#)
- [Immunohistochemistry](#)
- [Immunofluorescence](#)
- [Immunoprecipitation](#)
- [Flow Cytometry](#)
- [Cell Culture](#)

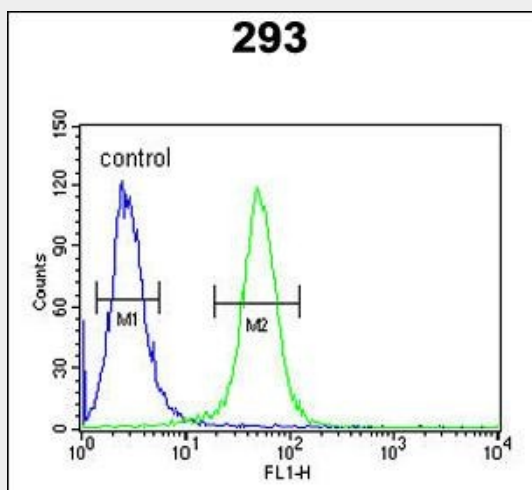
TARSL2 Antibody (C-term) - Images



Western blot analysis of TARSL2 Antibody (C-term) (Cat. #AP8654b) in 293 cell line lysates (35ug/lane). TARSL2 (arrow) was detected using the purified Pab.



TARSL2 Antibody (C-term) (RB19649) IHC analysis in formalin fixed and paraffin embedded human brain tissue followed by peroxidase conjugation of the secondary antibody and DAB staining. This data demonstrates the use of the TARSL2 Antibody (C-term) for immunohistochemistry. Clinical relevance has not been evaluated.



TARSL2 Antibody (C-term) (Cat. #AP8654b) flow cytometric analysis of 293 cells (right histogram) compared to a negative control cell (left histogram). FITC-conjugated goat-anti-rabbit secondary antibodies were used for the analysis.