

PECI Antibody (C-term)
Affinity Purified Rabbit Polyclonal Antibody (Pab)
Catalog # AP8692b

Specification

PECI Antibody (C-term) - Product Information

Application	WB, IHC-P, FC,E
Primary Accession	O75521
Reactivity	Human
Host	Rabbit
Clonality	Polyclonal
Isotype	Rabbit IgG
Calculated MW	43585
Antigen Region	331-358

PECI Antibody (C-term) - Additional Information

Gene ID 10455

Other Names

Enoyl-CoA delta isomerase 2, mitochondrial, DRS-1, Delta(3), delta(2)-enoyl-CoA isomerase, D3, D2-enoyl-CoA isomerase, Diazepam-binding inhibitor-related protein 1, DBI-related protein 1, Dodecenoyl-CoA isomerase, Hepatocellular carcinoma-associated antigen 88, Peroxisomal 3, 2-trans-enoyl-CoA isomerase, pECI, Renal carcinoma antigen NY-REN-1, ECI2, DRS1, HCA88, PECI

Target/Specificity

This PECI antibody is generated from rabbits immunized with a KLH conjugated synthetic peptide between 331-358 amino acids from the C-terminal region of human PECI.

Dilution

WB~~1:1000
IHC-P~~1:50~100
FC~~1:10~50

Format

Purified polyclonal antibody supplied in PBS with 0.09% (W/V) sodium azide. This antibody is purified through a protein A column, followed by peptide affinity purification.

Storage

Maintain refrigerated at 2-8°C for up to 2 weeks. For long term storage store at -20°C in small aliquots to prevent freeze-thaw cycles.

Precautions

PECI Antibody (C-term) is for research use only and not for use in diagnostic or therapeutic procedures.

PECI Antibody (C-term) - Protein Information

Name ECI2

Synonyms DRS1, HCA88, Peci {ECO:0000303|PubMed:10

Function Able to isomerize both 3-cis and 3-trans double bonds into the 2-trans form in a range of enoyl-CoA species. Has a preference for 3-trans substrates.

Cellular Location

[Isoform 1]: Mitochondrion {ECO:0000250|UniProtKB:Q5XIC0}

Tissue Location

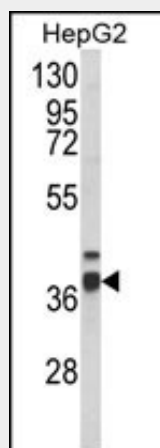
Abundant in heart, skeletal muscle and liver. Expressed in CD34(+) T-cells and CD34(+) bone marrow cells

PECI Antibody (C-term) - Protocols

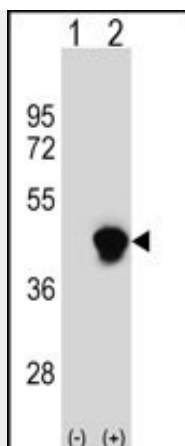
Provided below are standard protocols that you may find useful for product applications.

- [Western Blot](#)
- [Blocking Peptides](#)
- [Dot Blot](#)
- [Immunohistochemistry](#)
- [Immunofluorescence](#)
- [Immunoprecipitation](#)
- [Flow Cytometry](#)
- [Cell Culture](#)

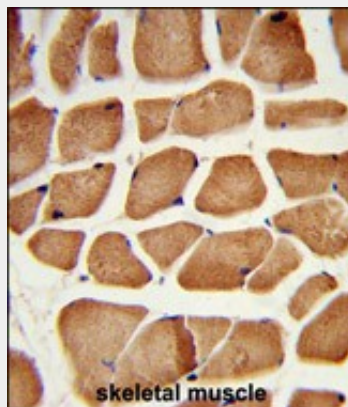
PECI Antibody (C-term) - Images



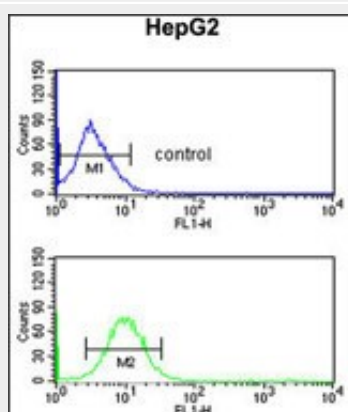
Western blot analysis of Peci Antibody (C-term) (Cat. #AP8692b) in HepG2 cell line lysates (35ug/lane).Peci (arrow) was detected using the purified Pab.



Western blot analysis of Peci (arrow) using rabbit polyclonal Peci Antibody (C-term) (Cat. #AP8692b). 293 cell lysates (2 ug/lane) either nontransfected (Lane 1) or transiently transfected (Lane 2) with the Peci gene.



Formalin-fixed and paraffin-embedded human skeletal muscle reacted with Peci Antibody (C-term), which was peroxidase-conjugated to the secondary antibody, followed by DAB staining. This data demonstrates the use of this antibody for immunohistochemistry; clinical relevance has not been evaluated.



Peci Antibody (C-term) (Cat. #AP8692b) flow cytometric analysis of HepG2 cells (bottom histogram) compared to a negative control cell (top histogram). FITC-conjugated goat-anti-rabbit secondary antibodies were used for the analysis.

Peci Antibody (C-term) - Background

Peci is an auxiliary enzyme that catalyzes an isomerization step required for the beta-oxidation of

unsaturated fatty acids.

PECI Antibody (C-term) - References

Scanlan, M.J., et.al., Int. J. Cancer 83 (4), 456-464 (1999)

Suk, K., et.al., Biochim. Biophys. Acta 1454 (1), 126-131 (1999)