

**ALDH3B1 Antibody (Center)**  
**Affinity Purified Rabbit Polyclonal Antibody (Pab)**  
**Catalog # AP8706C****Specification**

---

**ALDH3B1 Antibody (Center) - Product Information**

Application	WB, IHC-P,E
Primary Accession	<a href="#">P43353</a>
Other Accession	<a href="#">Q5XI42</a> , <a href="#">E9Q3E1</a>
Reactivity	Human
Predicted	Rat, Mouse
Host	Rabbit
Clonality	Polyclonal
Isotype	Rabbit IgG
Antigen Region	334-360

**ALDH3B1 Antibody (Center) - Additional Information****Gene ID** 221**Other Names**

Aldehyde dehydrogenase family 3 member B1, Aldehyde dehydrogenase 7, ALDH3B1, ALDH7

**Target/Specificity**

This ALDH3B1 antibody is generated from rabbits immunized with a KLH conjugated synthetic peptide between 334-360 amino acids from the Central region of human ALDH3B1.

**Dilution**

WB~~1:1000

IHC-P~~1:10~50

**Format**

Purified polyclonal antibody supplied in PBS with 0.09% (W/V) sodium azide. This antibody is purified through a protein A column, followed by peptide affinity purification.

**Storage**

Maintain refrigerated at 2-8°C for up to 2 weeks. For long term storage store at -20°C in small aliquots to prevent freeze-thaw cycles.

**Precautions**

ALDH3B1 Antibody (Center) is for research use only and not for use in diagnostic or therapeutic procedures.

**ALDH3B1 Antibody (Center) - Protein Information****Name** ALDH3B1**Synonyms** ALDH7

**Function** Oxidizes medium and long chain saturated and unsaturated aldehydes (PubMed:[17382292](#), PubMed:[23721920](#)). Metabolizes also benzaldehyde (PubMed:[17382292](#)). Low activity towards acetaldehyde and 3,4-dihydroxyphenylacetaldehyde (PubMed:[17382292](#), PubMed:[23721920](#)). May not metabolize short chain aldehydes. Can use both NADP(+) and NAD(+) as electron acceptor (PubMed:[17382292](#)). May have a protective role against the cytotoxicity induced by lipid peroxidation (PubMed:[17382292](#)).

**Cellular Location**

Cell membrane; Lipid-anchor. Note=Primarily in the plasma membrane as well as in some punctate structures in the cytoplasm

**Tissue Location**

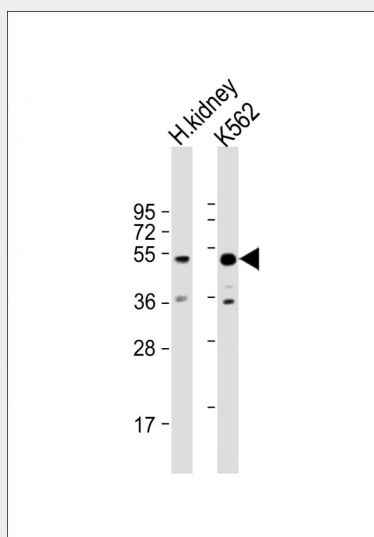
Highest expression in kidney and lung.

**ALDH3B1 Antibody (Center) - Protocols**

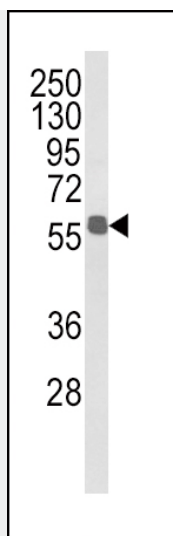
Provided below are standard protocols that you may find useful for product applications.

- [Western Blot](#)
- [Blocking Peptides](#)
- [Dot Blot](#)
- [Immunohistochemistry](#)
- [Immunofluorescence](#)
- [Immunoprecipitation](#)
- [Flow Cytometry](#)
- [Cell Culture](#)

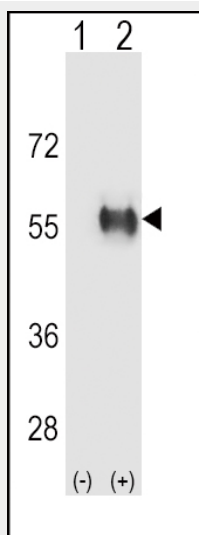
**ALDH3B1 Antibody (Center) - Images**



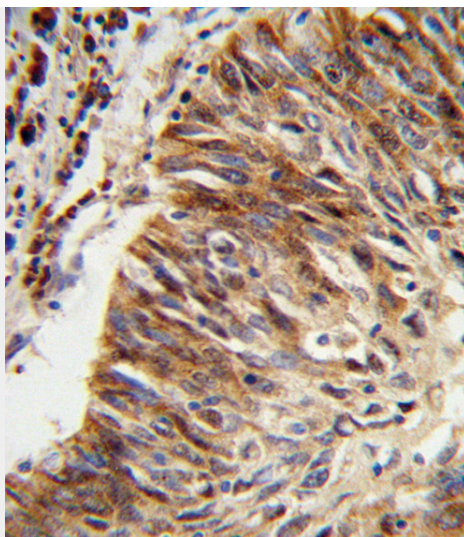
All lanes : Anti-ALDH3B1 Antibody (Center) at 1:1000 dilution Lane 1: human kidney lysate Lane 2: K562 whole cell lysate Lysates/proteins at 20 µg per lane. Secondary Goat Anti-Rabbit IgG, (H+L), Peroxidase conjugated at 1/10000 dilution. Predicted band size : 52 kDa Blocking/Dilution buffer: 5% NFDM/TBST.



Western blot analysis of ALDH3B1 Antibody (Center) (Cat. #AP8706c) in MDA-MB231 cell line lysates (35ug/lane). ALDH3B1 (arrow) was detected using the purified Pab.



Western blot analysis of ALDH3B1 (arrow) using rabbit polyclonal ALDH3B1 Antibody (Center) (Cat. #AP8706c). 293 cell lysates (2 ug/lane) either nontransfected (Lane 1) or transiently transfected (Lane 2) with the ALDH3B1 gene.



Formalin-fixed and paraffin-embedded human lung carcinoma reacted with ALDH3B1 Antibody (Center), which was peroxidase-conjugated to the secondary antibody, followed by DAB staining. This data demonstrates the use of this antibody for immunohistochemistry; clinical relevance has not been evaluated.

#### **ALDH3B1 Antibody (Center) - Background**

The aldehyde dehydrogenases are a family of isozymes that may play a major role in the detoxification of aldehydes generated by alcohol metabolism and lipid peroxidation.

#### **ALDH3B1 Antibody (Center) - References**

Marchitti, S.A., et.al., Biochem. Biophys. Res. Commun. 356 (3), 792-798 (2007)

#### **ALDH3B1 Antibody (Center) - Citations**

- [Aldehyde dehydrogenases contribute to skeletal muscle homeostasis in healthy, aging, and Duchenne muscular dystrophy patients](#)