

**CD24 Antibody (N-Term)**  
**Affinity Purified Rabbit Polyclonal Antibody (Pab)**  
**Catalog # AP8782a****Specification**

---

**CD24 Antibody (N-Term) - Product Information**

Application	WB, IHC-P, FC,E
Primary Accession	<a href="#">P25063</a>
Other Accession	<a href="#">P24807</a> , <a href="#">NP_037362</a>
Reactivity	Human
Predicted	Mouse
Host	Rabbit
Clonality	Polyclonal
Isotype	Rabbit IgG
Antigen Region	1-30

**CD24 Antibody (N-Term) - Additional Information****Gene ID** 100133941**Other Names**

Signal transducer CD24, Small cell lung carcinoma cluster 4 antigen, CD24, CD24, CD24A

**Target/Specificity**

This CD24 antibody is generated from rabbits immunized with a KLH conjugated synthetic peptide between 1-30 amino acids from the N-terminal region of human CD24.

**Dilution**

WB~~1:1000  
IHC-P~~1:50~100  
FC~~1:10~50

**Format**

Purified polyclonal antibody supplied in PBS with 0.09% (W/V) sodium azide. This antibody is purified through a protein A column, followed by peptide affinity purification.

**Storage**

Maintain refrigerated at 2-8°C for up to 2 weeks. For long term storage store at -20°C in small aliquots to prevent freeze-thaw cycles.

**Precautions**

CD24 Antibody (N-Term) is for research use only and not for use in diagnostic or therapeutic procedures.

**CD24 Antibody (N-Term) - Protein Information****Name** CD24

## Synonyms CD24A

**Function** May have a pivotal role in cell differentiation of different cell types. Signaling could be triggered by the binding of a lectin- like ligand to the CD24 carbohydrates, and transduced by the release of second messengers derived from the GPI-anchor. Modulates B-cell activation responses. Promotes AG-dependent proliferation of B-cells, and prevents their terminal differentiation into antibody-forming cells (PubMed:[11313396](#)). In association with SIGLEC10 may be involved in the selective suppression of the immune response to danger-associated molecular patterns (DAMPs) such as HMGB1, HSP70 and HSP90. Plays a role in the control of autoimmunity (By similarity).

## Cellular Location

Cell membrane; Lipid-anchor, GPI-anchor.

## Tissue Location

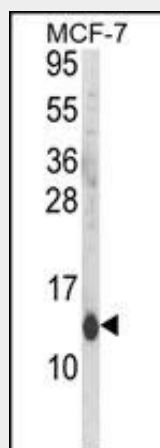
B-cells. Expressed in a number of B-cell lines including P32/ISH and Namalwa. Expressed in erythroleukemia cell and small cell lung carcinoma cell lines. Also expressed on the surface of T-cells.

## CD24 Antibody (N-Term) - Protocols

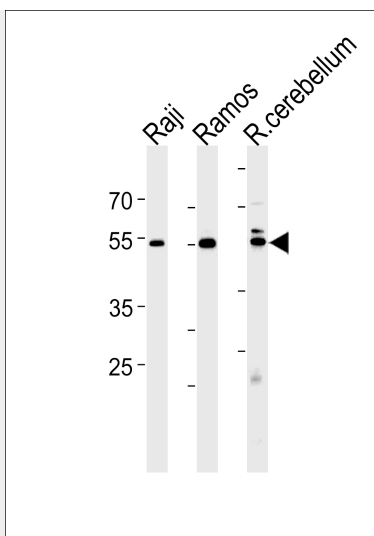
Provided below are standard protocols that you may find useful for product applications.

- [Western Blot](#)
- [Blocking Peptides](#)
- [Dot Blot](#)
- [Immunohistochemistry](#)
- [Immunofluorescence](#)
- [Immunoprecipitation](#)
- [Flow Cytometry](#)
- [Cell Culture](#)

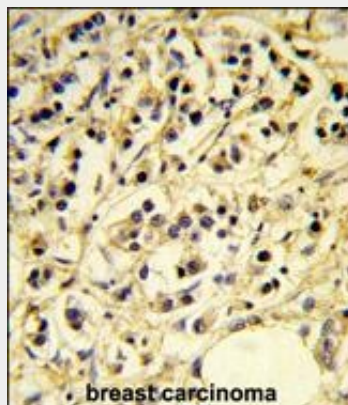
## CD24 Antibody (N-Term) - Images



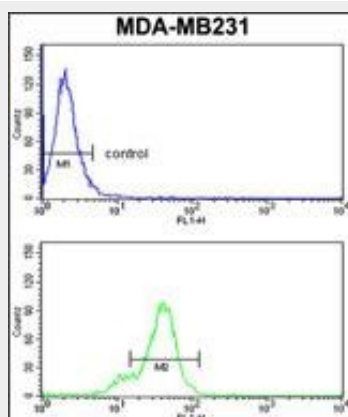
Western blot analysis of CD24 Antibody (N-Term) (Cat. #AP8782a) in MCF-7 cell line lysates (35ug/lane). CD24 (arrow) was detected using the purified Pab.



CD24 Antibody (N-Term) (Cat.# AP8782a) western blot analysis in Raji,Ramos cell line and rat cerebellum tissue lysates (35ug/lane).This demonstrates the CD24 antibody detected the CD24 protein (arrow).



Formalin-fixed and paraffin-embedded human breast carcinoma reacted with CD24 Antibody (N-Term), which was peroxidase-conjugated to the secondary antibody, followed by DAB staining. This data demonstrates the use of this antibody for immunohistochemistry; clinical relevance has not been evaluated.



CD24 Antibody (N-Term) (Cat.#AP8782a) flow cytometry analysis of MDA-MB231 cells (bottom histogram) compared to a negative control cell (top histogram). FITC-conjugated goat-anti-rabbit secondary antibodies were used for the analysis.

#### CD24 Antibody (N-Term) - Background

CD24 is a sialoglycoprotein that is expressed on mature granulocytes and in many B cells. This protein is anchored via a glycosyl phosphatidylinositol (GPI) link to the cell surface.

**CD24 Antibody (N-Term) - References**

Kay,R., et.al., J. Immunol. 147 (4), 1412-1416 (1991)