

**XPA Antibody (C-term)**  
**Affinity Purified Rabbit Polyclonal Antibody (Pab)**  
**Catalog # AP8784b****Specification**

---

**XPA Antibody (C-term) - Product Information**

Application	WB, IHC-P, FC,E
Primary Accession	<a href="#">P23025</a>
Reactivity	Human
Host	Rabbit
Clonality	Polyclonal
Isotype	Rabbit IgG
Calculated MW	31368
Antigen Region	221-250

**XPA Antibody (C-term) - Additional Information****Gene ID** 7507**Other Names**

DNA repair protein complementing XP-A cells, Xeroderma pigmentosum group A-complementing protein, XPA, XPAC

**Target/Specificity**

This XPA antibody is generated from rabbits immunized with a KLH conjugated synthetic peptide between 221-250 amino acids from the C-terminal region of human XPA.

**Dilution**

WB~~1:1000  
IHC-P~~1:50~100  
FC~~1:10~50

**Format**

Purified polyclonal antibody supplied in PBS with 0.09% (W/V) sodium azide. This antibody is purified through a protein A column, followed by peptide affinity purification.

**Storage**

Maintain refrigerated at 2-8°C for up to 2 weeks. For long term storage store at -20°C in small aliquots to prevent freeze-thaw cycles.

**Precautions**

XPA Antibody (C-term) is for research use only and not for use in diagnostic or therapeutic procedures.

**XPA Antibody (C-term) - Protein Information****Name** XPA

### Synonyms XPAC

**Function** Involved in DNA excision repair. Initiates repair by binding to damaged sites with various affinities, depending on the photoproduct and the transcriptional state of the region. Required for UV-induced CHEK1 phosphorylation and the recruitment of CEP164 to cyclobutane pyrimidine dimers (CPD), sites of DNA damage after UV irradiation.

### Cellular Location

Nucleus

### Tissue Location

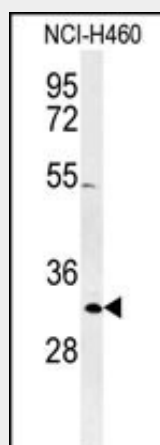
Expressed in various cell lines and in skin fibroblasts.

### XPA Antibody (C-term) - Protocols

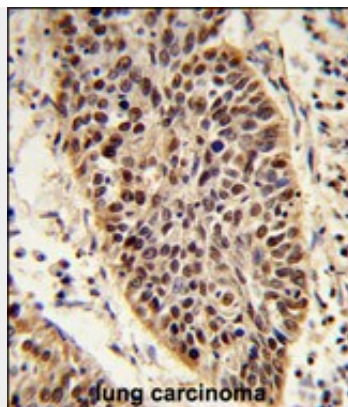
Provided below are standard protocols that you may find useful for product applications.

- [Western Blot](#)
- [Blocking Peptides](#)
- [Dot Blot](#)
- [Immunohistochemistry](#)
- [Immunofluorescence](#)
- [Immunoprecipitation](#)
- [Flow Cytometry](#)
- [Cell Culture](#)

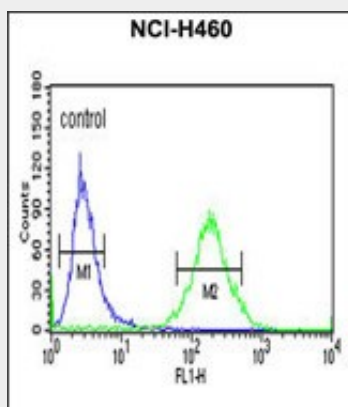
### XPA Antibody (C-term) - Images



Western blot analysis of XPA Antibody (C-term) (Cat. #AP8784b) in NCI-H460 cell line lysates (35ug/lane). XPA (arrow) was detected using the purified Pab.



Formalin-fixed and paraffin-embedded human lung carcinoma reacted with XPA Antibody (C-term), which was peroxidase-conjugated to the secondary antibody, followed by DAB staining. This data demonstrates the use of this antibody for immunohistochemistry; clinical relevance has not been evaluated.



XPA Antibody (C-term) (Cat. #AP8784b) flow cytometric analysis of NCI-H460 cells (right histogram) compared to a negative control cell (left histogram). FITC-conjugated goat-anti-rabbit secondary antibodies were used for the analysis.

#### **XPA Antibody (C-term) - Background**

XPA is involved in DNA excision repair. It initiates repair by binding to damaged sites with various affinities, depending on the photoproduct and the transcriptional state of the region. This protein is required for UV-induced CHK1 phosphorylation and the recruitment of CEP164 to cyclobutane pyrimidine dimers (CPD), sites of DNA damage after UV irradiation.

#### **XPA Antibody (C-term) - References**

States J.C., et.al., Hum. Mutat. 12:103-113(1998).