

**PTGER2 Antibody (Center)**  
**Affinity Purified Rabbit Polyclonal Antibody (Pab)**  
**Catalog # AP8862c**

**Specification**

---

**PTGER2 Antibody (Center) - Product Information**

Application	WB, FC,E
Primary Accession	<a href="#">P43116</a>
Reactivity	Human
Host	Rabbit
Clonality	Polyclonal
Isotype	Rabbit IgG
Calculated MW	39761
Antigen Region	118-147

**PTGER2 Antibody (Center) - Additional Information**

**Gene ID** 5732

**Other Names**

Prostaglandin E2 receptor EP2 subtype, PGE receptor EP2 subtype, PGE2 receptor EP2 subtype, Prostanoid EP2 receptor, PTGER2

**Target/Specificity**

This PTGER2 antibody is generated from rabbits immunized with a KLH conjugated synthetic peptide between 118-147 amino acids from the Central region of human PTGER2.

**Dilution**

WB~~1:1000

FC~~1:10~50

**Format**

Purified polyclonal antibody supplied in PBS with 0.09% (W/V) sodium azide. This antibody is purified through a protein A column, followed by peptide affinity purification.

**Storage**

Maintain refrigerated at 2-8°C for up to 2 weeks. For long term storage store at -20°C in small aliquots to prevent freeze-thaw cycles.

**Precautions**

PTGER2 Antibody (Center) is for research use only and not for use in diagnostic or therapeutic procedures.

**PTGER2 Antibody (Center) - Protein Information**

**Name** PTGER2

**Function** Receptor for prostaglandin E2 (PGE2). The activity of this receptor is mediated by G(s)

proteins that stimulate adenylate cyclase. The subsequent raise in intracellular cAMP is responsible for the relaxing effect of this receptor on smooth muscle.

**Cellular Location**

Cell membrane; Multi-pass membrane protein.

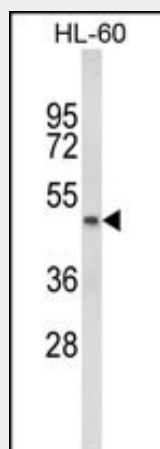
**Tissue Location**

Placenta and lung.

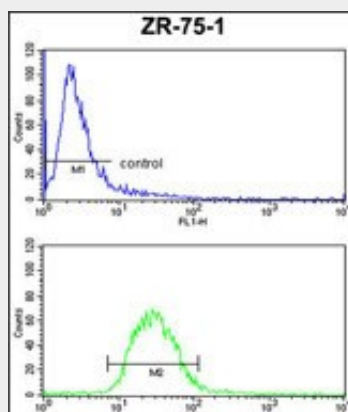
**PTGER2 Antibody (Center) - Protocols**

Provided below are standard protocols that you may find useful for product applications.

- [Western Blot](#)
- [Blocking Peptides](#)
- [Dot Blot](#)
- [Immunohistochemistry](#)
- [Immunofluorescence](#)
- [Immunoprecipitation](#)
- [Flow Cytometry](#)
- [Cell Culture](#)

**PTGER2 Antibody (Center) - Images**

Western blot analysis of PTGER2 Antibody (Center) (Cat. #AP8862c) in HL-60 cell line lysates (35ug/lane).PTGER2 (arrow) was detected using the purified Pab.



PTGER2 Antibody (Center) (Cat.#AP8862c) FC analysis of ZR-75-1 cells (bottom histogram) compared to a negative control cell (top histogram). FITC-conjugated goat-anti-rabbit secondary antibodies were used for the analysis.

#### **PTGER2 Antibody (Center) - Background**

PTGER2 is a receptor for prostaglandin E2, a metabolite of arachidonic acid which has different biologic activities in a wide range of tissues. Mutations in this gene are associated with aspirin-induced susceptibility to asthma.

#### **PTGER2 Antibody (Center) - References**

Sagana,R.L.,ET.AL., J. Biol. Chem. 284 (47), 32264-32271 (2009)