

CSRP2BP Antibody (Center)
Affinity Purified Rabbit Polyclonal Antibody (Pab)
Catalog # AP8865c

Specification

CSRP2BP Antibody (Center) - Product Information

Application	WB, IHC-P,E
Primary Accession	Q9H8E8
Other Accession	Q8CID0
Reactivity	Human, Mouse
Host	Rabbit
Clonality	Polyclonal
Isotype	Rabbit IgG
Antigen Region	246-275

CSRP2BP Antibody (Center) - Additional Information

Gene ID 57325

Other Names

Cysteine-rich protein 2-binding protein, CSRP2-binding protein, ADA2A-containing complex subunit 2, ATAC2, CRP2-binding partner, CRP2BP, CSRP2BP

Target/Specificity

This CSRP2BP antibody is generated from rabbits immunized with a KLH conjugated synthetic peptide between 246-275 amino acids from the Central region of human CSRP2BP.

Dilution

WB~~1:1000
IHC-P~~1:50~100

Format

Purified polyclonal antibody supplied in PBS with 0.09% (W/V) sodium azide. This antibody is purified through a protein A column, followed by peptide affinity purification.

Storage

Maintain refrigerated at 2-8°C for up to 2 weeks. For long term storage store at -20°C in small aliquots to prevent freeze-thaw cycles.

Precautions

CSRP2BP Antibody (Center) is for research use only and not for use in diagnostic or therapeutic procedures.

CSRP2BP Antibody (Center) - Protein Information

Name KAT14 ([HGNC:15904](#))

Synonyms CSRP2BP

Function Component of the ATAC complex, a complex with histone acetyltransferase activity on histones H3 and H4. May function as a scaffold for the ATAC complex to promote ATAC complex stability. Has also weak histone acetyltransferase activity toward histone H4. Required for the normal progression through G1 and G2/M phases of the cell cycle.

Cellular Location

Nucleus. Cytoplasm. Note=Mainly nuclear.

Tissue Location

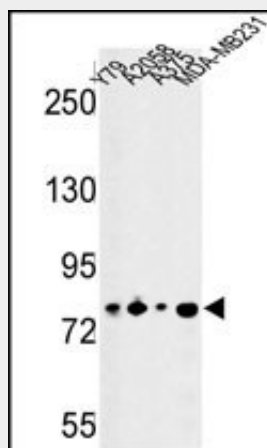
Expressed in skeletal muscle, heart, lung, placenta, brain, liver, pancreas and kidney. High expression in skeletal muscle and heart. Lower expression in lung

CSRP2BP Antibody (Center) - Protocols

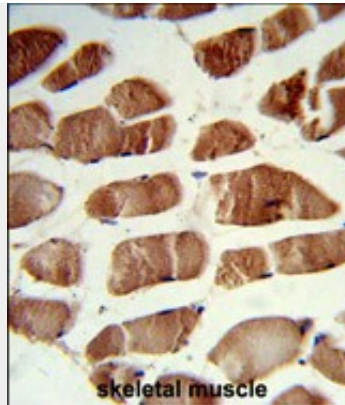
Provided below are standard protocols that you may find useful for product applications.

- [Western Blot](#)
- [Blocking Peptides](#)
- [Dot Blot](#)
- [Immunohistochemistry](#)
- [Immunofluorescence](#)
- [Immunoprecipitation](#)
- [Flow Cytometry](#)
- [Cell Culture](#)

CSRP2BP Antibody (Center) - Images



Western blot analysis of CSRP2BP Antibody (Center) (Cat. #AP8865c) in Y79, A2058, A375, MDA-MB231 cell line lysates (35ug/lane). CSRP2BP (arrow) was detected using the purified Pab.



Formalin-fixed and paraffin-embedded human skeletal muscle reacted with CSRP2BP Antibody (Center), which was peroxidase-conjugated to the secondary antibody, followed by DAB staining. This data demonstrates the use of this antibody for immunohistochemistry; clinical relevance has not been evaluated.

CSRP2BP Antibody (Center) - Background

CSRP2 is a protein containing two LIM domains, which are double zinc finger motifs found in proteins of diverse function. CSRP2 and some related proteins are thought to act as protein adapters, bridging two or more proteins to form a larger protein complex. The protein encoded by this gene binds to one of the LIM domains of CSRP2 and contains an acetyltransferase domain. Although the encoded protein has been detected in the cytoplasm, it is predominantly a nuclear protein. Two transcript variants encoding different isoforms have been found for this gene.

CSRP2BP Antibody (Center) - References

Venkatesan,K.,et.al., Nat. Methods 6 (1), 83-90 (2009)