

C1QTNF6 Antibody (N-term)
Affinity Purified Rabbit Polyclonal Antibody (Pab)
Catalog # AP8883a

Specification

C1QTNF6 Antibody (N-term) - Product Information

Application	WB, IHC-P,E
Primary Accession	Q9BXI9
Reactivity	Human
Host	Rabbit
Clonality	Polyclonal
Isotype	Rabbit IgG
Calculated MW	30861
Antigen Region	27-53

C1QTNF6 Antibody (N-term) - Additional Information

Gene ID 114904

Other Names

Complement C1q tumor necrosis factor-related protein 6, C1QTNF6, CTRP6

Target/Specificity

This C1QTNF6 antibody is generated from rabbits immunized with a KLH conjugated synthetic peptide between 27-53 amino acids from the N-terminal region of human C1QTNF6.

Dilution

WB~~1:1000
IHC-P~~1:50~100

Format

Purified polyclonal antibody supplied in PBS with 0.09% (W/V) sodium azide. This antibody is purified through a protein A column, followed by peptide affinity purification.

Storage

Maintain refrigerated at 2-8°C for up to 2 weeks. For long term storage store at -20°C in small aliquots to prevent freeze-thaw cycles.

Precautions

C1QTNF6 Antibody (N-term) is for research use only and not for use in diagnostic or therapeutic procedures.

C1QTNF6 Antibody (N-term) - Protein Information

Name C1QTNF6

Synonyms CTRP6

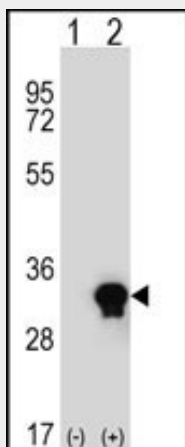
Cellular Location
Secreted.

C1QTNF6 Antibody (N-term) - Protocols

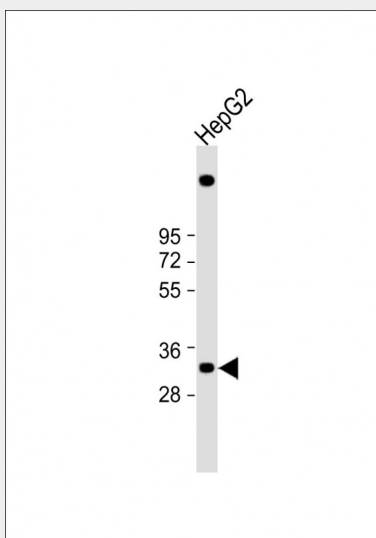
Provided below are standard protocols that you may find useful for product applications.

- [Western Blot](#)
- [Blocking Peptides](#)
- [Dot Blot](#)
- [Immunohistochemistry](#)
- [Immunofluorescence](#)
- [Immunoprecipitation](#)
- [Flow Cytometry](#)
- [Cell Culture](#)

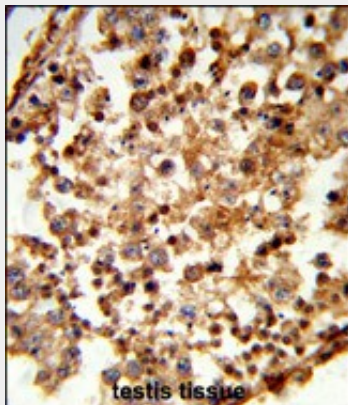
C1QTNF6 Antibody (N-term) - Images



Western blot analysis of C1QTNF6 (arrow) using rabbit polyclonal C1QTNF6 Antibody (N-term) (Cat. #AP8883a). 293 cell lysates (2 ug/lane) either nontransfected (Lane 1) or transiently transfected (Lane 2) with the C1QTNF6 gene.



Anti-C1QTNF6 Antibody (N-term) at 1:1000 dilution + HepG2 whole cell lysate Lysates/proteins at 20 µg per lane. Secondary Goat Anti-Rabbit IgG, (H+L), Peroxidase conjugated at 1/10000 dilution. Predicted band size : 29 kDa Blocking/Dilution buffer: 5% NFDM/TBST.



Formalin-fixed and paraffin-embedded human testis tissue reacted with C1QTNF6 Antibody (N-term), which was peroxidase-conjugated to the secondary antibody, followed by DAB staining. This data demonstrates the use of this antibody for immunohistochemistry; clinical relevance has not been evaluated.

C1QTNF6 Antibody (N-term) - Background

CTRP6 is an adipokine. It contains at least 4 glycosylation motifs, suggesting that it may be highly post-translationally modified. Unlike adiponectin, which is expressed exclusively by differentiated adipocytes, the CTRPs are expressed in a wide variety of tissues. These proteins are thought to act mainly on liver and muscle tissue to control glucose and lipid metabolism.

C1QTNF6 Antibody (N-term) - References

Cooper,J.D., et.al., Nat. Genet. 40 (12), 1399-1401 (2008)
Zhang,Z.et.al., Protein Sci. 13 (10), 2819-2824 (2004)