

C1QB Antibody (N-term)
Affinity Purified Rabbit Polyclonal Antibody (Pab)
Catalog # AP8893a**Specification**

C1QB Antibody (N-term) - Product Information

Application	WB, FC,E
Primary Accession	P02746
Reactivity	Human
Host	Rabbit
Clonality	Polyclonal
Isotype	Rabbit IgG
Calculated MW	26722
Antigen Region	55-81

C1QB Antibody (N-term) - Additional Information**Gene ID** 713**Other Names**

Complement C1q subcomponent subunit B, C1QB

Target/Specificity

This C1QB antibody is generated from rabbits immunized with a KLH conjugated synthetic peptide between 55-81 amino acids from the N-terminal region of human C1QB.

DilutionWB~~1:1000
FC~~1:10~50**Format**

Purified polyclonal antibody supplied in PBS with 0.09% (W/V) sodium azide. This antibody is purified through a protein A column, followed by peptide affinity purification.

Storage

Maintain refrigerated at 2-8°C for up to 2 weeks. For long term storage store at -20°C in small aliquots to prevent freeze-thaw cycles.

Precautions

C1QB Antibody (N-term) is for research use only and not for use in diagnostic or therapeutic procedures.

C1QB Antibody (N-term) - Protein Information**Name** C1QB

Function C1q associates with the proenzymes C1r and C1s to yield C1, the first component of the serum complement system. The collagen-like regions of C1q interact with the Ca(2+)-dependent

C1r(2)C1s(2) proenzyme complex, and efficient activation of C1 takes place on interaction of the globular heads of C1q with the Fc regions of IgG or IgM antibody present in immune complexes.

Cellular Location

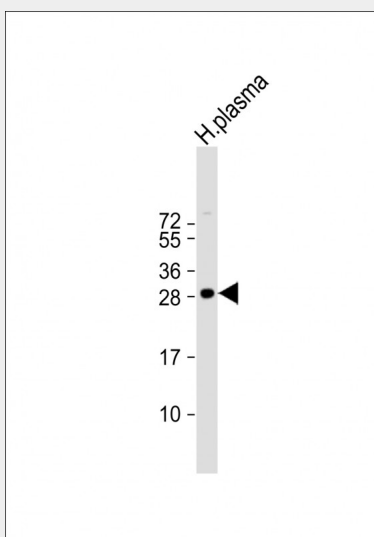
Secreted.

C1QB Antibody (N-term) - Protocols

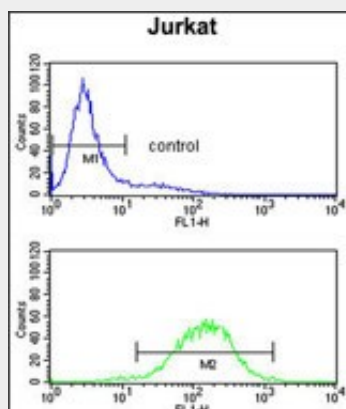
Provided below are standard protocols that you may find useful for product applications.

- [Western Blot](#)
- [Blocking Peptides](#)
- [Dot Blot](#)
- [Immunohistochemistry](#)
- [Immunofluorescence](#)
- [Immunoprecipitation](#)
- [Flow Cytometry](#)
- [Cell Culture](#)

C1QB Antibody (N-term) - Images



Anti-C1QB Antibody (N-term) at 1:1000 dilution + human plasma lysate Lysates/proteins at 20 µg per lane. Secondary Goat Anti-Rabbit IgG, (H+L), Peroxidase conjugated at 1/10000 dilution. Predicted band size : 27 kDa Blocking/Dilution buffer: 5% NFDM/TBST.



C1QB Antibody (N-term) (Cat. #AP8893a) flow cytometry analysis of Jurkat cells (bottom histogram) compared to a negative control cell (top histogram). FITC-conjugated goat-anti-rabbit secondary antibodies were used for the analysis.

C1QB Antibody (N-term) - Background

C1QB is a major constituent of the human complement subcomponent C1q. C1q associates with C1r and C1s in order to yield the first component of the serum complement system. Deficiency of C1q has been associated with lupus erythematosus and glomerulonephritis. C1q is composed of 18 polypeptide chains: six A-chains, six B-chains, and six C-chains. Each chain contains a collagen-like region located near the N terminus and a C-terminal globular region. The A-, B-, and C-chains are arranged in the order A-C-B on chromosome 1.

C1QB Antibody (N-term) - References

Reid, K.B. et al., Biochem. J. 173 (3), 863-868 (1978)
Reid, K.B. et al., Biochem. J. 179 (2), 367-371 (1979)