

KIR2DL5B Antibody (Center)
Affinity Purified Rabbit Polyclonal Antibody (Pab)
Catalog # AP8909c**Specification**

KIR2DL5B Antibody (Center) - Product Information

| | |
|-------------------|------------------------|
| Application | WB, IHC-P, FC,E |
| Primary Accession | Q8NHK3 |
| Other Accession | Q8N109 |
| Reactivity | Human |
| Host | Rabbit |
| Clonality | Polyclonal |
| Isotype | Rabbit IgG |
| Antigen Region | 264-290 |

KIR2DL5B Antibody (Center) - Additional Information**Gene ID** 553128**Other Names**

Killer cell immunoglobulin-like receptor 2DL5B, CD158 antigen-like family member F2, Killer cell immunoglobulin-like receptor 2DLX, CD158f2, KIR2DL5B, CD158F, CD158F2, KIR2DL5, KIR2DLX

Target/Specificity

This KIR2DL5B antibody is generated from rabbits immunized with a KLH conjugated synthetic peptide between 264-290 amino acids from the Central region of human KIR2DL5B.

Dilution

WB~~1:1000
IHC-P~~1:50~100
FC~~1:10~50

Format

Purified polyclonal antibody supplied in PBS with 0.09% (W/V) sodium azide. This antibody is purified through a protein A column, followed by peptide affinity purification.

Storage

Maintain refrigerated at 2-8°C for up to 2 weeks. For long term storage store at -20°C in small aliquots to prevent freeze-thaw cycles.

Precautions

KIR2DL5B Antibody (Center) is for research use only and not for use in diagnostic or therapeutic procedures.

KIR2DL5B Antibody (Center) - Protein Information**Name** KIR2DL5B

Synonyms CD158F, CD158F2, KIR2DL5, KIR2DLX

Function Receptor on natural killer (NK) cells for HLA-C alleles. Inhibits the activity of NK cells thus preventing cell lysis.

Cellular Location

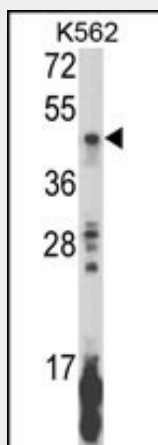
Cell membrane; Single-pass type I membrane protein

KIR2DL5B Antibody (Center) - Protocols

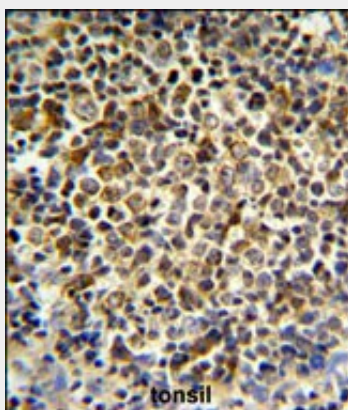
Provided below are standard protocols that you may find useful for product applications.

- [Western Blot](#)
- [Blocking Peptides](#)
- [Dot Blot](#)
- [Immunohistochemistry](#)
- [Immunofluorescence](#)
- [Immunoprecipitation](#)
- [Flow Cytometry](#)
- [Cell Culture](#)

KIR2DL5B Antibody (Center) - Images

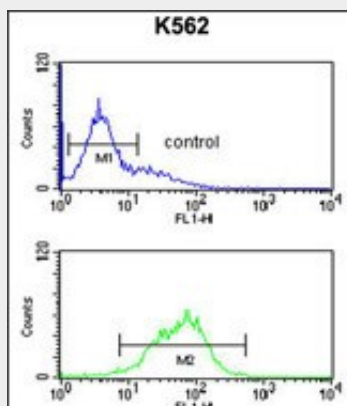


Western blot analysis of KIR2DL5B Antibody (Center) (Cat. #AP8909c) in K562 cell line lysates (35ug/lane). KIR2DL5B (arrow) was detected using the purified Pab.



KIR2DL5B Antibody (Center) (Cat. #AP8909c) IHC analysis in formalin fixed and paraffin

embedded human tonsil tissue followed by peroxidase conjugation of the secondary antibody and DAB staining. This data demonstrates the use of the KIR2DL5B Antibody (Center) for immunohistochemistry. Clinical relevance has not been evaluated.



KIR2DL5B Antibody (Center) (Cat. #AP8909c) flow cytometric analysis of K562 cells (bottom histogram) compared to a negative control cell (top histogram). FITC-conjugated goat-anti-rabbit secondary antibodies were used for the analysis.

KIR2DL5B Antibody (Center) - Background

KIR2DL5B is a receptor on natural killer (NK) cells for HLA-C alleles. It inhibits the activity of NK cells thus preventing cell lysis.

KIR2DL5B Antibody (Center) - References

Gomez-Lozano N., et.al., Immunogenetics 54:314-319(2002).