

ALDH18A1 Antibody (Center)
Affinity Purified Rabbit Polyclonal Antibody (Pab)
Catalog # AP8938c**Specification**

ALDH18A1 Antibody (Center) - Product Information

Application	WB, IHC-P, FC,E
Primary Accession	P54886
Other Accession	Q9Z110
Reactivity	Human
Predicted	Mouse
Host	Rabbit
Clonality	Polyclonal
Isotype	Rabbit IgG
Calculated MW	87302
Antigen Region	176-205

ALDH18A1 Antibody (Center) - Additional Information**Gene ID** 5832**Other Names**

Delta-1-pyrroline-5-carboxylate synthase, P5CS, Aldehyde dehydrogenase family 18 member A1, Glutamate 5-kinase, GK, Gamma-glutamyl kinase, Gamma-glutamyl phosphate reductase, GPR, Glutamate-5-semialdehyde dehydrogenase, Glutamyl-gamma-semialdehyde dehydrogenase, ALDH18A1, GSAS, P5CS, PYCS

Target/Specificity

This ALDH18A1 antibody is generated from rabbits immunized with a KLH conjugated synthetic peptide between 176-205 amino acids from the Central region of human ALDH18A1.

Dilution

WB~~1:1000
IHC-P~~1:50~100
FC~~1:10~50

Format

Purified polyclonal antibody supplied in PBS with 0.09% (W/V) sodium azide. This antibody is purified through a protein A column, followed by peptide affinity purification.

Storage

Maintain refrigerated at 2-8°C for up to 2 weeks. For long term storage store at -20°C in small aliquots to prevent freeze-thaw cycles.

Precautions

ALDH18A1 Antibody (Center) is for research use only and not for use in diagnostic or therapeutic procedures.

ALDH18A1 Antibody (Center) - Protein Information

Name ALDH18A1

Synonyms GSAS, P5CS, PYCS

Function Bifunctional enzyme that converts glutamate to glutamate 5- semialdehyde, an intermediate in the biosynthesis of proline, ornithine and arginine.

Cellular Location

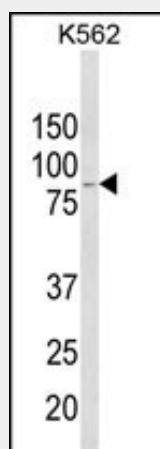
Mitochondrion inner membrane

ALDH18A1 Antibody (Center) - Protocols

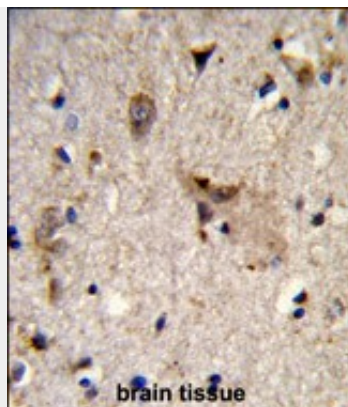
Provided below are standard protocols that you may find useful for product applications.

- [Western Blot](#)
- [Blocking Peptides](#)
- [Dot Blot](#)
- [Immunohistochemistry](#)
- [Immunofluorescence](#)
- [Immunoprecipitation](#)
- [Flow Cytometry](#)
- [Cell Culture](#)

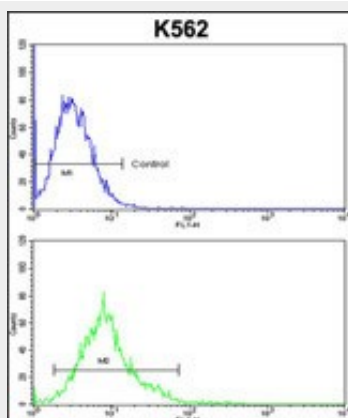
ALDH18A1 Antibody (Center) - Images



Western blot analysis of ALDH18A1 Antibody (Center) (Cat. #AP8938c) in K562 cell line lysates (35ug/lane). ALDH18A1 (arrow) was detected using the purified Pab.



Formalin-fixed and paraffin-embedded human brain tissue reacted with ALDH18A1 Antibody (Center), which was peroxidase-conjugated to the secondary antibody, followed by DAB staining. This data demonstrates the use of this antibody for immunohistochemistry; clinical relevance has not been evaluated.



ALDH18A1 Antibody (Center) (Cat. #AP8938c) flow cytometric analysis of k562 cells (bottom histogram) compared to a negative control cell (top histogram). FITC-conjugated goat-anti-rabbit secondary antibodies were used for the analysis.

ALDH18A1 Antibody (Center) - Background

ALDH18A1 is a member of the aldehyde dehydrogenase family and encodes a bifunctional ATP- and NADPH-dependent mitochondrial enzyme with both gamma-glutamyl kinase and gamma-glutamyl phosphate reductase activities. The encoded protein catalyzes the reduction of glutamate to delta1-pyrroline-5-carboxylate, a critical step in the de novo biosynthesis of proline, ornithine and arginine.

ALDH18A1 Antibody (Center) - References

Hu,C.A., et.al., Amino Acids 35 (4), 665-672 (2008)
Bicknell,L.S., et.al., Eur. J. Hum. Genet. 16 (10), 1176-1186 (2008)