

**ARG1 Antibody (C-term)**  
**Affinity Purified Rabbit Polyclonal Antibody (Pab)**  
**Catalog # AP8976b****Specification**

---

**ARG1 Antibody (C-term) - Product Information**

Application	WB, IHC-P, FC,E
Primary Accession	<a href="#">P05089</a>
Reactivity	Human
Host	Rabbit
Clonality	Polyclonal
Isotype	Rabbit IgG
Antigen Region	293-322

**ARG1 Antibody (C-term) - Additional Information****Gene ID** 383**Other Names**

Arginase-1, Liver-type arginase, Type I arginase, ARG1

**Target/Specificity**

This ARG1 antibody is generated from rabbits immunized with a KLH conjugated synthetic peptide between 293-322 amino acids from the C-terminal region of human ARG1.

**Dilution**

WB~~1:1000  
IHC-P~~1:50~100  
FC~~1:10~50

**Format**

Purified polyclonal antibody supplied in PBS with 0.09% (W/V) sodium azide. This antibody is purified through a protein A column, followed by peptide affinity purification.

**Storage**

Maintain refrigerated at 2-8°C for up to 2 weeks. For long term storage store at -20°C in small aliquots to prevent freeze-thaw cycles.

**Precautions**

ARG1 Antibody (C-term) is for research use only and not for use in diagnostic or therapeutic procedures.

**ARG1 Antibody (C-term) - Protein Information****Name** ARG1

**Function** Key element of the urea cycle converting L-arginine to urea and L-ornithine, which is further metabolized into metabolites proline and polyamides that drive collagen synthesis and

bioenergetic pathways critical for cell proliferation, respectively; the urea cycle takes place primarily in the liver and, to a lesser extent, in the kidneys.

#### Cellular Location

Cytoplasm. Cytoplasmic granule. Note=Localized in azurophil granules of neutrophils (PubMed:15546957)

#### Tissue Location

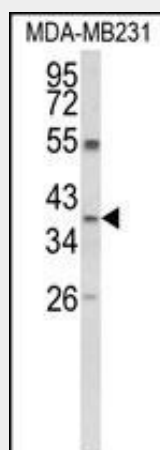
Within the immune system initially reported to be selectively expressed in granulocytes (polymorphonuclear leukocytes [PMNs]) (PubMed:15546957). Also detected in macrophages mycobacterial granulomas (PubMed:23749634). Expressed in group2 innate lymphoid cells (ILC2s) during lung disease (PubMed:27043409)

### ARG1 Antibody (C-term) - Protocols

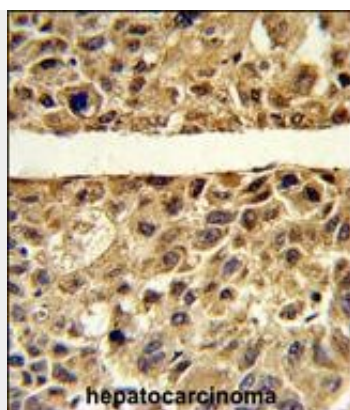
Provided below are standard protocols that you may find useful for product applications.

- [Western Blot](#)
- [Blocking Peptides](#)
- [Dot Blot](#)
- [Immunohistochemistry](#)
- [Immunofluorescence](#)
- [Immunoprecipitation](#)
- [Flow Cytometry](#)
- [Cell Culture](#)

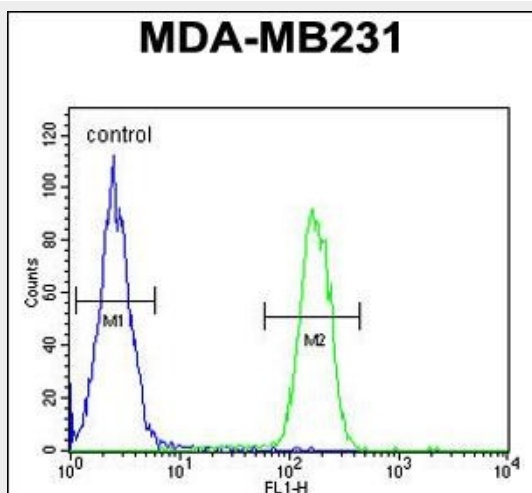
### ARG1 Antibody (C-term) - Images



Western blot analysis of ARG1 Antibody (C-term) (Cat. #AP8976b) in MDA-MB231 cell line lysates (35ug/lane). ARG1 (arrow) was detected using the purified Pab.



Formalin-fixed and paraffin-embedded human hepatocarcinoma reacted with ARG1 Antibody (C-term), which was peroxidase-conjugated to the secondary antibody, followed by DAB staining. This data demonstrates the use of this antibody for immunohistochemistry; clinical relevance has not been evaluated.



ARG1 Antibody (C-term) (Cat. #AP8976b) flow cytometric analysis of MDA-MB231 cells (right histogram) compared to a negative control cell (left histogram). FITC-conjugated goat-anti-rabbit secondary antibodies were used for the analysis.

### ARG1 Antibody (C-term) - Background

Arginase catalyzes the hydrolysis of arginine to ornithine and urea. At least two isoforms of mammalian arginase exist (types I and II) which differ in their tissue distribution, subcellular localization, immunologic crossreactivity and physiologic function. The type I isoform encoded by this gene, is a cytosolic enzyme and expressed predominantly in the liver as a component of the urea cycle. Inherited deficiency of this enzyme results in argininemia, an autosomal recessive disorder characterized by hyperammonemia.

### ARG1 Antibody (C-term) - References

Haraguchi, Y., et al., J. Clin. Invest. 86 (1), 347-350 (1990)

### ARG1 Antibody (C-term) - Citations

- [ARG1 functions as a tumor suppressor in breast cancer](#)