

C15orf2 Antibody (Center)
Affinity Purified Rabbit Polyclonal Antibody (Pab)
Catalog # AP8982c**Specification**

C15orf2 Antibody (Center) - Product Information

Application	WB, IHC-P, FC,E
Primary Accession	Q9NZP6
Reactivity	Human
Host	Rabbit
Clonality	Polyclonal
Isotype	Rabbit IgG
Antigen Region	348-377

C15orf2 Antibody (Center) - Additional Information**Gene ID** 23742**Other Names**

Nuclear pore-associated protein 1, NPAP1, C15orf2

Target/Specificity

This C15orf2 antibody is generated from rabbits immunized with a KLH conjugated synthetic peptide between 348-377 amino acids from the Central region of human C15orf2.

Dilution

WB~~1:1000
IHC-P~~1:50~100
FC~~1:10~50

Format

Purified polyclonal antibody supplied in PBS with 0.09% (W/V) sodium azide. This antibody is purified through a protein A column, followed by peptide affinity purification.

Storage

Maintain refrigerated at 2-8°C for up to 2 weeks. For long term storage store at -20°C in small aliquots to prevent freeze-thaw cycles.

Precautions

C15orf2 Antibody (Center) is for research use only and not for use in diagnostic or therapeutic procedures.

C15orf2 Antibody (Center) - Protein Information**Name** NPAP1**Synonyms** C15orf2

Function May be involved in spermatogenesis.

Cellular Location

Nucleus, nucleoplasm. Nucleus inner membrane. Note=Colocalizes with the NPC and nuclear lamins at the nuclear periphery

Tissue Location

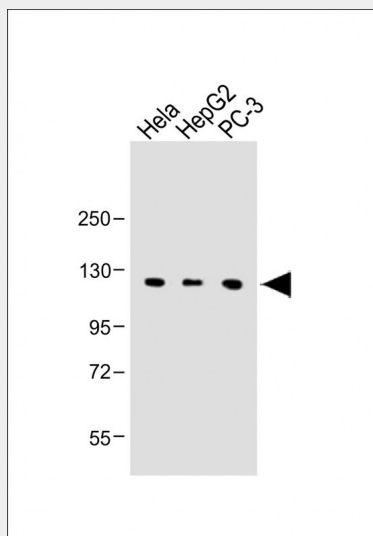
Testis-specific in adults. In fetal brain expressed only from the paternal allele.

C15orf2 Antibody (Center) - Protocols

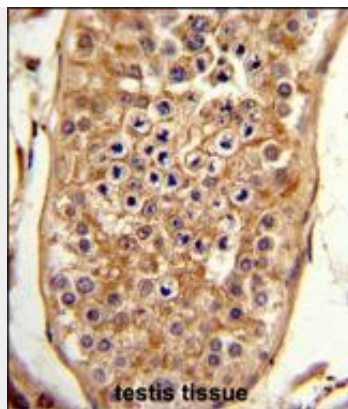
Provided below are standard protocols that you may find useful for product applications.

- [Western Blot](#)
- [Blocking Peptides](#)
- [Dot Blot](#)
- [Immunohistochemistry](#)
- [Immunofluorescence](#)
- [Immunoprecipitation](#)
- [Flow Cytometry](#)
- [Cell Culture](#)

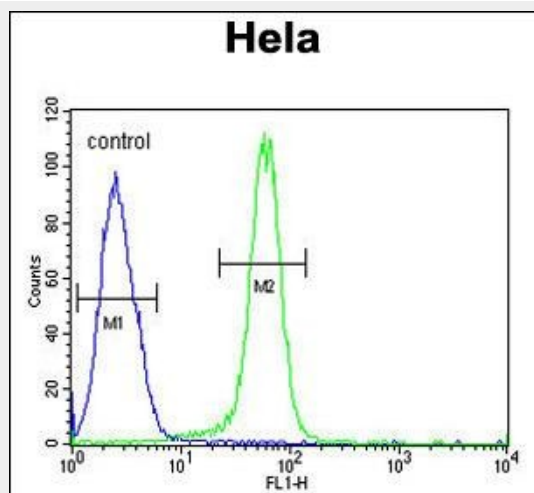
C15orf2 Antibody (Center) - Images



All lanes : Anti-C15orf2 Antibody (Center) at 1:1000 dilution Lane 1: HeLa whole cell lysate Lane 2: HepG2 whole cell lysate Lane 3: PC-3 whole cell lysate Lysates/proteins at 20 µg per lane. Secondary Goat Anti-Rabbit IgG, (H+L), Peroxidase conjugated at 1/10000 dilution. Predicted band size : 121 kDa Blocking/Dilution buffer: 5% NFDM/TBST.



Formalin-fixed and paraffin-embedded human testis tissue reacted with C15orf2 Antibody (Center), which was peroxidase-conjugated to the secondary antibody, followed by DAB staining. This data demonstrates the use of this antibody for immunohistochemistry; clinical relevance has not been evaluated.



C15orf2 Antibody (Center) (Cat. #AP8982c) flow cytometric analysis of Hela cells (right histogram) compared to a negative control cell (left histogram). FITC-conjugated goat-anti-rabbit secondary antibodies were used for the analysis.

C15orf2 Antibody (Center) - Background

C15orf2 may be involved in spermatogenesis.

C15orf2 Antibody (Center) - References

Farber, C., et al., Genomics 65 (2), 174-183 (2000)

C15orf2 Antibody (Center) - Citations

- [The imprinted NPAP1/C15orf2 gene in the Prader-Willi syndrome region encodes a nuclear pore complex associated protein.](#)