

DAB1 Antibody (Center)
Affinity Purified Rabbit Polyclonal Antibody (Pab)
Catalog # AP8986c**Specification**

DAB1 Antibody (Center) - Product Information

Application	WB, IHC-P,E
Primary Accession	O75553
Other Accession	Q8CJH2 , P97318 , Q9BGX5
Reactivity	Human, Mouse
Predicted	Monkey, Rat
Host	Rabbit
Clonality	Polyclonal
Isotype	Rabbit IgG
Calculated MW	63775
Antigen Region	189-216

DAB1 Antibody (Center) - Additional Information**Gene ID** 1600**Other Names**

Disabled homolog 1, DAB1

Target/Specificity

This DAB1 antibody is generated from rabbits immunized with a KLH conjugated synthetic peptide between 189-216 amino acids from the Central region of human DAB1.

Dilution

WB~~1:1000

IHC-P~~1:50~100

Format

Purified polyclonal antibody supplied in PBS with 0.09% (W/V) sodium azide. This antibody is purified through a protein A column, followed by peptide affinity purification.

Storage

Maintain refrigerated at 2-8°C for up to 2 weeks. For long term storage store at -20°C in small aliquots to prevent freeze-thaw cycles.

Precautions

DAB1 Antibody (Center) is for research use only and not for use in diagnostic or therapeutic procedures.

DAB1 Antibody (Center) - Protein Information**Name** DAB1

Function Adapter molecule functioning in neural development. May regulate SIAH1 activity.

Tissue Location

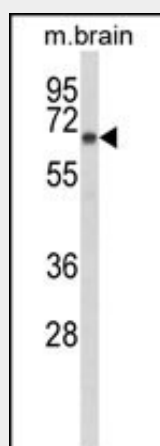
Mainly expressed in brain.

DAB1 Antibody (Center) - Protocols

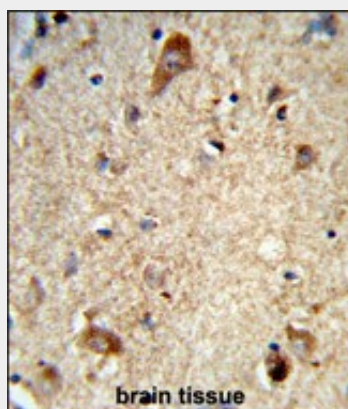
Provided below are standard protocols that you may find useful for product applications.

- [Western Blot](#)
- [Blocking Peptides](#)
- [Dot Blot](#)
- [Immunohistochemistry](#)
- [Immunofluorescence](#)
- [Immunoprecipitation](#)
- [Flow Cytometry](#)
- [Cell Culture](#)

DAB1 Antibody (Center) - Images



Western blot analysis of DAB1 Antibody (Center) (Cat. #AP8986c) in mouse brain tissue lysates (35ug/lane). DAB1 (arrow) was detected using the purified Pab.



Formalin-fixed and paraffin-embedded human brain tissue reacted with DAB1 Antibody (Center), which was peroxidase-conjugated to the secondary antibody, followed by DAB staining. This data demonstrates the use of this antibody for immunohistochemistry; clinical relevance has not been

evaluated.

DAB1 Antibody (Center) - Background

DAB1 is adapter molecule functioning in neural development. It may regulate SIAH1 activity (By similarity).

DAB1 Antibody (Center) - References

Ranganathan S., et.al., J. Biol. Chem. 279:40536-40544(2004).