

**EXOC5 Antibody (C-term)**  
**Affinity Purified Rabbit Polyclonal Antibody (Pab)**  
**Catalog # AP9006B****Specification**

---

**EXOC5 Antibody (C-term) - Product Information**

Application	WB, IHC-P, FC,E
Primary Accession	<a href="#">O00471</a>
Other Accession	<a href="#">Q8TDX5</a>
Reactivity	Human
Host	Rabbit
Clonality	Polyclonal
Isotype	Rabbit IgG
Calculated MW	81853
Antigen Region	40-66

**EXOC5 Antibody (C-term) - Additional Information****Gene ID** 10640**Other Names**

Exocyst complex component 5, Exocyst complex component Sec10, hSec10, EXOC5, SEC10, SEC10L1

**Target/Specificity**

This EXOC5 antibody is generated from rabbits immunized with a KLH conjugated synthetic peptide between 40-66 amino acids from the C-terminal region of human EXOC5.

**Dilution**WB~~1:1000  
IHC-P~~1:50~100  
FC~~1:10~50**Format**

Purified polyclonal antibody supplied in PBS with 0.09% (W/V) sodium azide. This antibody is purified through a protein A column, followed by peptide affinity purification.

**Storage**

Maintain refrigerated at 2-8°C for up to 2 weeks. For long term storage store at -20°C in small aliquots to prevent freeze-thaw cycles.

**Precautions**

EXOC5 Antibody (C-term) is for research use only and not for use in diagnostic or therapeutic procedures.

**EXOC5 Antibody (C-term) - Protein Information****Name** EXOC5

**Synonyms** SEC10, SEC10L1

**Function** Component of the exocyst complex involved in the docking of exocytic vesicles with fusion sites on the plasma membrane.

**Cellular Location**

Cytoplasm. Midbody. Note=Localization at the midbody requires the presence of RALA, EXOC2 and EXOC3

**Tissue Location**

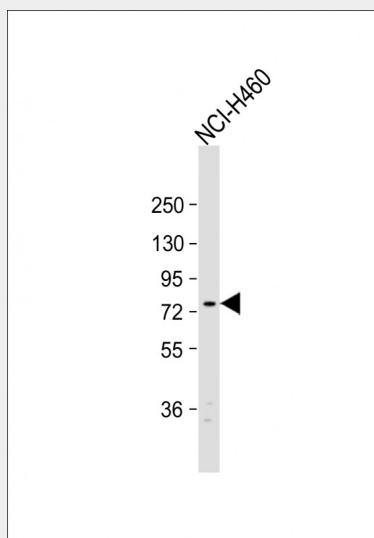
Ubiquitous..

**EXOC5 Antibody (C-term) - Protocols**

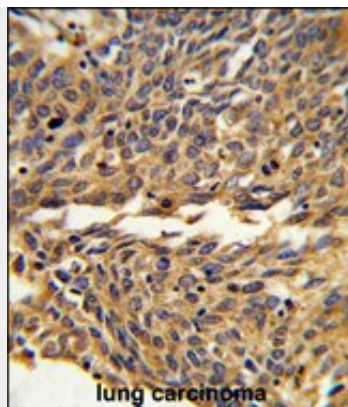
Provided below are standard protocols that you may find useful for product applications.

- [Western Blot](#)
- [Blocking Peptides](#)
- [Dot Blot](#)
- [Immunohistochemistry](#)
- [Immunofluorescence](#)
- [Immunoprecipitation](#)
- [Flow Cytometry](#)
- [Cell Culture](#)

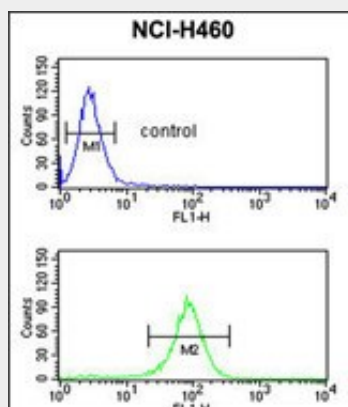
**EXOC5 Antibody (C-term) - Images**



Anti-EXOC5 Antibody (C-term) at 1:1000 dilution + NCI-H460 whole cell lysate Lysates/proteins at 20 µg per lane. Secondary Goat Anti-Rabbit IgG, (H+L), Peroxidase conjugated at 1/10000 dilution. Predicted band size : 82 kDa Blocking/Dilution buffer: 5% NFDM/TBST.



Formalin-fixed and paraffin-embedded human lung carcinoma reacted with EXOC5 Antibody (C-term), which was peroxidase-conjugated to the secondary antibody, followed by DAB staining. This data demonstrates the use of this antibody for immunohistochemistry; clinical relevance has not been evaluated.



EXOC5 Antibody (C-term) (Cat. #AP9006b) flow cytometric analysis of NCI-H460 cells (bottom histogram) compared to a negative control cell (top histogram). FITC-conjugated goat-anti-rabbit secondary antibodies were used for the analysis.

### EXOC5 Antibody (C-term) - Background

EXOC5 is a component of the exocyst complex, a multiple protein complex essential for targeting exocytic vesicles to specific docking sites on the plasma membrane. Though best characterized in yeast, the component proteins and functions of exocyst complex have been demonstrated to be highly conserved in higher eukaryotes. At least eight components of the exocyst complex, including this protein, are found to interact with the actin cytoskeletal remodeling and vesicle transport machinery. The complex is also essential for the biogenesis of epithelial cell surface polarity.

### EXOC5 Antibody (C-term) - References

Kee, Y., et al., Proc. Natl. Acad. Sci. U.S.A. 94 (26), 14438-14443 (1997)  
Hsu, S.C., et al., Neuron 20 (6), 1111-1122 (1998)