

C19orf50 Antibody (Center)
Affinity Purified Rabbit Polyclonal Antibody (Pab)
Catalog # AP9140d**Specification**

C19orf50 Antibody (Center) - Product Information

Application	WB, IHC-P,E
Primary Accession	Q9BQD3
Other Accession	Q5M853 , Q80XH1 , Q3SZV2 , NP_076974.1
Reactivity	Human
Predicted	Bovine, Mouse, Rat
Host	Rabbit
Clonality	Polyclonal
Isotype	Rabbit IgG
Calculated MW	19668
Antigen Region	59-85

C19orf50 Antibody (Center) - Additional Information**Gene ID** 79036**Other Names**

KxDL motif-containing protein 1, KXD1, C19orf50

Target/Specificity

This C19orf50 antibody is generated from rabbits immunized with a KLH conjugated synthetic peptide between 59-85 amino acids from the Central region of human C19orf50.

Dilution

WB~~1:1000

IHC-P~~1:50~100

Format

Purified polyclonal antibody supplied in PBS with 0.09% (W/V) sodium azide. This antibody is purified through a protein A column, followed by peptide affinity purification.

Storage

Maintain refrigerated at 2-8°C for up to 2 weeks. For long term storage store at -20°C in small aliquots to prevent freeze-thaw cycles.

Precautions

C19orf50 Antibody (Center) is for research use only and not for use in diagnostic or therapeutic procedures.

C19orf50 Antibody (Center) - Protein Information**Name** KXD1

Synonyms C19orf50

Function As part of the BORC complex may play a role in lysosomes movement and localization at the cell periphery. Associated with the cytosolic face of lysosomes, the BORC complex may recruit ARL8B and couple lysosomes to microtubule plus-end-directed kinesin motor (PubMed:[25898167](#)). May be involved in the biogenesis of lysosome- related organelles such as melanosomes (By similarity).

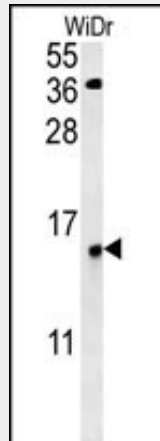
Cellular Location

Lysosome membrane.

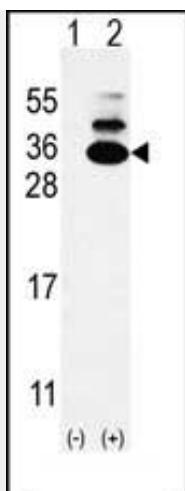
C19orf50 Antibody (Center) - Protocols

Provided below are standard protocols that you may find useful for product applications.

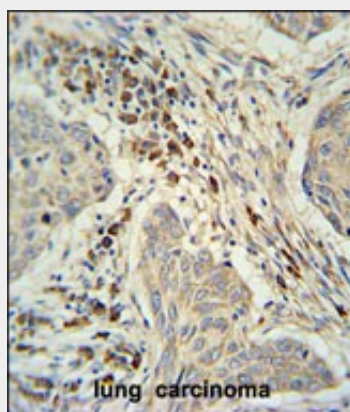
- [Western Blot](#)
- [Blocking Peptides](#)
- [Dot Blot](#)
- [Immunohistochemistry](#)
- [Immunofluorescence](#)
- [Immunoprecipitation](#)
- [Flow Cytometry](#)
- [Cell Culture](#)

C19orf50 Antibody (Center) - Images

C19orf50 Antibody (Center) (Cat. #AP9140d) western blot analysis in WiDr cell line lysates (35ug/lane). This demonstrates the C19orf50 antibody detected the C19orf50 protein (arrow).



Western blot analysis of C19orf50 (arrow) using rabbit polyclonal C19orf50 Antibody (Center) (Cat. #AP9140d). 293 cell lysates (2 ug/lane) either nontransfected (Lane 1) or transiently transfected (Lane 2) with the C19orf50 gene.



C19orf50 Antibody (Center) (Cat. #AP9140d) immunohistochemistry analysis in formalin fixed and paraffin embedded human lung carcinoma followed by peroxidase conjugation of the secondary antibody and DAB staining. This data demonstrates the use of the C19orf50 Antibody (Center) for immunohistochemistry. Clinical relevance has not been evaluated.

C19orf50 Antibody (Center) - Background

The function of the C19orf50 protein has not yet been determined.

C19orf50 Antibody (Center) - References

Oh, J.H., et al. Mamm. Genome 16(12):942-954(2005)