

**TPK1 Antibody (N-term)**  
**Affinity Purified Rabbit Polyclonal Antibody (Pab)**  
**Catalog # AP9142A**

**Specification**

---

**TPK1 Antibody (N-term) - Product Information**

Application	WB, IHC-P,E
Primary Accession	<a href="#">Q9H3S4</a>
Reactivity	Human, Mouse
Host	Rabbit
Clonality	Polyclonal
Isotype	Rabbit IgG
Calculated MW	27265
Antigen Region	34-61

**TPK1 Antibody (N-term) - Additional Information**

**Gene ID** 27010

**Other Names**

Thiamin pyrophosphokinase 1, hTPK1, Placental protein 20, PP20, Thiamine pyrophosphokinase 1, TPK1

**Target/Specificity**

This TPK1 antibody is generated from rabbits immunized with a KLH conjugated synthetic peptide between 34-61 amino acids from the N-terminal region of human TPK1.

**Dilution**

WB~~1:1000  
IHC-P~~1:50~100

**Format**

Purified polyclonal antibody supplied in PBS with 0.09% (W/V) sodium azide. This antibody is purified through a protein A column, followed by peptide affinity purification.

**Storage**

Maintain refrigerated at 2-8°C for up to 2 weeks. For long term storage store at -20°C in small aliquots to prevent freeze-thaw cycles.

**Precautions**

TPK1 Antibody (N-term) is for research use only and not for use in diagnostic or therapeutic procedures.

**TPK1 Antibody (N-term) - Protein Information**

**Name** TPK1 {ECO:0000303|PubMed:11342111, ECO:0000312|HGNC:HGNC:17358}

**Function** Catalyzes the phosphorylation of thiamine to thiamine pyrophosphate. Can also catalyze

the phosphorylation of pyriithiamine to pyriithiamine pyrophosphate.

#### Tissue Location

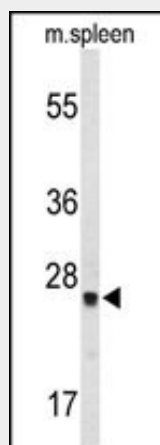
Detected in heart, kidney, testis, small intestine and peripheral blood leukocytes, and at very low levels in a variety of tissues.

#### TPK1 Antibody (N-term) - Protocols

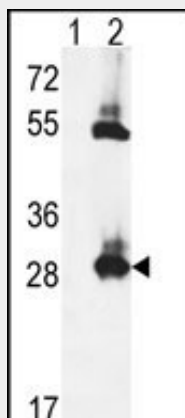
Provided below are standard protocols that you may find useful for product applications.

- [Western Blot](#)
- [Blocking Peptides](#)
- [Dot Blot](#)
- [Immunohistochemistry](#)
- [Immunofluorescence](#)
- [Immunoprecipitation](#)
- [Flow Cytometry](#)
- [Cell Culture](#)

#### TPK1 Antibody (N-term) - Images

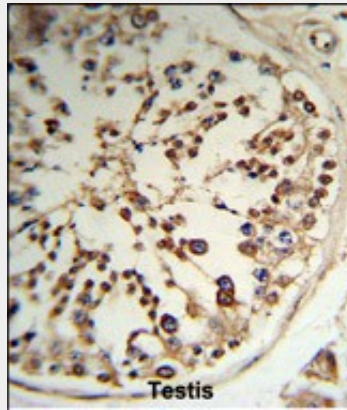


Western blot analysis of TPK1 Antibody (N-term) (Cat. #AP9142a) in mouse spleen tissue lysates (35ug/lane). TPK1 (arrow) was detected using the purified Pab.



Western blot analysis of TPK1 (arrow) using rabbit polyclonal TPK1 Antibody (N-term) (Cat. #AP9142a). 293 cell lysates (2 ug/lane) either nontransfected (Lane 1) or transiently transfected

(Lane 2) with the TPK1 gene.



Formalin-fixed and paraffin-embedded human testis tissue reacted with TPK1 Antibody (N-term), which was peroxidase-conjugated to the secondary antibody, followed by DAB staining. This data demonstrates the use of this antibody for immunohistochemistry; clinical relevance has not been evaluated.

#### **TPK1 Antibody (N-term) - Background**

TPK1 is a protein, that exists as a homodimer, which catalyzes the conversion of thiamine to thiamine pyrophosphate.

#### **TPK1 Antibody (N-term) - References**

Bohn,H. et.al., Arch. Gynecol. 236 (4), 235-242 (1985)

#### **TPK1 Antibody (N-term) - Citations**

- [Impairment of Thiamine Transport at the GUT-BBB-AXIS Contributes to Wernicke's Encephalopathy.](#)