

**FOXL1 Antibody (Center)**  
**Affinity Purified Rabbit Polyclonal Antibody (Pab)**  
**Catalog # AP9211c****Specification**

---

**FOXL1 Antibody (Center) - Product Information**

Application	WB,E
Primary Accession	<a href="#">Q12952</a>
Other Accession	<a href="#">Q64731</a>
Reactivity	Human, Mouse
Host	Rabbit
Clonality	Polyclonal
Isotype	Rabbit IgG
Calculated MW	36490
Antigen Region	94-119

**FOXL1 Antibody (Center) - Additional Information****Gene ID** 2300**Other Names**

Forkhead box protein L1, Forkhead-related protein FKHL11, Forkhead-related transcription factor 7, FREAC-7, FOXL1, FKHL11, FREAC7

**Target/Specificity**

This FOXL1 antibody is generated from rabbits immunized with a KLH conjugated synthetic peptide between 94-119 amino acids from the Central region of human FOXL1.

**Dilution**

WB~~1:1000

**Format**

Purified polyclonal antibody supplied in PBS with 0.09% (W/V) sodium azide. This antibody is purified through a protein A column, followed by peptide affinity purification.

**Storage**

Maintain refrigerated at 2-8°C for up to 2 weeks. For long term storage store at -20°C in small aliquots to prevent freeze-thaw cycles.

**Precautions**

FOXL1 Antibody (Center) is for research use only and not for use in diagnostic or therapeutic procedures.

**FOXL1 Antibody (Center) - Protein Information****Name** FOXL1**Synonyms** FKHL11, FREAC7

**Function** Transcription factor required for proper proliferation and differentiation in the gastrointestinal epithelium. Target gene of the hedgehog (Hh) signaling pathway via GLI2 and GLI3 transcription factors (By similarity).

**Cellular Location**

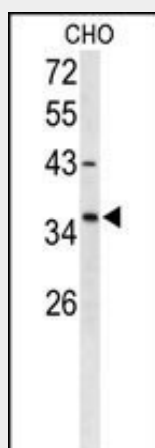
Nucleus.

**FOXL1 Antibody (Center) - Protocols**

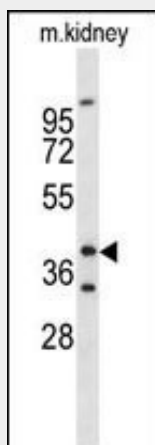
Provided below are standard protocols that you may find useful for product applications.

- [Western Blot](#)
- [Blocking Peptides](#)
- [Dot Blot](#)
- [Immunohistochemistry](#)
- [Immunofluorescence](#)
- [Immunoprecipitation](#)
- [Flow Cytometry](#)
- [Cell Culture](#)

**FOXL1 Antibody (Center) - Images**



Western blot analysis of FOXL1 Antibody (Center) (Cat. #AP9211c) in CHO cell line lysates (35ug/lane).FOXL1 (arrow) was detected using the purified Pab;



Western blot analysis of FOXL1 Antibody (Center) (Cat. #AP9211c) in mouse kidney tissue lysates (35ug/lane).FOXL1 (arrow) was detected using the purified Pab.

#### **FOXL1 Antibody (Center) - Background**

The forkhead domain is a 100-amino acid monomeric DNA binding motif originally identified as a region of homology between the Drosophila forkhead protein and rat HNF3. Pierrou et al. (1994) identified 7 human genes containing forkhead domains and designated them forkhead related activators (FREAC) 1 through 7.

#### **FOXL1 Antibody (Center) - References**

Rivadeneira,F., et.al., Nat. Genet. 41 (11), 1199-1206 (2009)  
Ferrell,R.E., et.al., Lymphat Res Biol 6 (2), 69-76 (2008)  
Hassel,S., et.al., Proteomics 4 (5), 1346-1358 (2004)