

CLDN8 Antibody (Center)
Affinity Purified Rabbit Polyclonal Antibody (Pab)
Catalog # AP9222c**Specification**

CLDN8 Antibody (Center) - Product Information

Application	WB, FC,E
Primary Accession	P56748
Reactivity	Human
Host	Rabbit
Clonality	Polyclonal
Isotype	Rabbit IgG
Antigen Region	140-166

CLDN8 Antibody (Center) - Additional Information**Gene ID** 9073**Other Names**

Claudin-8, CLDN8

Target/Specificity

This CLDN8 antibody is generated from rabbits immunized with a KLH conjugated synthetic peptide between 140-166 amino acids from the Central region of human CLDN8.

Dilution

WB~~1:1000

FC~~1:10~50

Format

Purified polyclonal antibody supplied in PBS with 0.09% (W/V) sodium azide. This antibody is purified through a protein A column, followed by peptide affinity purification.

Storage

Maintain refrigerated at 2-8°C for up to 2 weeks. For long term storage store at -20°C in small aliquots to prevent freeze-thaw cycles.

Precautions

CLDN8 Antibody (Center) is for research use only and not for use in diagnostic or therapeutic procedures.

CLDN8 Antibody (Center) - Protein Information**Name** CLDN8 ([HGNC:2050](#))

Function Tight-junction protein required for paracellular chloride transport in the kidney. Mediates recruitment of CLDN4 to tight junction in the kidney. Claudins play a major role in tight junction-specific obliteration of the intercellular space, through calcium- independent cell-adhesion activity.

Cellular Location

Cell junction, tight junction. Cell membrane {ECO:0000250|UniProtKB:Q9Z260}; Multi-pass membrane protein. Note=Localizes to tight junctions in all 3 segments of the epididymis, in the caput found in the lateral margins of principal cells, and in the corpus at the interface between basal and principal cells.

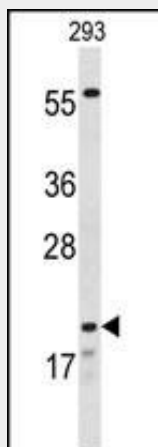
Tissue Location

Expressed in the epididymis, mainly in the caput segment.

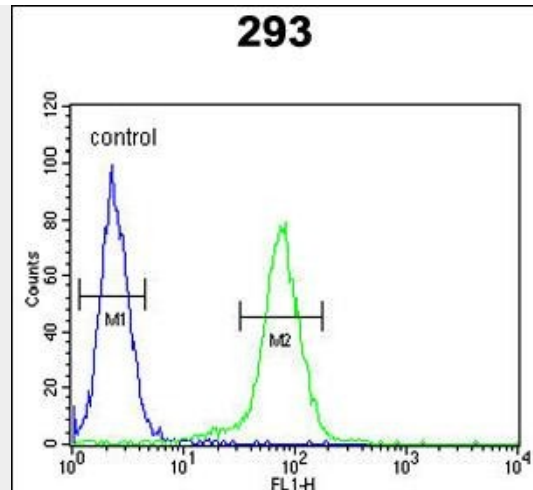
CLDN8 Antibody (Center) - Protocols

Provided below are standard protocols that you may find useful for product applications.

- [Western Blot](#)
- [Blocking Peptides](#)
- [Dot Blot](#)
- [Immunohistochemistry](#)
- [Immunofluorescence](#)
- [Immunoprecipitation](#)
- [Flow Cytometry](#)
- [Cell Culture](#)

CLDN8 Antibody (Center) - Images

Western blot analysis of CLDN8 Antibody (Center) (Cat. #AP9222c) in 293 cell line lysates (35ug/lane). CLDN8 (arrow) was detected using the purified Pab.



CLDN8 Antibody (Center) (Cat. #AP9222c) flow cytometric analysis of 293 cells (right histogram) compared to a negative control cell (left histogram). FITC-conjugated goat-anti-rabbit secondary antibodies were used for the analysis.

CLDN8 Antibody (Center) - Background

CLDN8 is components of epithelial cell tight junctions. Tight junctions regulate movement of solutes and ions through the paracellular space and prevent mixing of proteins and lipids in the outer leaflet of the apical and basolateral plasma membrane domains

CLDN8 Antibody (Center) - References

Kim, S.S., et.al., Histopathology 54 (5), 633-635 (2009)
Osunkoya, A.O., et.al, Hum. Pathol. 40 (2), 206-210 (2009)

CLDN8 Antibody (Center) - Citations

- [Claudin 8 Contributes to Malignant Proliferation in Human Osteosarcoma U2OS Cells.](#)