

**BEST2 Antibody (C-term)**  
**Affinity Purified Rabbit Polyclonal Antibody (Pab)**  
**Catalog # AP9246b****Specification**

---

**BEST2 Antibody (C-term) - Product Information**

Application	WB, IHC-P,E
Primary Accession	<a href="#">Q8NFU1</a>
Reactivity	Human
Host	Rabbit
Clonality	Polyclonal
Isotype	Rabbit IgG
Calculated MW	57139
Antigen Region	374-403

**BEST2 Antibody (C-term) - Additional Information****Gene ID** 54831**Other Names**

Bestrophin-2, Vitelliform macular dystrophy 2-like protein 1, BEST2, VMD2L1

**Target/Specificity**

This BEST2 antibody is generated from rabbits immunized with a KLH conjugated synthetic peptide between 374-403 amino acids from the C-terminal region of human BEST2.

**Dilution**WB~~1:1000  
IHC-P~~1:50~100**Format**

Purified polyclonal antibody supplied in PBS with 0.09% (W/V) sodium azide. This antibody is purified through a protein A column, followed by peptide affinity purification.

**Storage**

Maintain refrigerated at 2-8°C for up to 2 weeks. For long term storage store at -20°C in small aliquots to prevent freeze-thaw cycles.

**Precautions**

BEST2 Antibody (C-term) is for research use only and not for use in diagnostic or therapeutic procedures.

**BEST2 Antibody (C-term) - Protein Information****Name** BEST2**Synonyms** VMD2L1

**Function** Forms calcium-sensitive chloride channels. Permeable to bicarbonate.

**Cellular Location**

Cell membrane; Multi-pass membrane protein.

**Tissue Location**

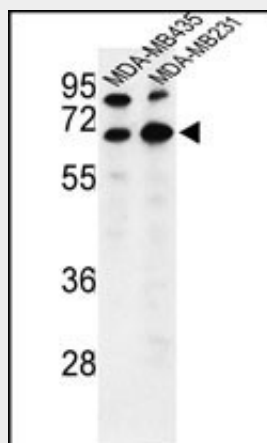
Mainly confined to the retinal pigment epithelium and colon.

**BEST2 Antibody (C-term) - Protocols**

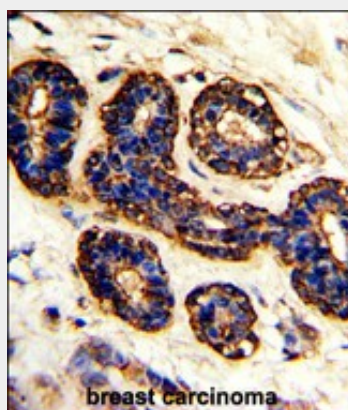
Provided below are standard protocols that you may find useful for product applications.

- [Western Blot](#)
- [Blocking Peptides](#)
- [Dot Blot](#)
- [Immunohistochemistry](#)
- [Immunofluorescence](#)
- [Immunoprecipitation](#)
- [Flow Cytometry](#)
- [Cell Culture](#)

**BEST2 Antibody (C-term) - Images**



Western blot analysis of BEST2 Antibody (C-term) (Cat. #AP9246b) in MDA-MB435,MDA-MB231 cell line lysates (35ug/lane).BEST2 (arrow) was detected using the purified Pab.



Formalin-fixed and paraffin-embedded human breast carcinoma with BEST2 Antibody (C-term),

which was peroxidase-conjugated to the secondary antibody, followed by DAB staining. This data demonstrates the use of this antibody for immunohistochemistry; clinical relevance has not been evaluated.

#### **BEST2 Antibody (C-term) - Background**

BEST2 is a member of the bestrophin gene family of anion channels. Bestrophin genes share a similar gene structure with highly conserved exon-intron boundaries, but with distinct 3' ends. Bestrophins are transmembrane proteins that contain a homologous region rich in aromatic residues, including an invariant arg-phe-pro motif.

#### **BEST2 Antibody (C-term) - References**

Zhang,Y., et.al, Mol. Vis. 16, 200-206 (2010)  
Marsey,L.L. et.al, J. Physiol. (Lond.) 587 (PT 10), 2211-2224 (2009)