

**XDH Antibody (N-term)**  
**Affinity Purified Rabbit Polyclonal Antibody (Pab)**  
**Catalog # AP9277A**

**Specification**

---

**XDH Antibody (N-term) - Product Information**

Application	WB, IHC-P, FC,E
Primary Accession	<a href="#">P47989</a>
Reactivity	Human, Mouse
Host	Rabbit
Clonality	Polyclonal
Isotype	Rabbit IgG
Calculated MW	146424
Antigen Region	206-234

**XDH Antibody (N-term) - Additional Information**

**Gene ID** 7498

**Other Names**

Xanthine dehydrogenase/oxidase, Xanthine dehydrogenase, XD, Xanthine oxidase, XO, Xanthine oxidoreductase, XOR, XDH, XDHA

**Target/Specificity**

This XDH antibody is generated from rabbits immunized with a KLH conjugated synthetic peptide between 206-234 amino acids from the N-terminal region of human XDH.

**Dilution**

WB~~1:1000  
IHC-P~~1:10~50  
FC~~1:10~50

**Format**

Purified polyclonal antibody supplied in PBS with 0.09% (W/V) sodium azide. This antibody is purified through a protein A column, followed by peptide affinity purification.

**Storage**

Maintain refrigerated at 2-8°C for up to 2 weeks. For long term storage store at -20°C in small aliquots to prevent freeze-thaw cycles.

**Precautions**

XDH Antibody (N-term) is for research use only and not for use in diagnostic or therapeutic procedures.

**XDH Antibody (N-term) - Protein Information**

**Name** XDH

## Synonyms XDHA

**Function** Key enzyme in purine degradation. Catalyzes the oxidation of hypoxanthine to xanthine. Catalyzes the oxidation of xanthine to uric acid. Contributes to the generation of reactive oxygen species. Has also low oxidase activity towards aldehydes (in vitro).

## Cellular Location

Cytoplasm. Peroxisome. Secreted

## Tissue Location

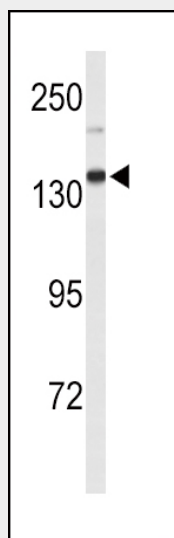
Detected in milk (at protein level). {ECO:0000269|Ref.12}

## XDH Antibody (N-term) - Protocols

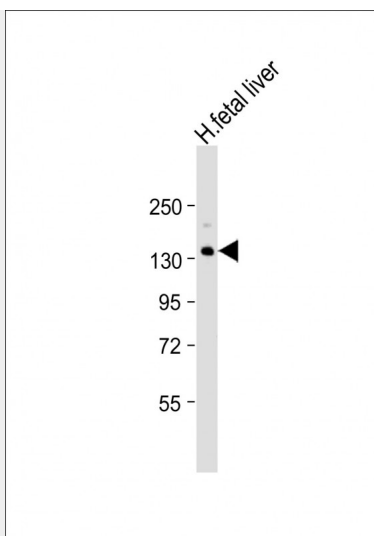
Provided below are standard protocols that you may find useful for product applications.

- [Western Blot](#)
- [Blocking Peptides](#)
- [Dot Blot](#)
- [Immunohistochemistry](#)
- [Immunofluorescence](#)
- [Immunoprecipitation](#)
- [Flow Cytometry](#)
- [Cell Culture](#)

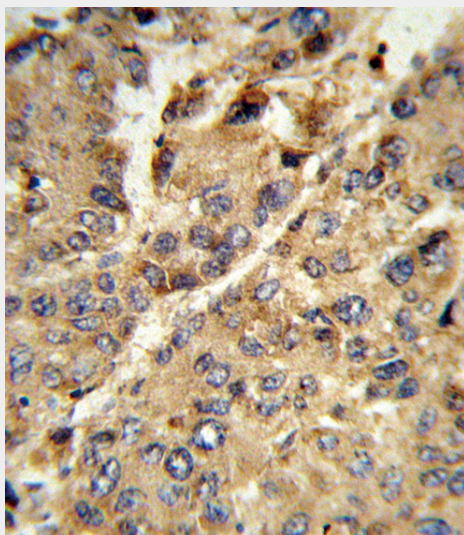
## XDH Antibody (N-term) - Images



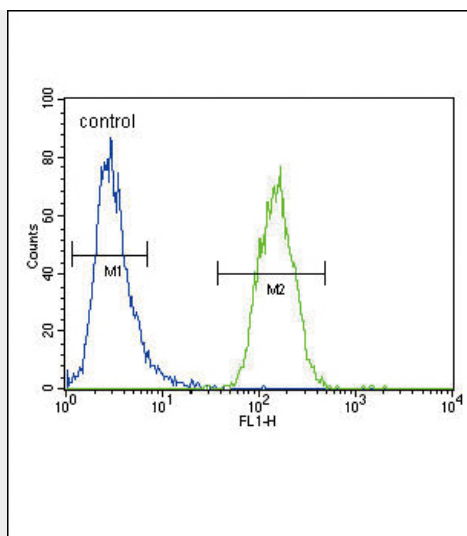
Western blot analysis of XDH Antibody (N-term) (Cat. #AP9277a) in mouse lung tissue lysates (35ug/lane). XDH (arrow) was detected using the purified Pab.



Anti-XDH Antibody (N-term) at 1:1000 dilution + human fetal liver lysate Lysates/proteins at 20  $\mu$ g per lane. Secondary Goat Anti-Rabbit IgG, (H+L), Peroxidase conjugated at 1/10000 dilution. Predicted band size : 146 kDa Blocking/Dilution buffer: 5% NFDM/TBST.



Formalin-fixed and paraffin-embedded human hepatocarcinoma reacted with XDH Antibody (N-term), which was peroxidase-conjugated to the secondary antibody, followed by DAB staining. This data demonstrates the use of this antibody for immunohistochemistry; clinical relevance has not been evaluated.



XDH Antibody (N-term) (Cat. #AP9277a) flow cytometric analysis of MDA-MB231 cells (right histogram) compared to a negative control cell (left histogram). FITC-conjugated goat-anti-rabbit secondary antibodies were used for the analysis.

#### **XDH Antibody (N-term) - Background**

XDH belongs to the group of molybdenum-containing hydroxylases involved in the oxidative metabolism of purines. The enzyme is a homodimer. This protein can be converted to xanthine oxidase by reversible sulfhydryl oxidation or by irreversible proteolytic modification. Defects in xanthine dehydrogenase cause xanthinuria, may contribute to adult respiratory stress syndrome, and may potentiate influenza infection through an oxygen metabolite-dependent mechanism.

#### **XDH Antibody (N-term) - References**

Ross, C.J., et.al., Nat. Genet. 41 (12), 1345-1349 (2009)  
Taibi, G., et.al., J. Cell. Biochem. 108 (3), 688-692 (2009)  
Spiekermann, S., et.al., Eur. Respir. J. 34 (1), 276 (2009)