

SMNDC1 Antibody (N-term)
Affinity Purified Rabbit Polyclonal Antibody (Pab)
Catalog # AP9372a

Specification

SMNDC1 Antibody (N-term) - Product Information

| | |
|-------------------|--|
| Application | WB, FC,E |
| Primary Accession | O75940 |
| Other Accession | Q4OQU6 , Q8BGT7 , Q3T045 |
| Reactivity | Human, Mouse |
| Predicted | Bovine, Rat |
| Host | Rabbit |
| Clonality | Polyclonal |
| Isotype | Rabbit IgG |
| Calculated MW | 26711 |
| Antigen Region | 11-41 |

SMNDC1 Antibody (N-term) - Additional Information

Gene ID 10285

Other Names

Survival of motor neuron-related-splicing factor 30, 30 kDa splicing factor SMNrp, SMN-related protein, Survival motor neuron domain-containing protein 1, SMNDC1, SMNR, SPF30

Target/Specificity

This SMNDC1 antibody is generated from rabbits immunized with a KLH conjugated synthetic peptide between 11-41 amino acids from the N-terminal region of human SMNDC1.

Dilution

WB~~1:1000
FC~~1:10~50

Format

Purified polyclonal antibody supplied in PBS with 0.09% (W/V) sodium azide. This antibody is purified through a protein A column, followed by peptide affinity purification.

Storage

Maintain refrigerated at 2-8°C for up to 2 weeks. For long term storage store at -20°C in small aliquots to prevent freeze-thaw cycles.

Precautions

SMNDC1 Antibody (N-term) is for research use only and not for use in diagnostic or therapeutic procedures.

SMNDC1 Antibody (N-term) - Protein Information

Name SMNDC1

Synonyms SMNR, SPF30

Function Involved in spliceosome assembly.

Cellular Location

Nucleus speckle. Nucleus, Cajal body. Note=Detected in nuclear speckles containing snRNP and in Cajal (coiled) bodies

Tissue Location

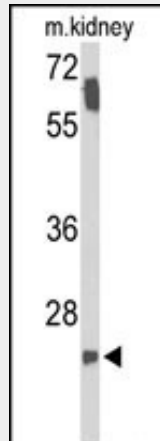
Detected at intermediate levels in skeletal muscle, and at low levels in heart and pancreas.

SMNDC1 Antibody (N-term) - Protocols

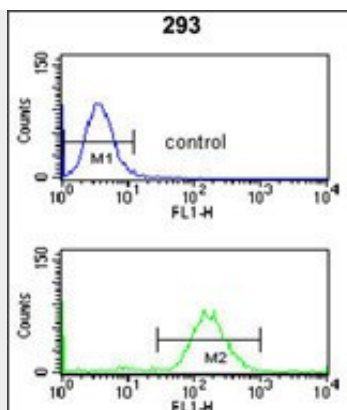
Provided below are standard protocols that you may find useful for product applications.

- [Western Blot](#)
- [Blocking Peptides](#)
- [Dot Blot](#)
- [Immunohistochemistry](#)
- [Immunofluorescence](#)
- [Immunoprecipitation](#)
- [Flow Cytometry](#)
- [Cell Culture](#)

SMNDC1 Antibody (N-term) - Images



Western blot analysis of SMNDC1 Antibody (N-term) (Cat. #AP9372a) in mouse kidney tissue lysates (35ug/lane). SMNDC1 (arrow) was detected using the purified Pab.



SMNDC1 Antibody (N-term) (Cat. #AP9372a) flow cytometry analysis of 293 cells (bottom histogram) compared to a negative control cell (top histogram). FITC-conjugated goat-anti-rabbit secondary antibodies were used for the analysis.

SMNDC1 Antibody (N-term) - Background

This protein is a paralog of SMN1 gene, which encodes the survival motor neuron protein, mutations in which are cause of autosomal recessive proximal spinal muscular atrophy. The protein encoded by this gene is a nuclear protein that has been identified as a constituent of the spliceosome complex. This protein is differentially expressed, with abundant levels in skeletal muscle, and may share similar cellular function as the SMN1 gene.

SMNDC1 Antibody (N-term) - References

- Little, J.T. J. Biol. Chem. 283 (13), 8145-8152 (2008)
- Ewing, R.M., Mol. Syst. Biol. 3, 89 (2007)
- Beausoleil, S.A., Nat. Biotechnol. 24 (10), 1285-1292 (2006)