

PLVAP Antibody (Center)
Affinity Purified Rabbit Polyclonal Antibody (Pab)
Catalog # AP9378c

Specification

PLVAP Antibody (Center) - Product Information

Application	WB, FC,E
Primary Accession	Q9BX97
Reactivity	Human
Host	Rabbit
Clonality	Polyclonal
Isotype	Rabbit IgG
Antigen Region	214-242

PLVAP Antibody (Center) - Additional Information

Gene ID 83483

Other Names

Plasmalemma vesicle-associated protein, Fenestrated endothelial-linked structure protein, Plasmalemma vesicle protein 1, PV-1, PLVAP, FELS, PV1

Target/Specificity

This PLVAP antibody is generated from rabbits immunized with a KLH conjugated synthetic peptide between 214-242 amino acids from the Central region of human PLVAP.

Dilution

WB~~1:1000
FC~~1:10~50

Format

Purified polyclonal antibody supplied in PBS with 0.09% (W/V) sodium azide. This antibody is purified through a protein A column, followed by peptide affinity purification.

Storage

Maintain refrigerated at 2-8°C for up to 2 weeks. For long term storage store at -20°C in small aliquots to prevent freeze-thaw cycles.

Precautions

PLVAP Antibody (Center) is for research use only and not for use in diagnostic or therapeutic procedures.

PLVAP Antibody (Center) - Protein Information

Name PLVAP

Synonyms FELS, PV1

Function Endothelial cell-specific membrane protein involved in the formation of the diaphragms that bridge endothelial fenestrae. It is also required for the formation of stomata of caveolae and transendothelial channels. Functions in microvascular permeability, endothelial fenestrae contributing to the passage of water and solutes and regulating transcellular versus paracellular flow in different organs. Plays a specific role in embryonic development.

Cellular Location

Cell membrane {ECO:0000250|UniProtKB:Q9WV78}; Single-pass type II membrane protein. Membrane, caveola {ECO:0000250|UniProtKB:Q9WV78}; Single-pass type II membrane protein. Cytoplasm, perinuclear region {ECO:0000250|UniProtKB:Q9WV78}. Note=Membrane-associated protein of caveolae. Found in fenestral and stomatal diaphragms in fenestrated endothelia and transendothelial channels. Also colocalized with CAV1 in perinuclear region. {ECO:0000250|UniProtKB:Q9WV78}

Tissue Location

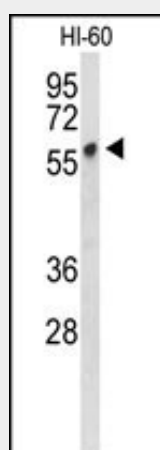
Expressed in lung, kidney, heart, aorta, placenta, muscle, pituitary gland, adrenals, mammary gland, bladder, lymph node, bone marrow, trachea, digestive tract, liver and tumor-associated endothelium.

PLVAP Antibody (Center) - Protocols

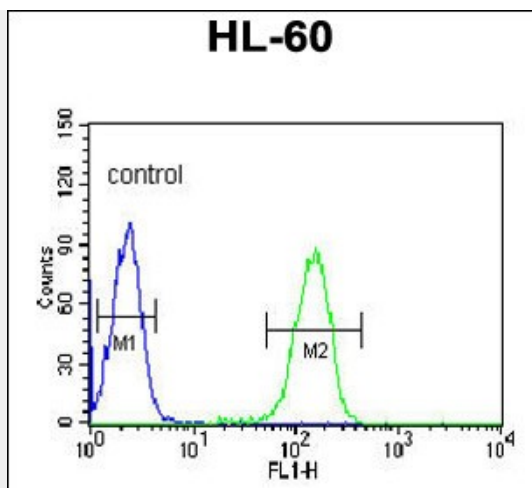
Provided below are standard protocols that you may find useful for product applications.

- [Western Blot](#)
- [Blocking Peptides](#)
- [Dot Blot](#)
- [Immunohistochemistry](#)
- [Immunofluorescence](#)
- [Immunoprecipitation](#)
- [Flow Cytometry](#)
- [Cell Culture](#)

PLVAP Antibody (Center) - Images



Western blot analysis of PLVAP Antibody (Center) (Cat. #AP9378c) in HL-60 cell line lysates (35ug/lane). PLVAP (arrow) was detected using the purified Pab.



PLVAP Antibody (Center) (Cat. #AP9378c) flow cytometric analysis of HL-60 cells (right histogram) compared to a negative control cell (left histogram). FITC-conjugated goat-anti-rabbit secondary antibodies were used for the analysis.

PLVAP Antibody (Center) - Background

PLVAP involved in the formation of stomatal and fenestral diaphragms of caveolae. This protein may function in microvascular permeability.

PLVAP Antibody (Center) - References

- Keuschnigg, J., et al. Blood 114(2):478-484(2009)
- Carson-Walter, E.B., et al. Clin. Cancer Res. 11(21):7643-7650(2005)
- Strickland, L.A., et al. J. Pathol. 206(4):466-475(2005)
- Stan, R.V., et al. Mol. Biol. Cell 15(8):3615-3630(2004)
- Hnasko, R., et al. J. Endocrinol. 175(3):649-661(2002)
- Stan, R.V., et al. Genomics 72(3):304-313(2001)
- Stan, R.V., et al. J. Cell Biol. 145(6):1189-1198(1999)