

OLFML3 Antibody (Center)
Purified Rabbit Polyclonal Antibody (Pab)
Catalog # AP9438c**Specification**

OLFML3 Antibody (Center) - Product Information

Application	WB,E
Primary Accession	Q9NRN5
Other Accession	B0BNI5 , Q8BK62
Reactivity	Human, Mouse
Predicted	Rat
Host	Rabbit
Clonality	Polyclonal
Isotype	Rabbit IgG
Calculated MW	46010
Antigen Region	107-134

OLFML3 Antibody (Center) - Additional Information**Gene ID** 56944**Other Names**

Olfactomedin-like protein 3, HNOEL-iso, hOLF44, OLFML3

Target/Specificity

This OLFML3 antibody is generated from rabbits immunized with a KLH conjugated synthetic peptide between 107-134 amino acids from the Central region of human OLFML3.

Dilution

WB~~1:1000

Format

Purified polyclonal antibody supplied in PBS with 0.09% (W/V) sodium azide. This antibody is prepared by Saturated Ammonium Sulfate (SAS) precipitation followed by dialysis against PBS.

Storage

Maintain refrigerated at 2-8°C for up to 2 weeks. For long term storage store at -20°C in small aliquots to prevent freeze-thaw cycles.

Precautions

OLFML3 Antibody (Center) is for research use only and not for use in diagnostic or therapeutic procedures.

OLFML3 Antibody (Center) - Protein Information**Name** OLFML3**Function** Secreted scaffold protein that plays an essential role in dorsoventral patterning during

early development. Stabilizes axial formation by restricting chordin (CHRD) activity on the dorsal side. Acts by facilitating the association between the tolloid proteases and their substrate chordin (CHRD), leading to enhance chordin (CHRD) degradation (By similarity). May have matrix-related function involved in placental and embryonic development, or play a similar role in other physiological processes.

Cellular Location

Secreted.

Tissue Location

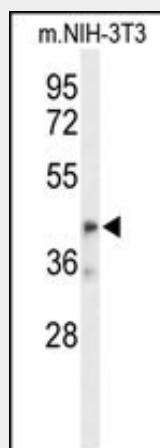
Abundant in placenta, moderate in liver and heart, whereas fairly weak in other tissues examined. On term placenta, mainly localized extracellularly surrounding the syncytiotrophoblastic cells and very rarely expressed in the maternal decidua layer

OLFML3 Antibody (Center) - Protocols

Provided below are standard protocols that you may find useful for product applications.

- [Western Blot](#)
- [Blocking Peptides](#)
- [Dot Blot](#)
- [Immunohistochemistry](#)
- [Immunofluorescence](#)
- [Immunoprecipitation](#)
- [Flow Cytometry](#)
- [Cell Culture](#)

OLFML3 Antibody (Center) - Images



Western blot analysis of OLFML3 Antibody (Center) (Cat. #AP9438c) in mouse NIH-3T3 cell line lysates (35ug/lane). OLFML3 (arrow) was detected using the purified Pab.

OLFML3 Antibody (Center) - References

Fautsch, M.P., et al. Exp. Eye Res. 82(6):1046-1052(2006)
Zeng, L.C., et al. FEBS Lett. 571 (1-3), 74-80 (2004)
Clark, H.F., et al. Genome Res. 13(10):2265-2270(2003)