

**GRB7 Antibody (Center)**  
**Affinity Purified Rabbit Polyclonal Antibody (Pab)**  
**Catalog # AP9469C**

**Specification**

---

**GRB7 Antibody (Center) - Product Information**

Application	WB,E
Primary Accession	<a href="#">Q14451</a>
Reactivity	Human
Host	Rabbit
Clonality	Polyclonal
Isotype	Rabbit IgG
Calculated MW	59681
Antigen Region	289-318

**GRB7 Antibody (Center) - Additional Information**

**Gene ID** 2886

**Other Names**

Growth factor receptor-bound protein 7, B47, Epidermal growth factor receptor GRB-7, GRB7 adapter protein, GRB7

**Target/Specificity**

This GRB7 antibody is generated from rabbits immunized with a KLH conjugated synthetic peptide between 289-318 amino acids from the Central region of human GRB7.

**Dilution**

WB~~1:1000

**Format**

Purified polyclonal antibody supplied in PBS with 0.09% (W/V) sodium azide. This antibody is purified through a protein A column, followed by peptide affinity purification.

**Storage**

Maintain refrigerated at 2-8°C for up to 2 weeks. For long term storage store at -20°C in small aliquots to prevent freeze-thaw cycles.

**Precautions**

GRB7 Antibody (Center) is for research use only and not for use in diagnostic or therapeutic procedures.

**GRB7 Antibody (Center) - Protein Information**

**Name** GRB7

**Function** Adapter protein that interacts with the cytoplasmic domain of numerous receptor kinases and modulates down-stream signaling. Promotes activation of down-stream protein

kinases, including STAT3, AKT1, MAPK1 and/or MAPK3. Promotes activation of HRAS. Plays a role in signal transduction in response to EGF. Plays a role in the regulation of cell proliferation and cell migration. Plays a role in the assembly and stability of RNA stress granules. Binds to the 5'UTR of target mRNA molecules and represses translation of target mRNA species, when not phosphorylated. Phosphorylation impairs RNA binding and promotes stress granule disassembly during recovery after cellular stress (By similarity).

#### **Cellular Location**

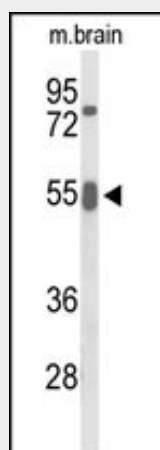
Cytoplasm. Cell junction, focal adhesion. Cell membrane; Peripheral membrane protein; Cytoplasmic side. Cytoplasmic granule {ECO:0000250|UniProtKB:Q03160}. Cell projection. Note=Predominantly cytoplasmic. Detected in stress granules, where mRNA is stored under stress conditions {ECO:0000250|UniProtKB:Q03160}

### **GRB7 Antibody (Center) - Protocols**

Provided below are standard protocols that you may find useful for product applications.

- [Western Blot](#)
- [Blocking Peptides](#)
- [Dot Blot](#)
- [Immunohistochemistry](#)
- [Immunofluorescence](#)
- [Immunoprecipitation](#)
- [Flow Cytometry](#)
- [Cell Culture](#)

### **GRB7 Antibody (Center) - Images**



Western blot analysis of GRB7 Antibody (Center) (Cat. #AP9469c) in mouse brain tissue lysates (35ug/lane). GRB7 (arrow) was detected using the purified Pab.

### **GRB7 Antibody (Center) - Background**

GRB7 belongs to a small family of adapter proteins that are known to interact with a number of receptor tyrosine kinases and signaling molecules. This gene encodes a growth factor receptor-binding protein that interacts with epidermal growth factor receptor (EGFR) and ephrin receptors. The protein plays a role in the integrin signaling pathway and cell migration by binding with focal adhesion kinase (FAK).

### **GRB7 Antibody (Center) - References**

?Depetris, R.S., et al. Nat. Struct. Mol. Biol. 16(8):833-839(2009)  
?Chu, P.Y., et al. J. Biol. Chem. 284(30):20215-20226(2009)  
?Mavaddat, N., et al. Cancer Epidemiol. Biomarkers Prev. 18(1):255-259(2009)  
?Bai, T., et al. Carcinogenesis 29(3):473-479(2008)  
?Spuches, A.M., et al. J. Mol. Recognit. 20(4):245-252(2007)