

**TAT Antibody (Center)**  
**Affinity Purified Rabbit Polyclonal Antibody (Pab)**  
**Catalog # AP9533C****Specification**

---

**TAT Antibody (Center) - Product Information**

Application	WB, IHC-P, FC,E
Primary Accession	<a href="#">P17735</a>
Other Accession	<a href="#">P04694</a> , <a href="#">Q8QZR1</a> , <a href="#">Q58CZ9</a> , <a href="#">NP_000344</a>
Reactivity	Human, Mouse
Predicted	Bovine, Rat
Host	Rabbit
Clonality	Polyclonal
Isotype	Rabbit IgG
Calculated MW	50399
Antigen Region	279-306

**TAT Antibody (Center) - Additional Information****Gene ID** 6898**Other Names**

Tyrosine aminotransferase, TAT, L-tyrosine:2-oxoglutarate aminotransferase, TAT

**Target/Specificity**

This TAT antibody is generated from rabbits immunized with a KLH conjugated synthetic peptide between 279-306 amino acids from the Central region of human TAT.

**Dilution**

WB~~1:2000  
IHC-P~~1:10~50  
FC~~1:10~50

**Format**

Purified polyclonal antibody supplied in PBS with 0.09% (W/V) sodium azide. This antibody is purified through a protein A column, followed by peptide affinity purification.

**Storage**

Maintain refrigerated at 2-8°C for up to 2 weeks. For long term storage store at -20°C in small aliquots to prevent freeze-thaw cycles.

**Precautions**

TAT Antibody (Center) is for research use only and not for use in diagnostic or therapeutic procedures.

**TAT Antibody (Center) - Protein Information****Name** TAT

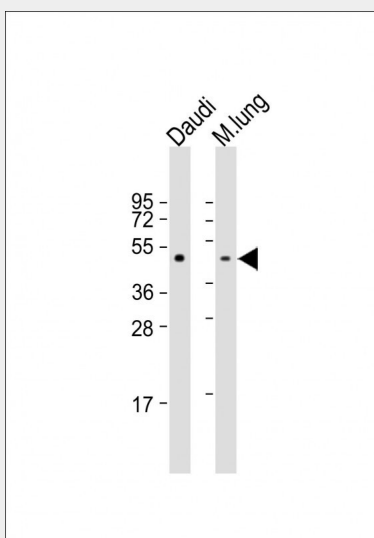
**Function** Transaminase involved in tyrosine breakdown. Converts tyrosine to p-hydroxyphenylpyruvate. Can catalyze the reverse reaction, using glutamic acid, with 2-oxoglutarate as cosubstrate (in vitro). Has much lower affinity and transaminase activity towards phenylalanine.

### TAT Antibody (Center) - Protocols

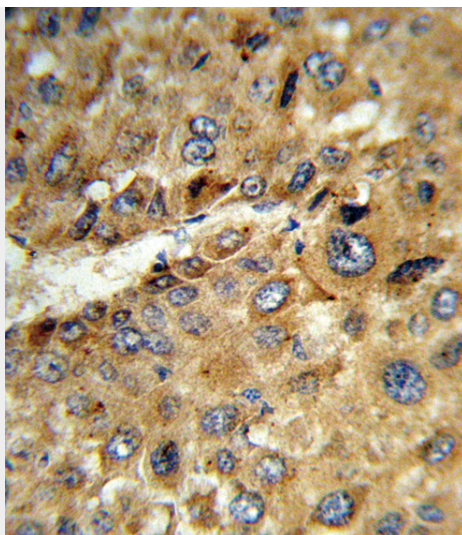
Provided below are standard protocols that you may find useful for product applications.

- [Western Blot](#)
- [Blocking Peptides](#)
- [Dot Blot](#)
- [Immunohistochemistry](#)
- [Immunofluorescence](#)
- [Immunoprecipitation](#)
- [Flow Cytometry](#)
- [Cell Culture](#)

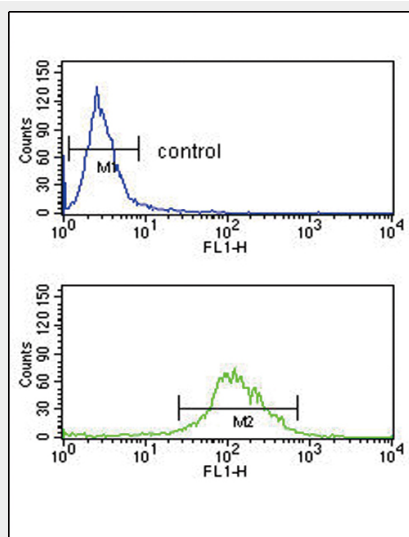
### TAT Antibody (Center) - Images



All lanes : Anti-TAT Antibody (Center) at 1:2000 dilution Lane 1: Daudi whole cell lysate Lane 2: Mouse lung whole tissue lysate Lysates/proteins at 20 µg per lane. Secondary Goat Anti-Rabbit IgG, (H+L), Peroxidase conjugated at 1/10000 dilution. Predicted band size : 50 kDa Blocking/Dilution buffer: 5% NFDM/TBST.



Formalin-fixed and paraffin-embedded human hepatocarcinoma reacted with TAT Antibody (Center), which was peroxidase-conjugated to the secondary antibody, followed by DAB staining. This data demonstrates the use of this antibody for immunohistochemistry; clinical relevance has not been evaluated.



TAT Antibody (Center) (Cat. #AP9533c) flow cytometry analysis of K562 cells (bottom histogram) compared to a negative control cell (top histogram). FITC-conjugated goat-anti-rabbit secondary antibodies were used for the analysis.

### **TAT Antibody (Center) - Background**

TAT is a mitochondrial protein tyrosine aminotransferase which is present in the liver and catalyzes the conversion of L-tyrosine into p-hydroxyphenylpyruvate.

### **TAT Antibody (Center) - References**

- Liu, S., et al. Biosci. Rep. 29(2):103-109(2009)
- Pasternack, S.M., et al. Br. J. Dermatol. 160(3):704-706(2009)
- Maydan, G., et al. J. Inherit. Metab. Dis. 29(5):620-626(2006)
- Charfeddine, C., et al. Mol. Genet. Metab. 88(2):184-191(2006)
- Baharvand, H., et al. Int. J. Dev. Biol. 50(7):645-652(2006)
- Natt, E., et al. Proc. Natl. Acad. Sci. U.S.A. 89(19):9297-9301(1992)