

**LUC7L2 Antibody (C-term)**  
**Affinity Purified Rabbit Polyclonal Antibody (Pab)**  
**Catalog # AP9549a****Specification**

---

**LUC7L2 Antibody (C-term) - Product Information**

Application	WB, IHC-P, FC,E
Primary Accession	<a href="#">O9Y383</a>
Other Accession	<a href="#">Q7TNC4</a>
Reactivity	Human
Predicted	Mouse
Host	Rabbit
Clonality	Polyclonal
Isotype	Rabbit IgG
Calculated MW	46514
Antigen Region	341-369

**LUC7L2 Antibody (C-term) - Additional Information****Gene ID** 51631**Other Names**

Putative RNA-binding protein Luc7-like 2, LUC7L2

**Target/Specificity**

This LUC7L2 antibody is generated from rabbits immunized with a KLH conjugated synthetic peptide between 341-369 amino acids from the C-terminal region of human LUC7L2.

**Dilution**

WB~~1:1000  
IHC-P~~1:50~100  
FC~~1:10~50

**Format**

Purified polyclonal antibody supplied in PBS with 0.09% (W/V) sodium azide. This antibody is purified through a protein A column, followed by peptide affinity purification.

**Storage**

Maintain refrigerated at 2-8°C for up to 2 weeks. For long term storage store at -20°C in small aliquots to prevent freeze-thaw cycles.

**Precautions**

LUC7L2 Antibody (C-term) is for research use only and not for use in diagnostic or therapeutic procedures.

**LUC7L2 Antibody (C-term) - Protein Information****Name** LUC7L2

**Function** May bind to RNA via its Arg/Ser-rich domain.

**Cellular Location**

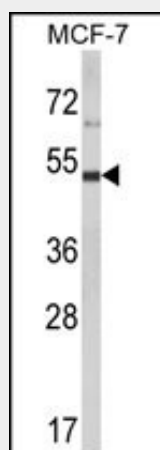
Nucleus speckle {ECO:0000250|UniProtKB:Q7TNC4}. Nucleus, nucleoplasm {ECO:0000250|UniProtKB:Q7TNC4}. Note=Colocalizes with SCNM1 and SNRNP70 in nuclear speckles {ECO:0000250|UniProtKB:Q7TNC4}

**LUC7L2 Antibody (C-term) - Protocols**

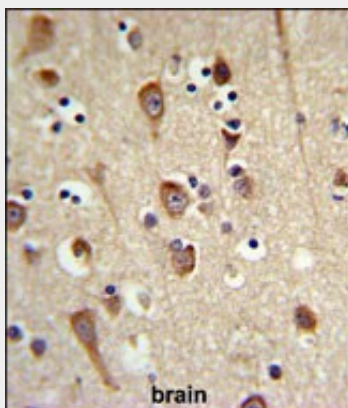
Provided below are standard protocols that you may find useful for product applications.

- [Western Blot](#)
- [Blocking Peptides](#)
- [Dot Blot](#)
- [Immunohistochemistry](#)
- [Immunofluorescence](#)
- [Immunoprecipitation](#)
- [Flow Cytometry](#)
- [Cell Culture](#)

**LUC7L2 Antibody (C-term) - Images**

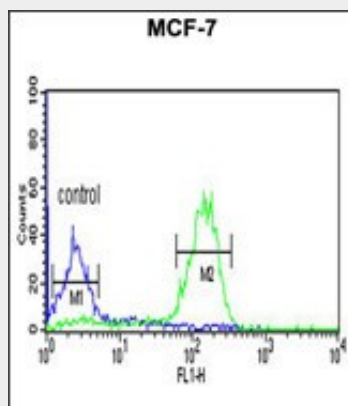


Western blot analysis of LUC7L2 Antibody (C-term) (Cat. #AP9549a) in MCF-7 cell line lysates (35ug/lane). LUC7L2 (arrow) was detected using the purified Pab.



LUC7L2 Antibody (C-term) (Cat. #AP9549a) IHC analysis in formalin fixed and paraffin embedded

brain tissue followed by peroxidase conjugation of the secondary antibody and DAB staining. This data demonstrates the use of the LUC7L2 Antibody (C-term) for immunohistochemistry. Clinical relevance has not been evaluated.



LUC7L2 Antibody (C-term) (Cat. #AP9549a) flow cytometric analysis of MCF-7 cells (right histogram) compared to a negative control cell (left histogram). FITC-conjugated goat-anti-rabbit secondary antibodies were used for the analysis.

#### **LUC7L2 Antibody (C-term) - Background**

LUC7L2 may bind to RNA via its Arg/Ser-rich domain.

#### **LUC7L2 Antibody (C-term) - References**

- ?Webby, C.J., et al. Science 325(5936):90-93(2009)
- ?Howell, V.M., et al. Hum. Mol. Genet. 16(20):2506-2516(2007)
- ?Sugiyama, N., et al. Mol. Cell Proteomics 6(6):1103-1109(2007)
- ?Matsuoka, S., et al. Science 316(5828):1160-1166(2007)
- ?Puig, O., et al. Nucleic Acids Res. 35(17):5874-5885(2007)
- ?Ewing, R.M., et al. Mol. Syst. Biol. 3, 89 (2007) :